

Espresso Capsule Machine

INSTRUCTION MANUAL



! Please read this Instruction Manual and the safety instructions before operating the appliance!

Safety precautions
Keep this instruction manual

SOS In the event of an emergency: Immediately remove plug from power socket.

This product has been designed for domestic use only. The manufacturer accepts no responsibility and the guarantee will not apply in the event of any commercial use, inappropriate use or failure to comply with the instructions. Remove plug from socket if not in use for long periods.

Check that the voltage quoted on the rating plate is the same as your voltage. Connect the appliance to earthed power sockets only. An improper connection voids warranty.

Before cleaning, unplug the appliance and let it cool down. Never clean with wet cloth or immerse plug, cord or appliance in any liquid.

-- This appliance can be used by children aged from 8 years and above if they have been given supervision or instruction concerning use of the appliance in a safe way and if they understand the hazards involved. Cleaning and user maintenance shall not be made by children unless they are aged from 8 years and above and supervised. Keep the appliance and its cord out of reach of children aged less than 8 years. -- Appliances can be used by persons with reduced physical, sensory or mental capabilities or lack of experience and knowledge if they have been given supervision or instruction concerning use of the appliance in a safe way and if they understand the hazards involved. -- Children shall not play with the appliance. The heating element surface is subject to residual heat after use.

This appliance may become a safety hazard if these instructions and safety precautions are ignored

Always close the lever, never lift it while the machine is in operation. Do not insert fingers into capsule compartment and capsule shaft, as there is a danger of injury. Do not use the appliance without the drip tray and drip grid. Keep the appliance/cord out of reach of children. Do not fill the water tank with hot water.

Do not place the power cord near hot parts or sharp objects, etc.. Never touch the cable with wet hands. Do not unplug by pulling the cord. If it is damaged, do not use the appliance. In order to avoid any hazards, only allow the seller to repair the appliance and replace the power cord.

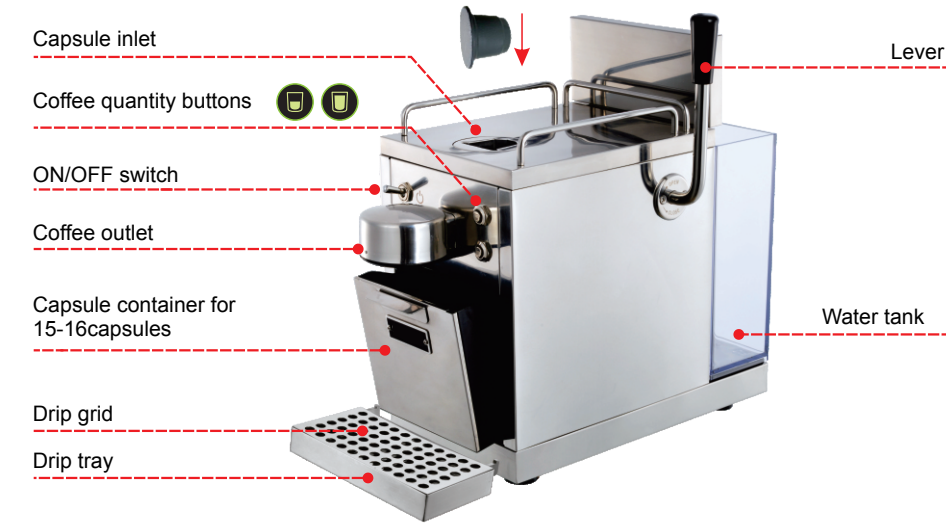
Do not open the appliance or insert anything into the openings. All actions other than normal use, cleaning and care must be performed by the seller.

Descaling: 8c) Do not lift lever during descaling process. 8d) Rinse the water tank and clean the machine to avoid any residual descaling agent.

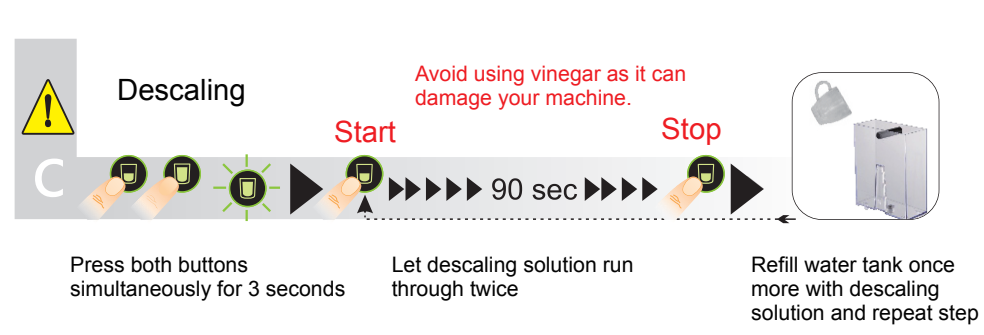
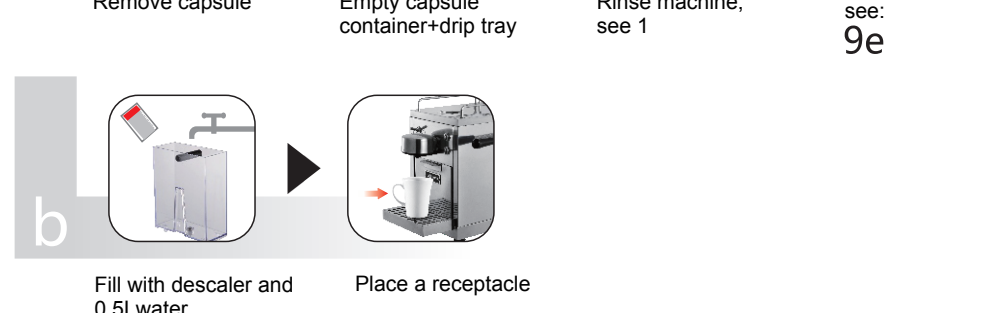
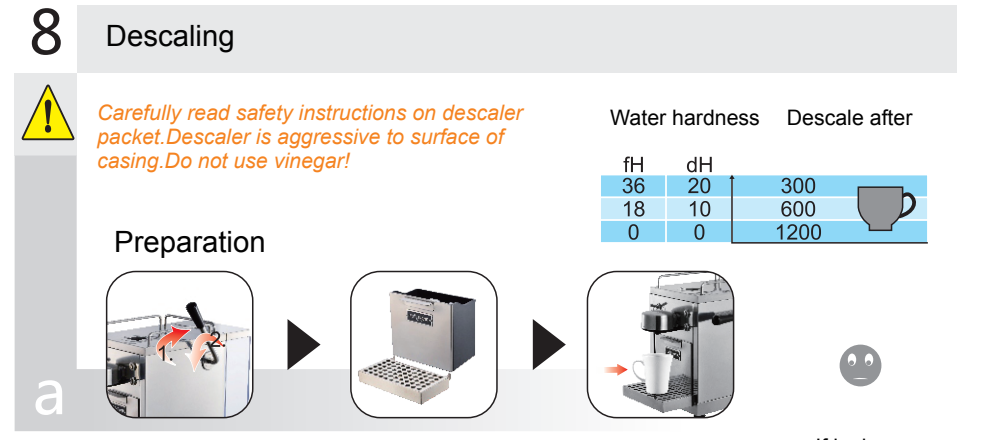
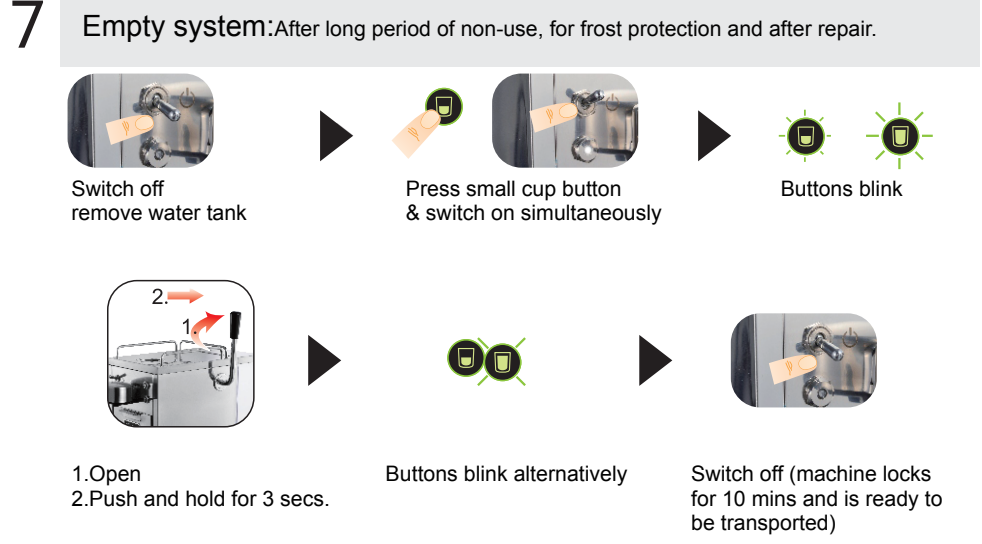
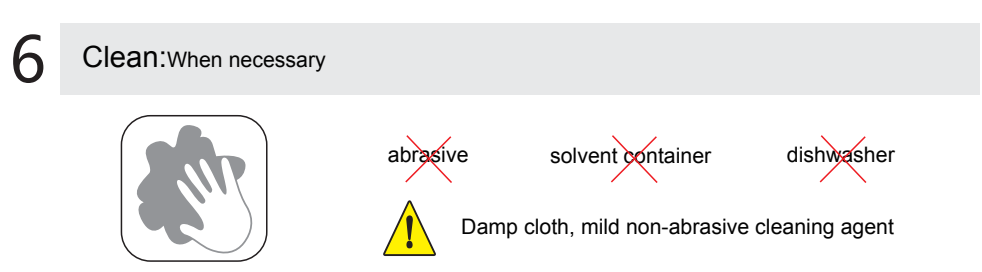
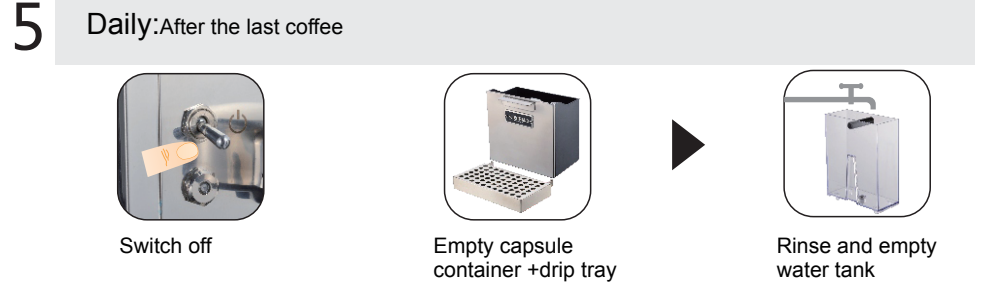
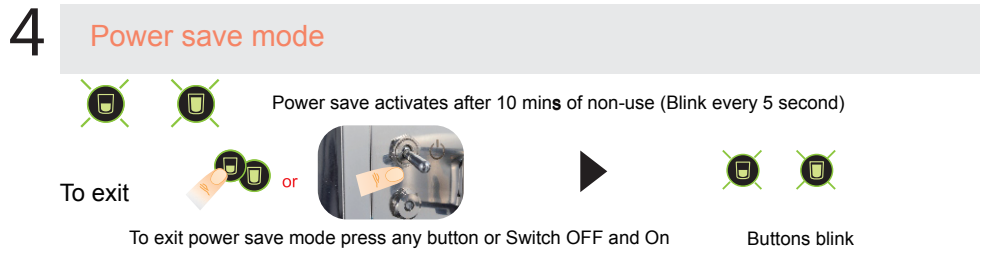
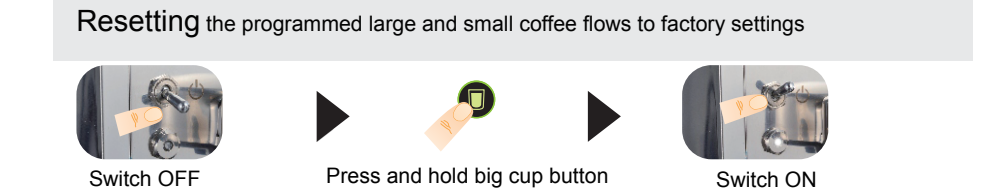
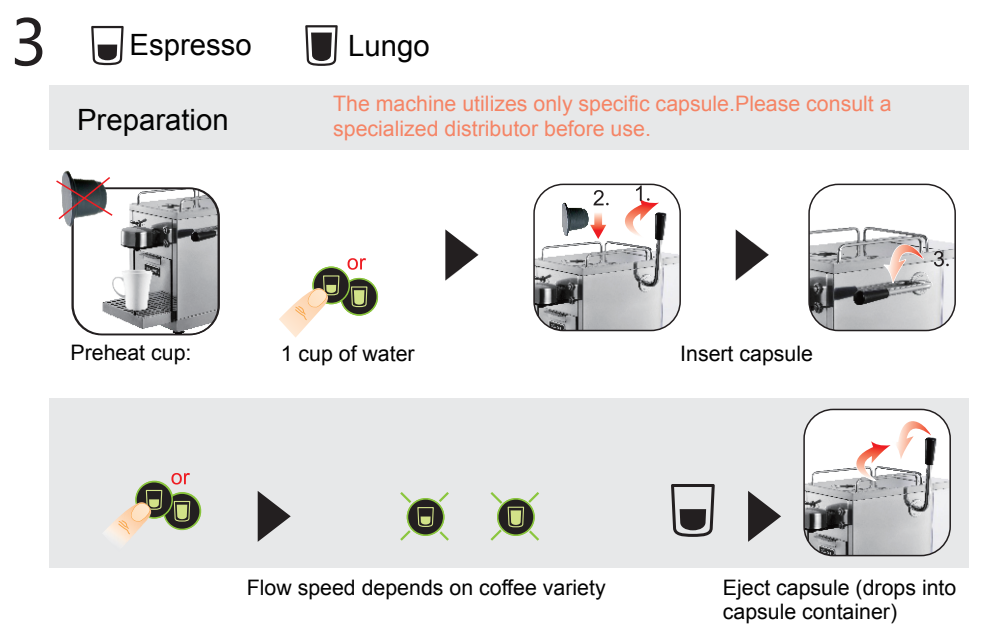
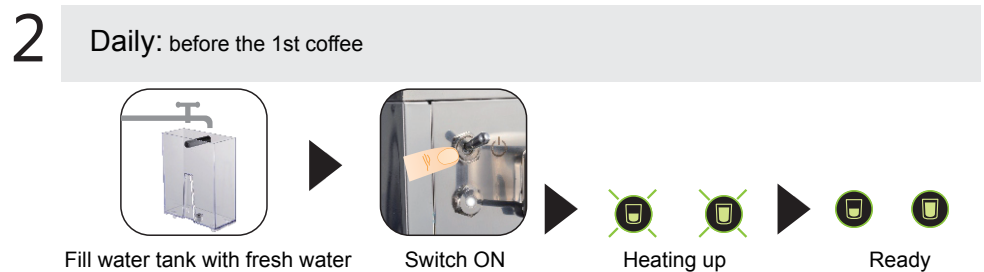
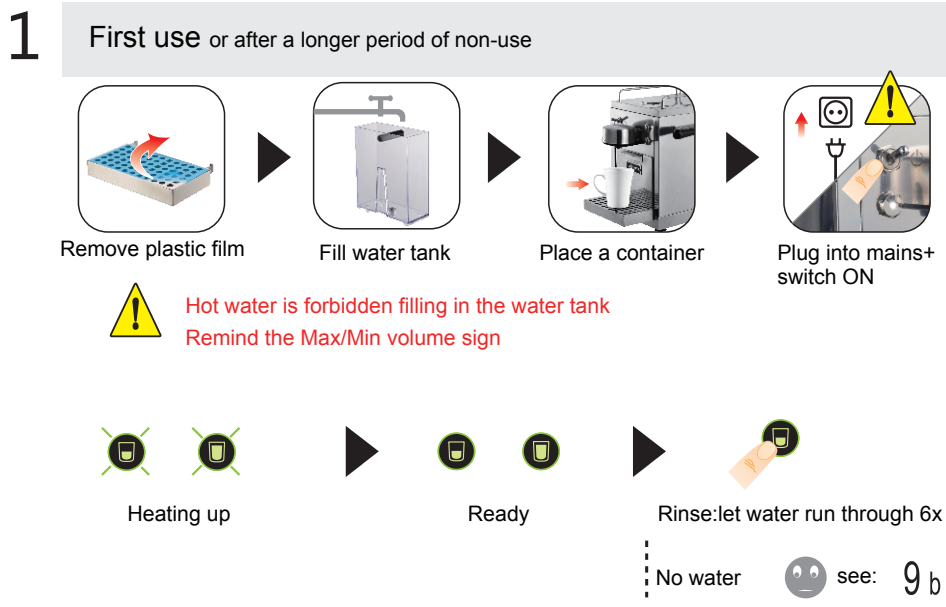
Do not use the machine if it is not in perfect working order or if there is evidence of damage. In such cases inform the seller.

Place on a flat, stable and heat-resistant work surface away from water splashes and any heat sources.

Environment protection: your appliance contains valuable materials which can be recovered or recycled. Leave it at a waste collection point. Packaging is made of recyclable materials



- Flashing slow (1*time/sec): preheating, coffee, rinse
- Flashing very slow: (5*sec/time): Power save mode
- Bright: ready
- Flashing (2*time/sec): emptying the system
- Flashing fast (3*time/sec): boiler too hot, switch OFF to rest



9 Troubleshooting

- a** No light: The machine has switched off automatically; press ON/OFF button. Check the mains: plug, voltage, fuse.
- b** No coffee, no water: Check the water tank if empty, full with potable water. Descal if necessary. Lift the lever. Press one coffee button and wait until water comes out.
- c** Coffee is not hot enough: Preheat cup. Descal the machine if necessary.
- d** The lever cannot be closed completely: Empty the capsule container/Check that there is not a capsule blocked inside the machine.
- e** Leakage or unusual coffee flow: Check that the water tank is in position.
- f** Lights flash irregularly: Check the water tank if empty, full with potable water. Replace a new capsule. Exit descaling procedure (see paragraph on descaling). Power save activates after 10 mins of non-use.
- g** water comes out, No coffee: Replace a new capsule.

Specifications

Please choose the right voltage as written on the bottom label of the appliance and use the power supply accordingly.

Symbol	Description	Value
~	See the data plate on the base of the machine	p max. 20 bar
⌚	5°C...40°C	1.2L
📏	18.6cm x 25.9cm x 33.6cm	~4.1 kg

Please search the user manual information at www.cino.cn