



USER MANUAL



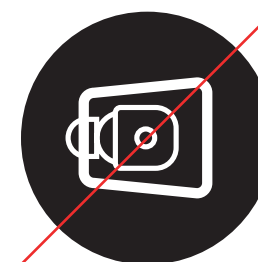
Important Safeguards

When using electrical appliances, basic safety precautions should always be followed including the following:

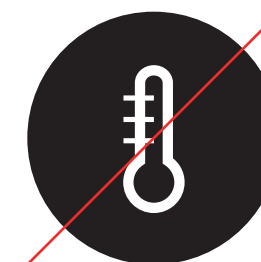
- a. Read all instructions.
- b. To protect against risk of electrical shock do not put the machine in water or other liquid.
- c. This appliance is not intended for use by persons (including children) with reduced physical, sensory, or mental capabilities, or lack of experience and knowledge, unless they are closely supervised and instructed concerning use of the appliance by a person responsible for their safety. Close supervision is necessary when any appliance is used by or near children. Children should be supervised to ensure that they do not play with the appliance.

Exception: This appliance is not intended for use by children or by persons with reduced physical, sensory, or mental capabilities, or lack of experience and knowledge. Close supervision is necessary when any appliance is used near children. Children should be supervised to ensure that they do not play with the appliance.

- d. Turn the appliance OFF, then unplug from the outlet when not in use, before assembling or disassembling parts and before cleaning. To unplug, grasp the plug and pull from the outlet. Never pull from the power cord. Permanently Installed – Make sure appliance is OFF when not in use, before putting on or taking off parts, and before cleaning.
- e. Do not operate any appliance with a damaged cord or plug or after the appliance malfunctions, or is dropped or damaged in any manner. Contact the manufacturer at their customer service email address: support-us@tooa.com for information on examination, repair, or adjustment.
- f. The use of attachments not recommended or sold by the manufacturer may cause fire, electric shock or injury.
- g. Do not use outdoors.
- h. Portable – Do not let cord hang over edge of table or counter.
- i. SAVE THESE INSTRUCTIONS



Do not lay the machine on one side or turn it upside down.

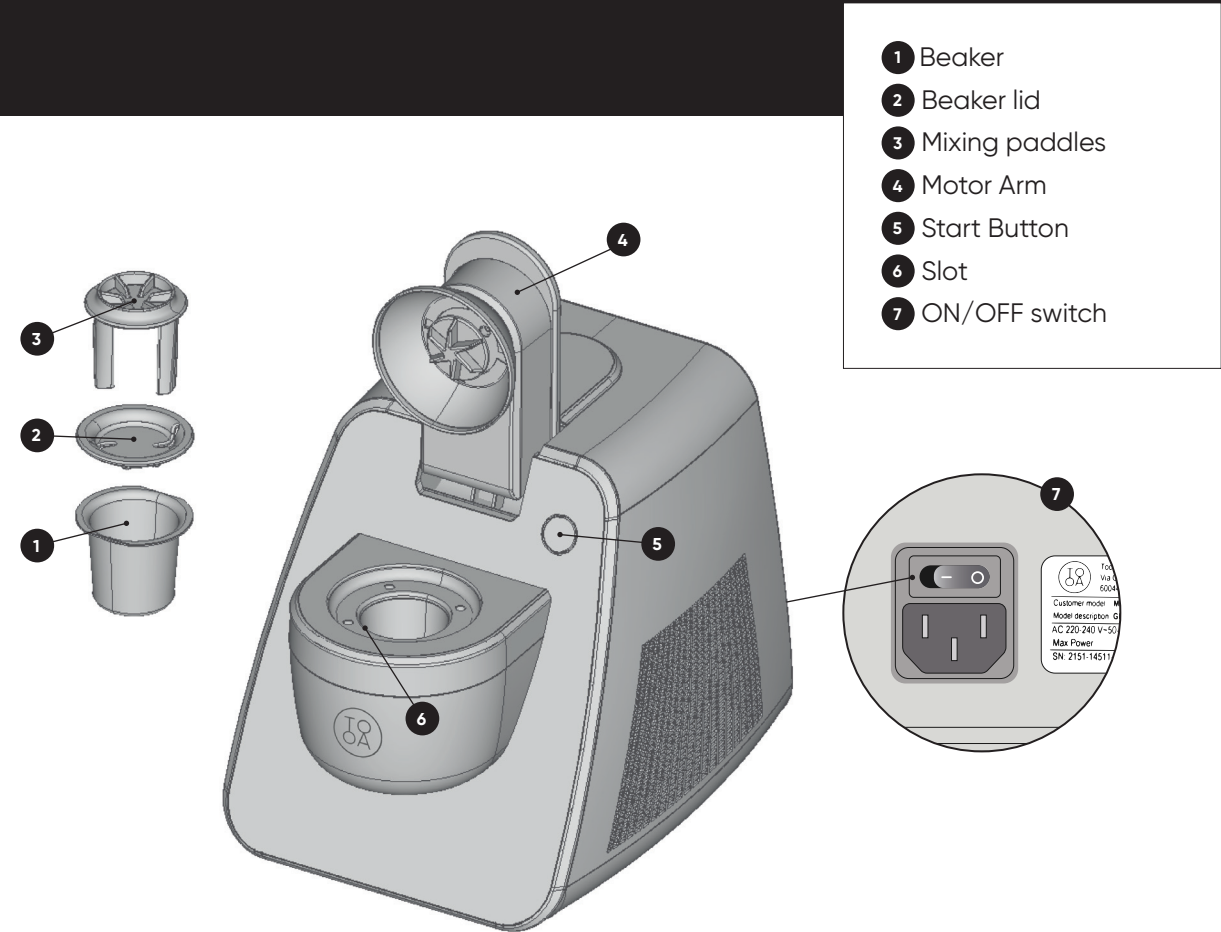


The machine is climate class N and can operate up to 32°C room temperature.

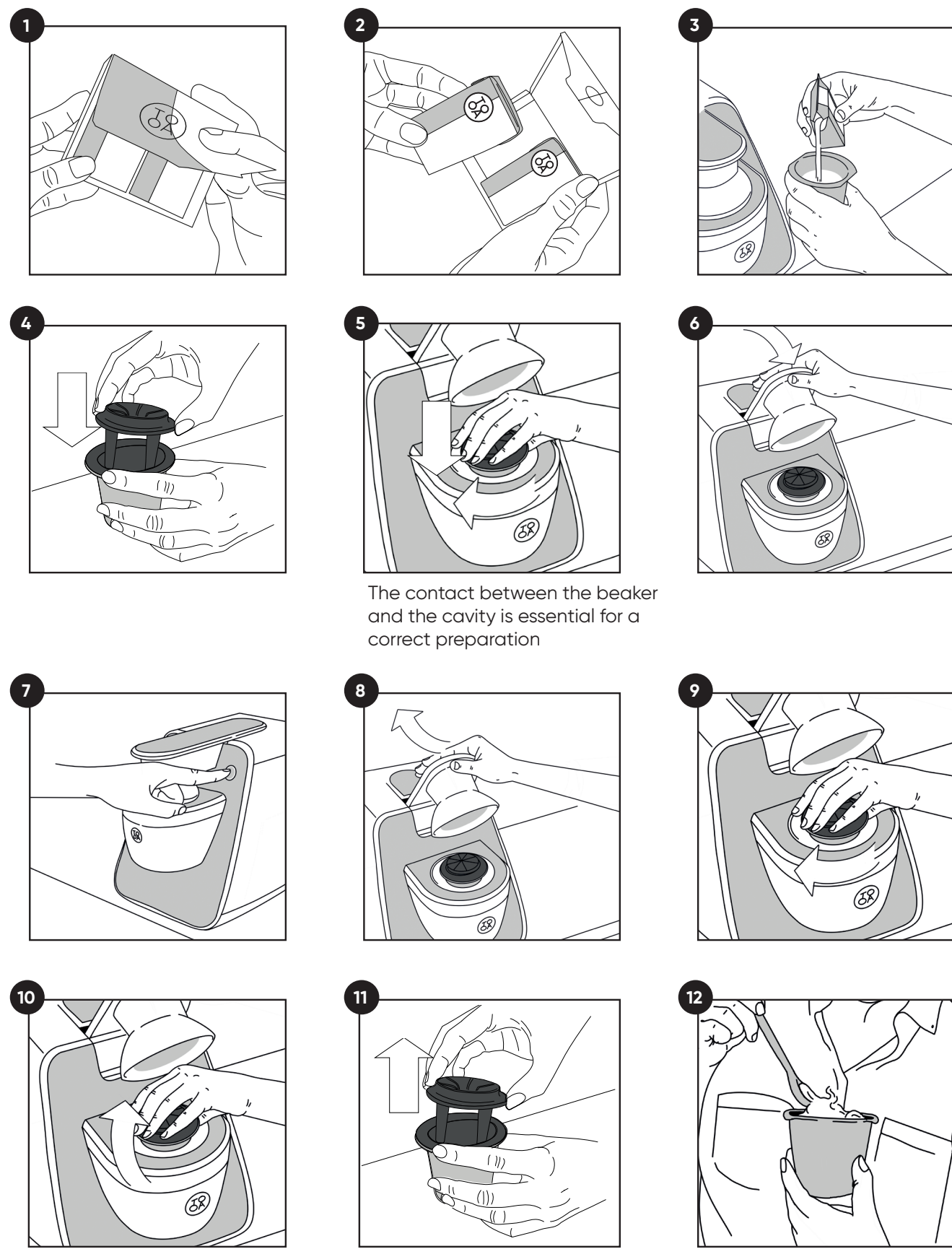


Leave at least 20 cm of space around the machine for free air circulation and better performance. Do not cover the ventilation grids.

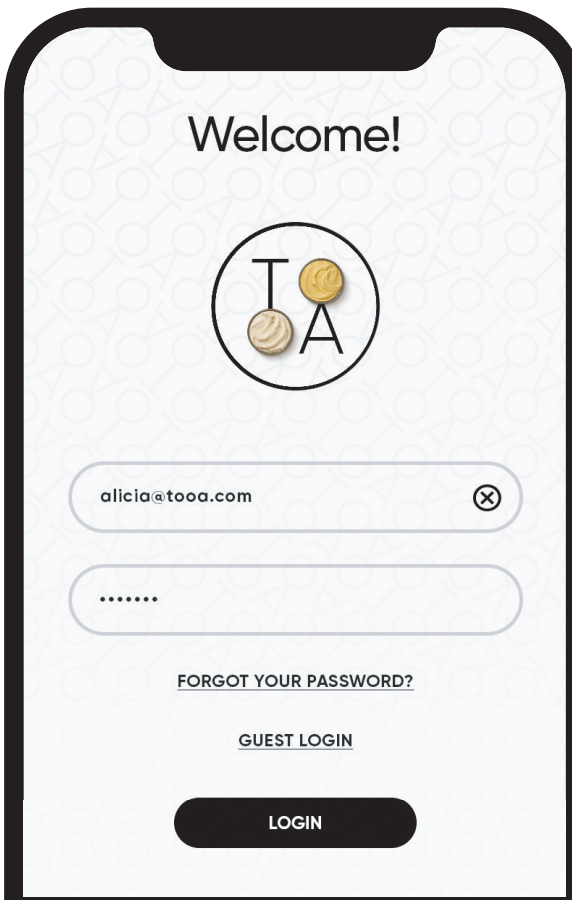
Machine Overview



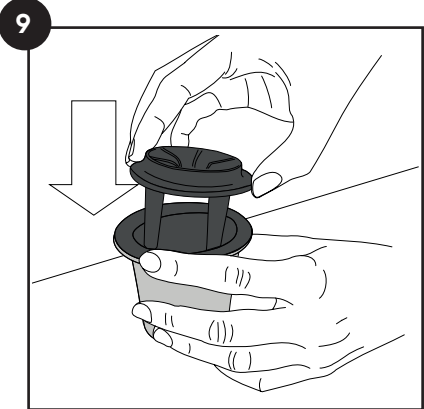
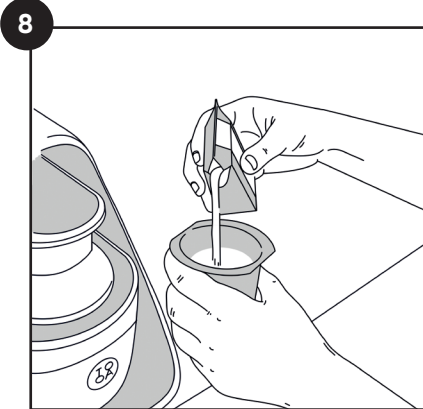
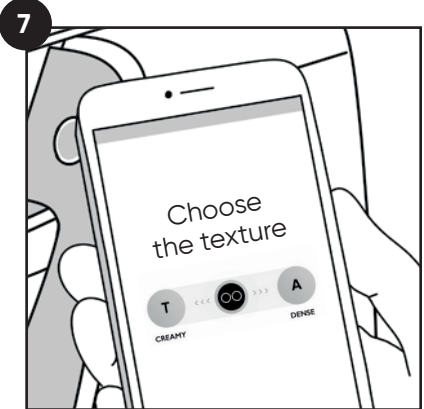
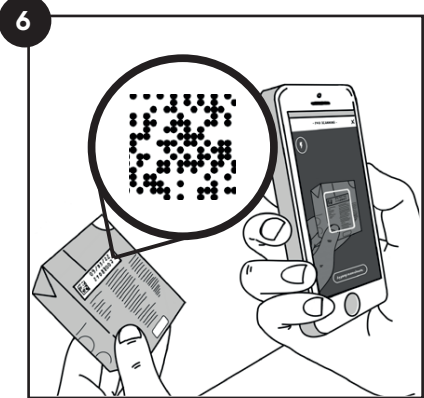
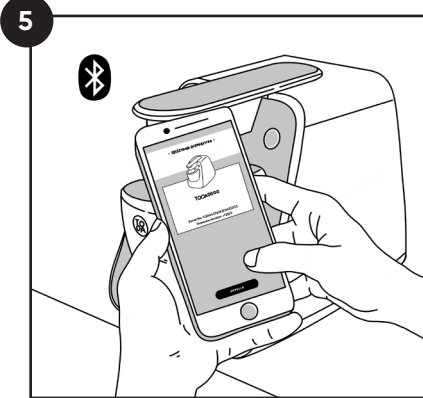
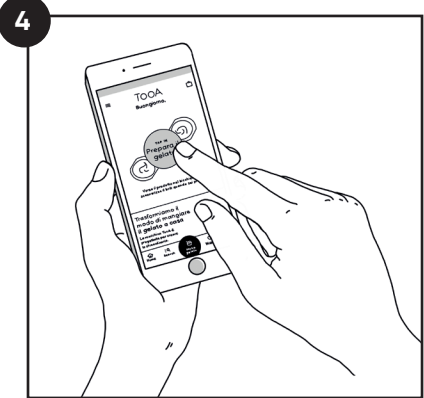
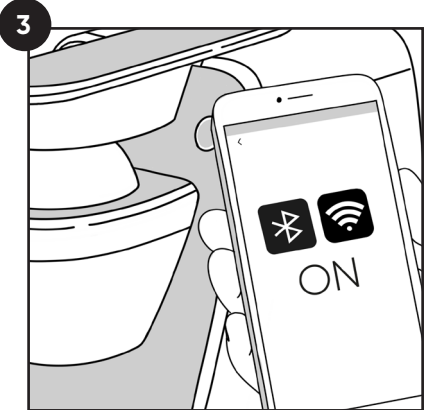
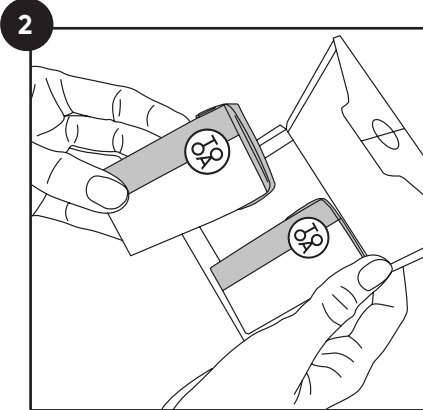
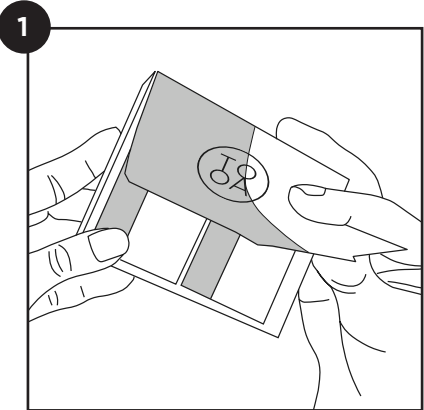
Instructions



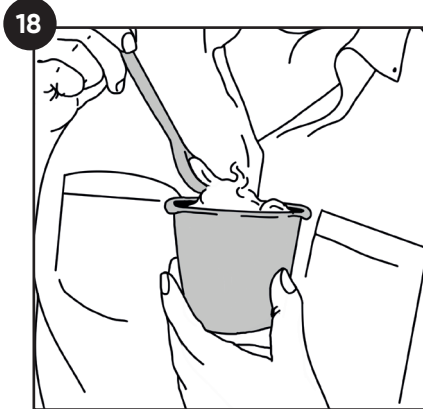
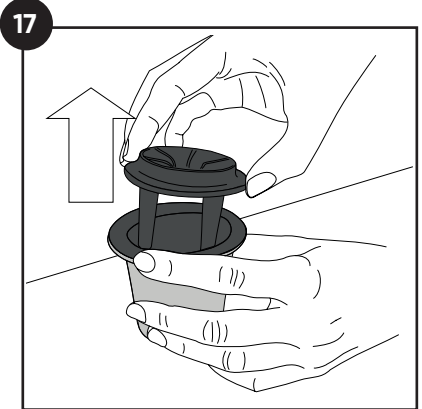
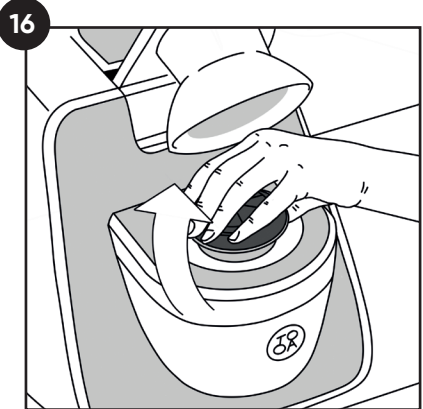
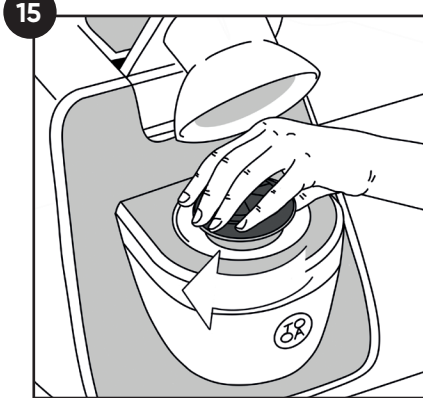
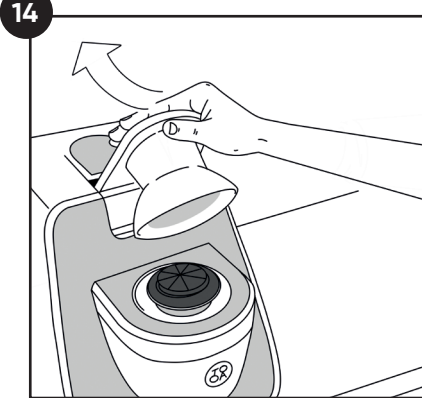
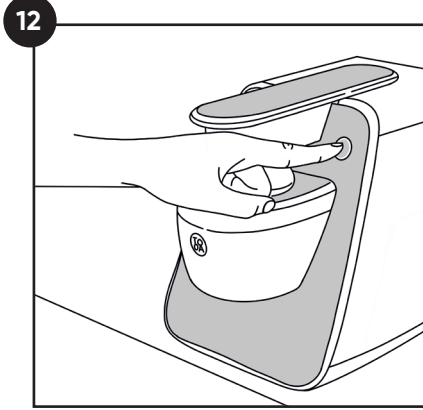
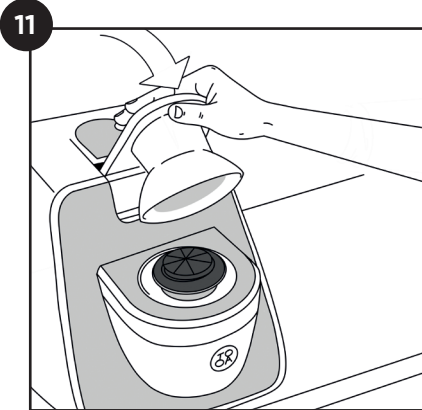
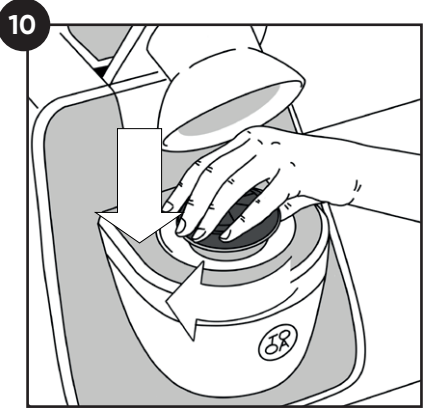
Before using the machine download TooA App by scanning the following QR code



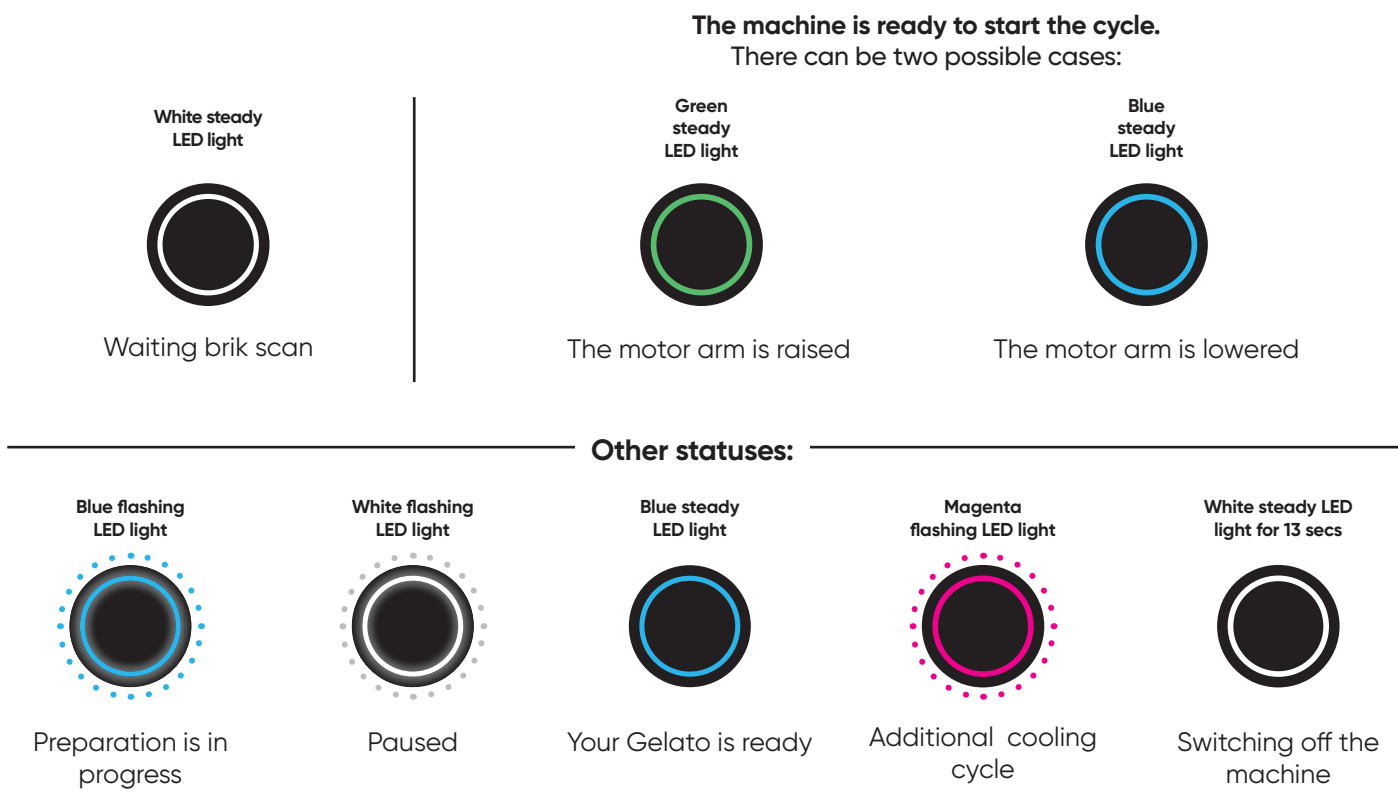
App Operating



The contact between the beaker and the cavity is essential for a correct preparation



Start button colours



Cleaning and maintenance

Before each cleaning operation, switch off the machine by switching the power button to OFF at the back of the machine or by disconnecting the plug from the power socket.

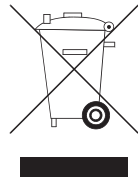
Before first use and after each preparation, wash the beaker and the mixing paddles thoroughly using water and non-aggressive dishwashing detergents. **You can also wash them at low temperatures in the dishwasher.**

Use a damp cloth for the external parts of the machine without ever laying it on one side or turning it upside down.

Make sure not to scratch the surface of the beaker, as damage to the inner or outer coating can impair its functionality.



Environment protection first!



Your appliance contains valuable materials which can be recovered or recycled. Leave it at a collection point.

Useful tips

The additional cooling cycle can be activated in two ways:

- 1

Directly from the machine, pressing the start button.
- 2

From the App, following the instructions on your smartphone. The machine will start automatically.

Please Note: the additional cooling time is only available once for each preparation cycle. Once the cycle is complete, the QR code on the brik will no longer enable the machine for another cycle.

End of preparation

As soon as the preparation cycle is complete, remove the beaker. Keeping the beaker in its slot could cause the Gelato to melt quickly.

Brik QR code

Once the cycle is complete, the QR code on the brik will no longer enable the machine for another cycle. Only in the event of a temporary power failure can the QR code be reused.

Repeated preparations

At the end of a cycle the machine is immediately ready to prepare another Gelato. However, we recommend a two-minute pause after 6 consecutive preparations to restore the best operating conditions..

How to store briks

For an improved performance of the machine, it is advisable to refrigerate the carton a few hours before use. In any case, the briks can be stored at room temperature, in a cool, dry place and away from heat sources.

Contact us

If you experience any problems or have any questions, please get in touch at one of the following places:



XXXXX XXXX

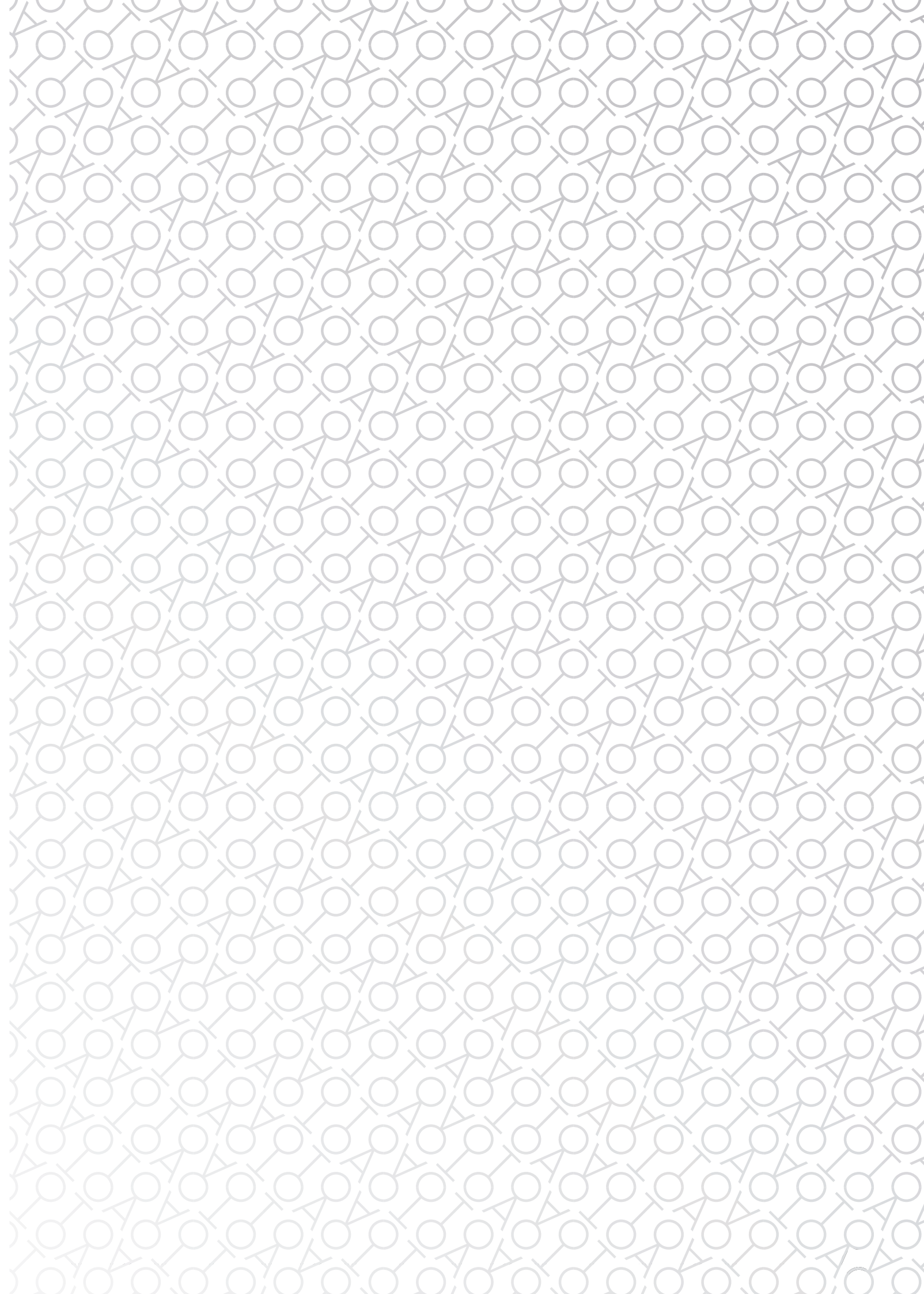


XXXXXX@tooa.com



Tooa S.p.A.
XXXXXX
XXX XXXXXXXX
XXXXXXX

www.tooa.com





tooa.com