

OWNER'S MANUAL

Spinn Maker



spinn

SPINN MAKER

Congratulations on owning a Spinn Maker and joining the Spinn Community!

This unique combination allows you to order fresh beans from your favorite local roaster and brew the perfect cup according to the roaster's recipe.

Note the numbers of your coffee maker for future reference (for Labels see page 32)

P/N : _ _ _ _ _ _ _ _ _ _ _ _ _ _ _ _ _

S/N : _ _ _ _ _ _ _ _ _ _ _ _ _

TABLE OF CONTENTS

SPINN MAKER	01
TABLE OF CONTENTS	02
SAFE USE OF THE MACHINE	03
UTILISER LA MACHINE EN TOUTE SÉCURITÉ	05
ELECTRICAL AND EXTENSION CORDS	07
SPINN APP	09
WHAT'S IN THE BOX?	11
PREPARING FOR FIRST USE	13
MAKING COFFEE	21
REGULAR MAINTENANCE	25

CLEANING THE MACHINE	26
TRANSPORT WORM MAINTENANCE	31
TROUBLESHOOTING	31
VACATION	32
SPECIFICATIONS	33
LABELS	33
WIRELESS & NETWORK	34
DISPOSAL	34
WARRANTY	34
NOTES	35

SAFE USE OF THE MACHINE

This chapter contains safety instructions that may result in injury or product damage when ignored. Read these instructions carefully before use.

IMPORTANT SAFEGUARDS

- Read all instructions before use.
- Do not touch the coffee spout during use or shortly after use, as this part can get extremely hot.
- Make sure the bean hopper is completely empty of foreign objects before filling with beans.
- Do not fill the bean hopper with water and do not clean it with a wet cloth, water or any other liquid.
- Unplug your Spinn when manually cleaning by hand. Do not unplug by pulling by the power cord.
- Never unplug the machine with wet hands.
- Allow the machine to cool down before disassembly, maintenance or cleaning, as internal components can be hot.
- The use of any unauthorized, third party accessories or attachments could result in fire, electric shock, or injury to persons and is strictly prohibited.
- Do not operate the machine with a damaged power cord or plug, or after the machine malfunctions or has been damaged in any manner. Reach out to our Support Team via the LIVE chat within the Spinn App or via email: TechTeam@spinn.com for assistance.
- Do not use the machine outdoors.
- Do not place the machine on an inclined or unstable surface.
- Do not remove the residue container during a brewing or cleaning cycle.
- Do not remove the lid or remove the water tank during a brewing or cleaning cycle.
- Do not move the machine while it is switched on.
- Do not let power cord hang over the edge of a table or counter.
- Do not use appliance other than for its intended use.
- Avoid contacting moving parts.
- Do not let the power cord touch hot surfaces.
- Do not place the machine on or near a hot gas or electric burner, or in a heated oven.
- This machine is not intended for use by persons (including children) with reduced physical, sensory, or mental capabilities, or lack of experience and knowledge, unless they are closely supervised and instructed concerning use of the machine by a person responsible for their safety.
- Close supervision is necessary when the machine is used by or near children.
- Children should be supervised to ensure that they do not play with the machine.
- Do not use abrasive sponges or cleaners.
- Do not put any parts of the machine in the dishwasher, unless specifically stated in this manual.
- To protect against fire, electric shock and injury to persons do not immerse cord, plugs, or the machine in water or other liquid.

- Do not open the machine, remove screws from the casing, or remove any other parts unless specifically stated in this manual as this will void your warranty.
- Do not modify the machine.

SAVE THESE INSTRUCTIONS

INTENDED USE

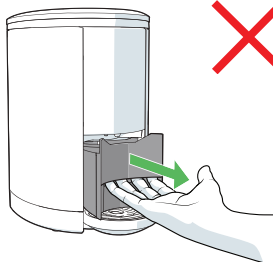
Using this machine for anything other than the intended use may cause damage to the product and void the warranty.

MISUSE

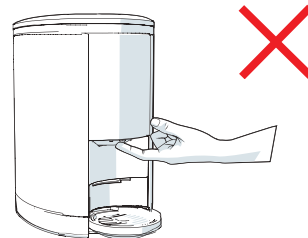
This chapter contains visual safety instructions about the most important risks when using this machine.



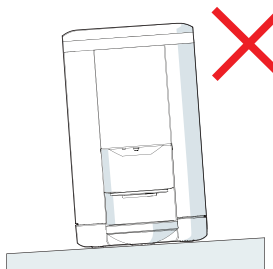
Do not remove Residue Container during a brewing or cleaning cycle until instructed to do so within the Spinn App. Internal surfaces will be hot.



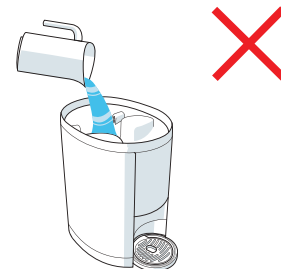
Do not touch the coffee spout during use or shortly after use, as this part can get extremely hot.



Do not place the machine on an inclined or unstable surface.



Do not fill the bean hopper with water and do not clean it with a wet cloth, water or any other liquid.



UTILISER LA MACHINE EN TOUTE SÉCURITÉ

Cette section contient les consignes de sécurité. Le non-respect de ces consignes peut provoquer des blessures ou endommager le produit. Veuillez lire attentivement les consignes de sécurité avant toute utilisation.

PRÉCAUTIONS IMPORTANTES

- Lire toutes les instructions avant d'utiliser la machine.
- Ne pas toucher la buse à café lorsque la machine est en service ou peu de temps après son utilisation car cette partie peut être extrêmement chaude.
- Assurez-vous que le réservoir à grains est complètement vide avant de le remplir de grains de café.
- Ne pas remplir le réservoir à grains avec de l'eau et ne pas le nettoyer avec un chiffon humide, de l'eau ou tout autre liquide.
- Éteindre et débrancher la machine lorsqu'elle n'est pas en service et avant d'effectuer tous travaux d'entretien ou de nettoyage. Pour débrancher la machine, saisir la fiche électrique et la retirer de la prise de courant. Ne jamais tirer sur le cordon d'alimentation.
- Ne jamais débrancher la machine avec les mains mouillées.
- Laisser la machine refroidir avant de procéder au démontage, à l'entretien ou au nettoyage car les composants internes peuvent être chauds.
- L'utilisation d'accessoires ou d'accessoires tiers non autorisés ou de pièces jointes non autorisés provenant de tiers peut entraîner un incendie, une électrocution ou des blessures et est strictement interdite.
- Ne pas utiliser la machine avec un cordon d'alimentation ou une fiche endommagée, de l'appareil ou après qu'il ait été endommagé de quelque manière que ce soit. Contactez notre équipe de support via le chat LIVE dans l'application Spinn ou par email : TechTeam@Spinn.com
- Ne pas utiliser la machine à l'extérieur.
- Ne pas placer la machine sur une surface inclinée ou instable.
- Ne pas retirer le compartiment à résidus pendant le cycle de percolation ou de nettoyage.
- Ne pas retirer le couvercle ou le réservoir à eau pendant le cycle de percolation ou de nettoyage.
- Ne déplacez pas la machine lorsqu'elle est allumée.
- Ne pas utiliser l'appareil pour un usage autre que celui auquel il est destiné.
- Éviter tout contact avec les pièces mobiles.
- Ne pas laisser le cordon d'alimentation toucher les surfaces chaudes.
- Ne pas placer la machine sur ou près d'une cuisinière à gaz ou électrique chaude, ou dans un four chaud.
- Cette machine n'est pas destinée à être utilisée par des personnes (y compris des enfants) ayant des capacités physiques, sensorielles ou mentales réduites ou qui manquent d'expérience ou de connaissances, à moins qu'elles ne soient sous la surveillance étroite d'une personne responsable de leur sécurité ou formées par cette personne en ce qui concerne l'utilisation de la machine.
- Une surveillance étroite est nécessaire lorsque la machine est utilisée à proximité d'enfants ou par des enfants.
- Les jeunes enfants doivent être surveillés afin de s'assurer qu'ils ne jouent pas avec la machine.
- Ne pas utiliser d'éponges ou de produits nettoyants abrasifs.

- Ne mettre aucune pièce de la machine dans le lave-vaisselle, sauf si cela est spécifiquement indiqué dans ce manuel.
- Pour prévenir tout risque d'incendie, de choc électrique ou de blessure, ne pas immerger le cordon ou la fiche électrique dans l'eau ou tout autre liquide.
- "N'ouvrez pas l'appareil, ne retirez pas les vis du boîtier, ni retirer d'autres ou retirer toute autre pièce, sauf si cela est dans ce manuel, car cela annulera votre annulerait votre garantie."
- Ne pas modifier la machine.

CONSERVER CES CONSIGNES

UTILISATION PRÉVUE

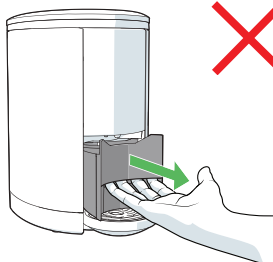
L'utilisation de cette machine à des fins autres que celles prévues peut endommager le produit et annuler la garantie.

MAUVAISE UTILISATION

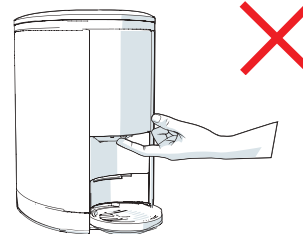
Cette section contient des consignes de sécurité visuelles concernant les risques les plus importants lors de l'utilisation de cette machine :



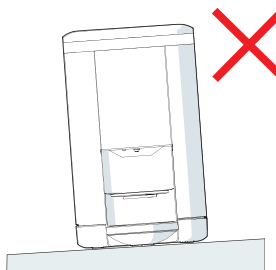
Ne retirez pas le récipient à résidus pendant un cycle de brassage ou de nettoyage avant d'y être invité par l'application Spinn. Les surfaces internes seront chaudes.



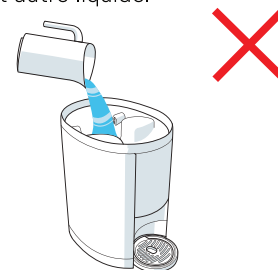
Ne pas toucher la buse à café lorsque la machine est en service ou peu de temps après son utilisation car cette partie peut être extrêmement chaude.



Ne pas placer la machine sur une surface inclinée ou instable.



Ne pas remplir le réservoir à grains avec de l'eau et ne pas le nettoyer avec un chiffon humide, de l'eau ou tout autre liquide.



ELECTRICAL AND EXTENSION CORDS

SHORT CORD INSTRUCTION

a) A short power-supply cord (or detachable power-supply cord) is provided to reduce risks resulting from becoming entangled in or tripping over a longer cord.

b) Longer detachable power-supply cords or extension cords are available and may be used if care is exercised in their use.

c) If a long detachable power-supply cord or extension cord is used:

1. The marked electrical rating of the detachable power-supply cord or extension cord should be at least as great as the electrical rating of the appliance and be compatible with a grounded 3 prong plug.

2. The longer cord should be arranged so that it will not drape over the counter top or table top where it can be pulled on by children or tripped over.

INSTRUCTION DU CORDON COURT

a) Un cordon d'alimentation court (ou un cordon d'alimentation détachable) est fourni pour réduire les risques liés à l'enchevêtrement ou au trébuchement d'un cordon plus long.

b) Des cordons d'alimentation ou des rallonges détachables plus longs sont disponibles et peuvent être utilisés si l'on prend soin de les utiliser.

c) Si vous utilisez un long cordon d'alimentation détachable ou une rallonge est utilisé:

1. La puissance électrique indiquée du cordon d'alimentation détachable ou de la rallonge doit être au moins aussi élevée que la puissance électrique de l'appareil. Si l'appareil est du type à mise à la terre, la rallonge doit être un cordon à trois fils avec mise à la terre.

2. Le cordon le plus long doit être disposé de manière à ne pas pendre du comptoir ou la table où il pourrait être tiré par des enfants ou trébuché.

SPINN APP & ACCESSORIES

The Spinn App allows you to:

- Connect with your machine.
- Explore, find and order local roasts on the Roaster Market.
- Match your machine's settings to your favorite roasts.
- Create, review and share custom recipes.
- Brew remotely.
- Monitor and understand your machine.
- Run maintenance programs.

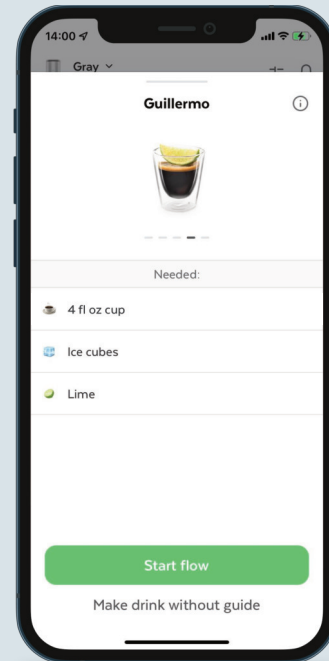
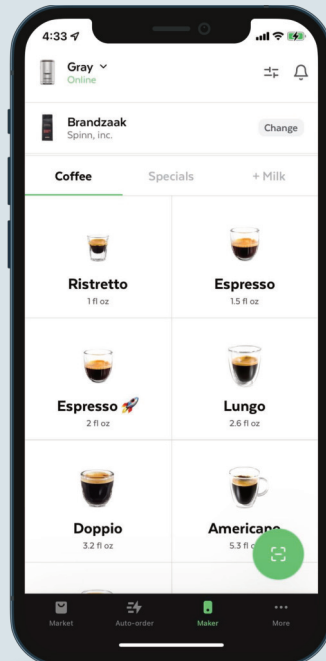
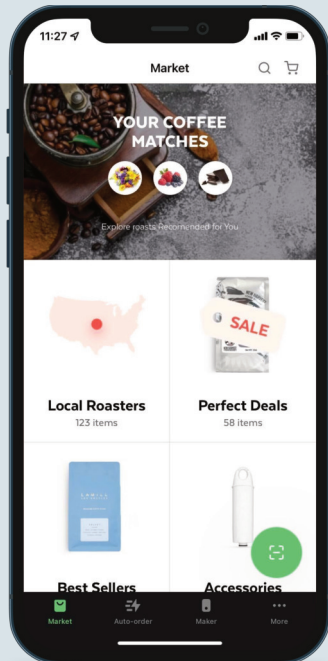
Download and install the Spinn App before you start using the machine:

- 1 Download the Spinn App.
- 1 *Scan the QR code on this page to go directly to the App Store or Google Play.*
- 2 Launch the app.
- 3 Sign up for a new account or log in with your existing account.
- 4 Set up your machine. (see Preparing For Use on page 14)

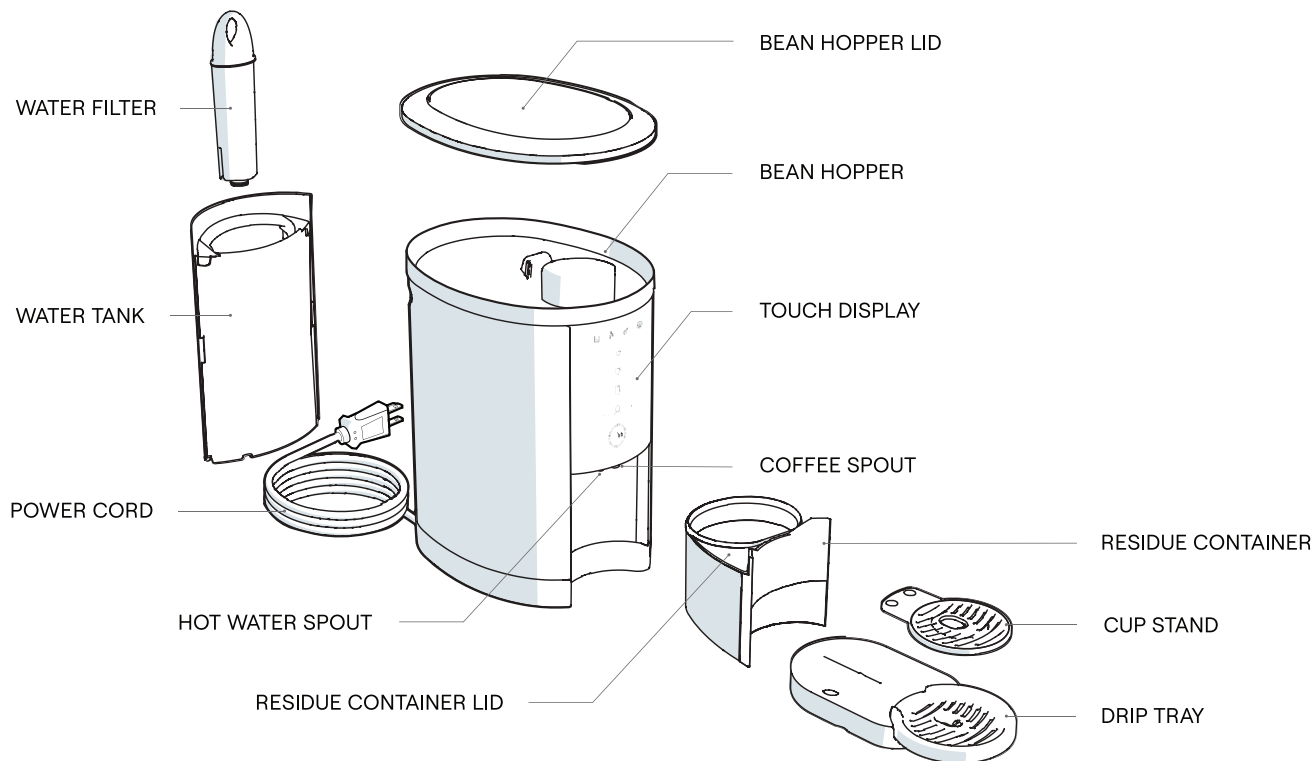
Accessories:

Visit our Accessories page to buy the Spinn Milk Frother, Carafe, Spare Parts and more at Spinn.com.





WHAT'S IN THE BOX?



 Please retain your Original Packaging for duration of warranty period.

 Waterline (*included for Pro Models)

INDICATORS



RESIDUE CONTAINER FULL



WATER TANK EMPTY



BEAN HOPPER EMPTY



DRIP TRAY FULL

BUTTONS



ESPRESSO



COFFEE



LUNGO



PERSONALIZED COFFEE SERVING
With 4 indicator lights



i The Espresso, Lungo and Coffee button will blink orange when cleaning or descaling is required and overdue.

MAIN BUTTON LIGHT FEEDBACK



MACHINE SWITCHED OFF



MACHINE READY



BREATHING - STAND BY



MACHINE ERROR



BEVERAGE BEING MADE



INITIALIZING



MACHINE OVERHEATED



CLEANING CYCLE

PREPARING FOR FIRST USE

WARNING!

Read and comply with the safety instructions (see Safe Use of the Machine on page 3) to avoid injuries and damage to the product.

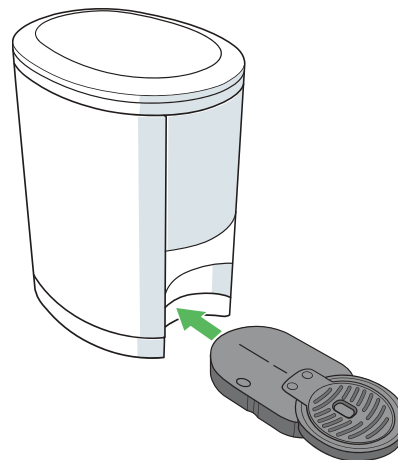
UNBOX THE MACHINE

- 1 Place the box on a stable surface.
- 2 Open the box.
- 3 Take out the drip tray and water filter.
- 4 Push the foam blocks sideways to reveal the machine.
- 5 Take out the machine and place it on a flat surface that is not sensitive to water.
- 6 Remove all packaging material from inside the bean hopper.
- 7 Check to ensure all parts are present. (see What's in the Box? on page 11).

PLACE THE DRIP TRAY

The drip tray is not yet placed into the machine upon delivery.

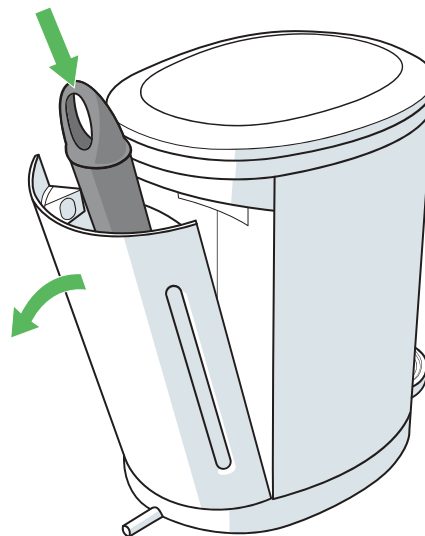
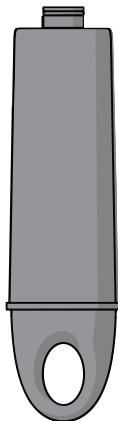
- 1 Remove all packaging material.
- 2 Slide the drip tray into the machine.



PREPARE THE WATER TANK

The water filter lengthens the lifetime of the water system and creates better tasting coffee.

- ❶ Tilt the water tank backwards to remove it.
 - ❷ Rinse the water tank with clean water.
 - ❸ Take the water filter out of its bag.
 - ❹ Slide the water filter in the slots on the bottom of the water tank, exerting slight pressure.
- ❗ *When the machine is turned on, follow the instruction on the app to run the "New Water Filter" cycle.*

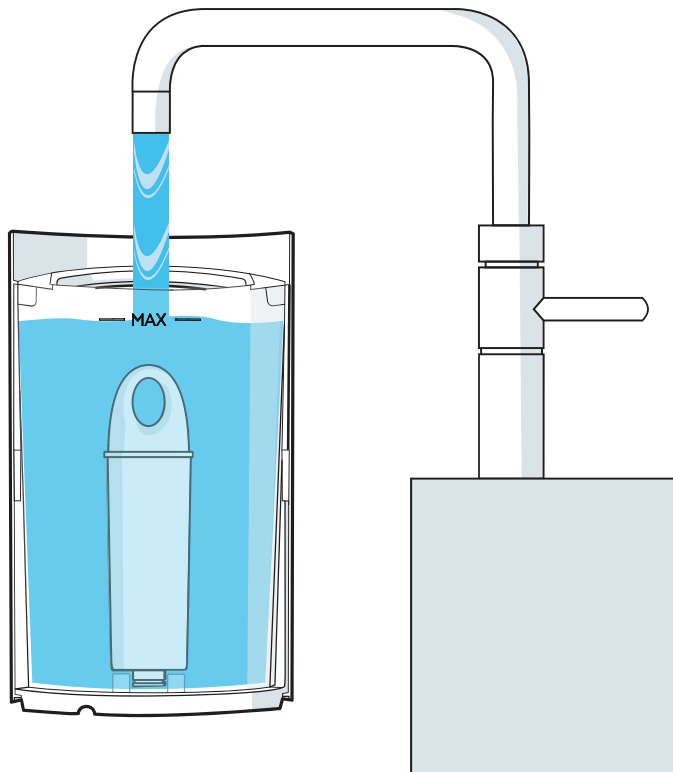


FILL THE WATER TANK

- 1 Tilt the water tank backwards.
- 2 **OPTIONAL** – Grab the handle and lift the water tank out of the machine to fill it at the tap.
- 3 Fill the water tank Fill the water tank to the **MAX** line.
- 4 Gently place the water tank back on the holder.
- 5 Close the water tank.

⚠ Do not fill the water tank with hot or boiling water.

⚠ Use clean water.



CONNECT THE DIRECT WATERLINE (For Pro Models Only)

❶ Remove the blue lock clip

On the back side of the machine you will find the internal connector remove the blue lock clip.

❷ Insert the waterline

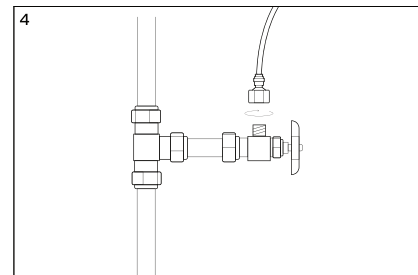
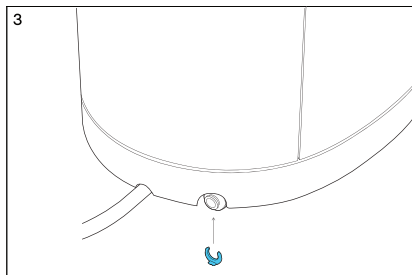
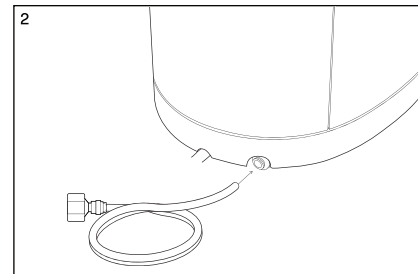
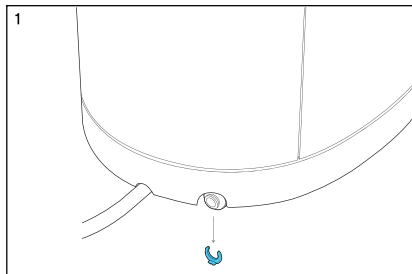
In the box you would have found the waterline, push this tube firmly into the connector and wiggle it in about 3/4 inch.

❸ Place the lock clip back

Secure the waterline by sliding the lock clip back into place.

❹ Connect to water supply

Close the water supply, connect the external connector and open the water supply.



CONNECT TO A POWER SUPPLY

- 1 Connect the power cord to a power outlet. The machine will turn on, and is ready to use when the **Main button** glows white.

i *The grinder will need a few seconds to initialize.*

i *The **Main button** breathes a white color when it is in standby.*

i *The **Main button** spins with a white color when it is in use.*

CONNECT TO THE APP

i *Make sure the machine is fully assembled.*

- 1 Download the Spinn App from the App Store or Google Play. (See Spinn App on page 10).

- 2 Open the app.

- 3 Plug the Spinn Maker into the power outlet (it is discoverable for up to 5 minutes as of now).

- 4 Select the Maker tab.

- 5 Follow the instructions on the screen.

i *If the above does not work please repeat step 3, 4 and 5 or follow the next instructions to reset the network.*

NETWORK RESET

It is recommended to reset the machine's network settings whenever you set up a new Wi-Fi network. This procedure clears the list of accounts that have access to the machine.

i *Make sure the machine is fully assembled and switched on.*

- 1 Press and hold the **Main button** until you hear a beep and the Main button turns blue.

- 2 Press and hold the **Main button** until you hear a beep, again. You can now set up the machine in the app.

DISCONNECT FROM THE SPINN CLOUD

To disconnect the machine from the Spinn Cloud, check the main button light and follow the steps:



- 1 Press and hold the Main button until it starts breathing.
- 2 Press and hold the Main button again until it stops breathing white.
- 3 Press and hold the Main button for the third time until it turns solid blue.
- 4 Press and hold the Main button until it starts spinning blue.
- 5 Press and hold the Main button until it starts breathing white again.

FILL THE BEAN HOPPER

- ❶ Remove the bean hopper lid.
- ❷ Fill the bean hopper with coffee beans.
- ❸ Spread the beans evenly.
- ❹ Place the bean hopper lid back.

- ⚠ Do not fill the bean hopper with water or anything other than whole, roasted coffee beans.
- ⚠ Check the bean hopper for foreign objects that could damage the grinder.
- ⚠ Coffee beans which have been treated with additives (e.g. sugar), ground coffee or freeze-dried coffee will damage the grinder. Only use roasted, untreated coffee beans to fill the hopper.
- ⚠ Do not use oily coffee beans. Oily coffee beans (which are very shiny by nature) will clog your Spinn maker.



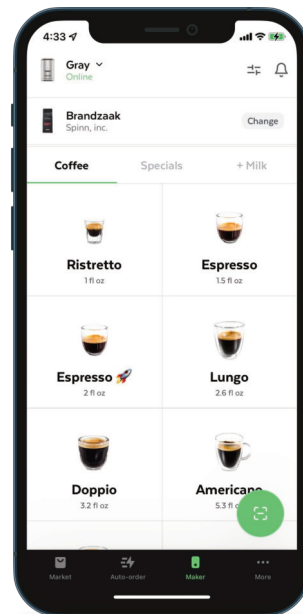
DOWNLOAD YOUR RECIPE

Whenever you fill the bean hopper with new beans, make sure that you notify your machine of the type of beans you are about to use.

- 1 Open the Spinn App.
- 2 Choose your Roaster Market beans in the machine control section of the app.
- 3 If you are using beans not found or purchased from the Roaster Market, use the green scan button to add the beans manually.

After selecting your beans, the machine will adjust the hardware and recipe settings to the set type of beans.

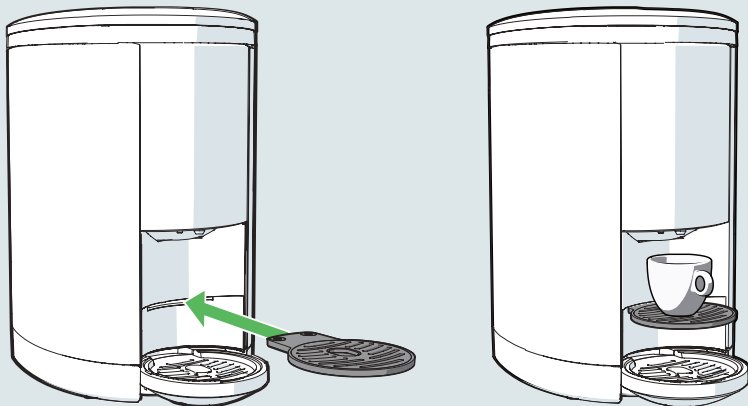
- i See the Market tab of the Spinn App for an overview of all available coffee beans from our network of roasters.



MAKING COFFEE

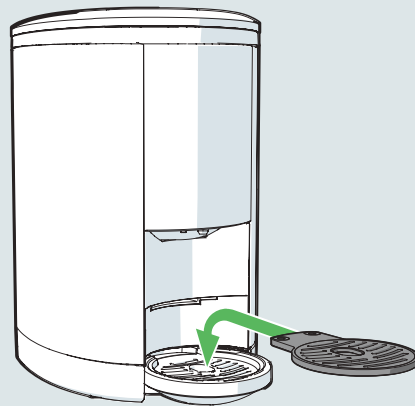
BREWING WITH AN ESPRESSO OR LUNGO CUP

- 1 Make sure that the drip tray is present.
- 2 Place the cup stand in the upper position.
- 3 Place your cup on the cup stand.



BREWING WITH A COFFEE CUP

- 1 Make sure that the drip tray is present.
- 2 Place the cup stand in the drip tray.

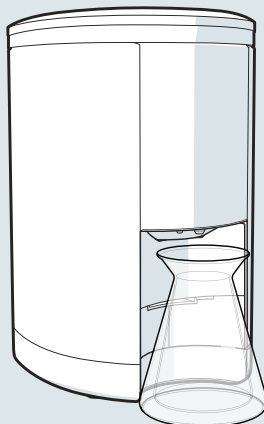



BREWING WITH A CARAFE OR TRAVEL MUG


③ Place your cup on the cup stand.

① Remove the drip tray and the cup stand.

② Place your carafe or travel mug.



 When the drip tray is absent, drops of coffee may fall from the spout, which may cause spots on the counter.

 *Place the drip tray back after each serving without the drip tray present. Without the drip tray, no pre/post flush, cleanshot or other cleaning cycles are possible.*

MAKE A COFFEE

- i** Make sure the water tank is full or the waterline is connected (Pro version).
 - 1** Press the Main button to wake up the machine.
 - 2** Press the Espresso, Lungo or Coffee button or use the Preset button to select one of your custom recipes.
 - 3** Press the Main button. Brewing will begin.
 - 4** Wait until the Main button turns white before you remove the drink.
 - 5** Enjoy your coffee!
 - 6** Wait until the Main button turns white before making another cup of coffee or removing the residue container.
- i** The coffee machine needs some time to expel coffee residue into the residue container after your coffee is ready.
- i** Check the app during the brewing process for data and more interesting information.

BUTTONS



ESPRESSO



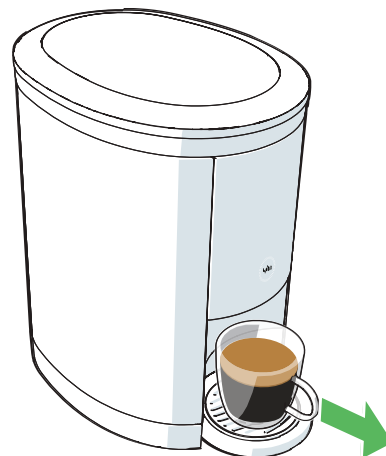
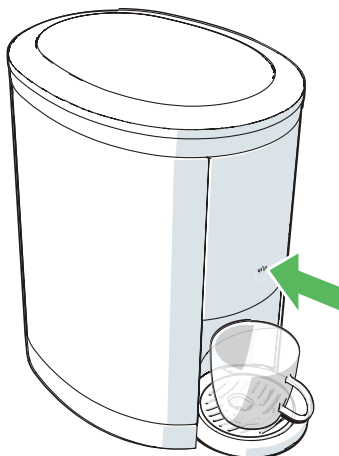
COFFEE



LUNGO



PERSONALIZED COFFEE SERVING



REMOTE BREWING

The Spinn App enables you to make coffee from any location, for example from your bed or on your way home from work. At the same time, the Spinn App enables you to create and select custom recipes.

- i** Make sure the machine is connected to WiFi and the machine status is online in your Spinn App.*
- i** Make sure the drip tray is in place. Make sure an empty cup is placed that is large enough to contain the desired coffee size.*

⚠ Be sure to unplug your machine when on vacation to prevent accidental, remote brewing. See page 32 for more information on Vacation Mode.

To make a coffee with the Spinn App:

- 1** Open the Spinn App.
- 2** Select the Maker tab.
- 3** Select coffee type.
- 4** Select **Make drink** or **Customize drink**.
- 5** Brewing will begin.

⚠ If necessary, simply cancel the serving within the app.

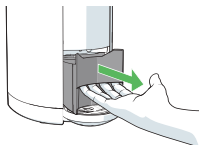


REGULAR MAINTENANCE

REMOVE COFFEE GROUNDS

- i** The coffee residue icon will light up when the Residue Container is full and needs to be emptied.
- i** Empty the Residue Container in your garden to promote plant growth.

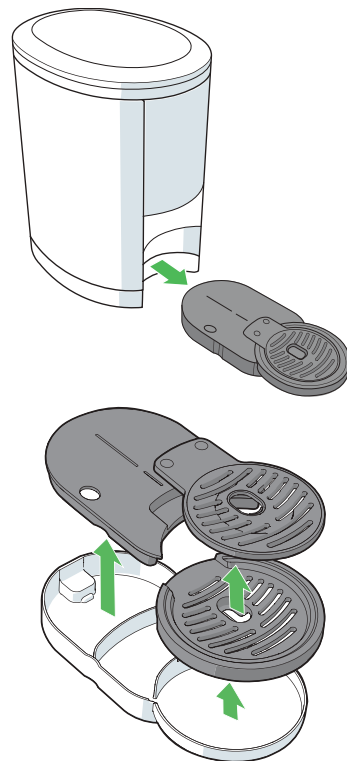
- 1** Pull the Residue Container from the machine.
- 2** Empty the container.
- 3** Rinse the container at the tap.
- 4** Clean Residue Container Compartment (area where container is placed in).
- 5** Place the container back in the machine.
- 6** Be sure you do not accidentally dispose of the green bin lid.



REMOVE DRIP WATER

- i** The drip tray icon will light up when the drip tray is full and needs to be emptied.
- i** When the drip tray is absent, the machine cannot make an espresso or lungo. To make an espresso or lungo, place the drip tray back into the machine.

- 1** Pull the drip tray from the machine.
- 2** Remove the cup stand.
- 3** Remove the two drip tray lids.
- 4** Empty the drip tray.
- 5** Reassemble the drip tray.
- 6** Slide it back into the machine.



CLEANING THE MACHINE

Unplug the device before cleaning

WATER TANK

To clean the water tank:

- ❶ Remove the water tank.
- ❷ Remove the water filter from the tank.
- ❸ Rinse and clean the water tank and water filter with clean, running water.
- ❹ Dry the parts with a clean, dry cloth.
- ❺ Place the water filter back in the water tank and place it back into the machine.

⚠ Do not use abrasive sponges or cleaners.

RESIDUE CONTAINER

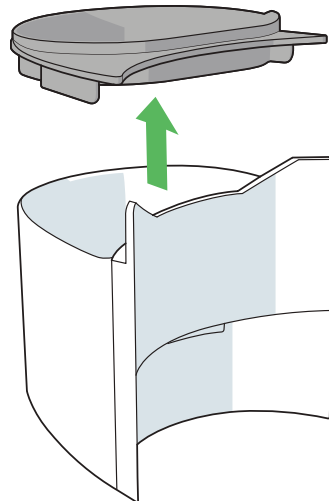
To clean the Residue Container:

- ❶ Remove the Residue Container from the machine.
- ❷ Remove the Residue Container lid.
- ❸ Empty the Residue Container.
- ❹ Rinse and clean the separate parts with clean, running water.

i *Hand washing of the Residue Container and the lid is preferred for best results.*

- ❺ Dry the parts with a clean, dry cloth.
- ❻ Place the lid back on the Residue Container.
- ❼ Place the Residue Container back in the machine.

⚠ **WARNING:** Never use the machine when the Residue Container lid is missing!



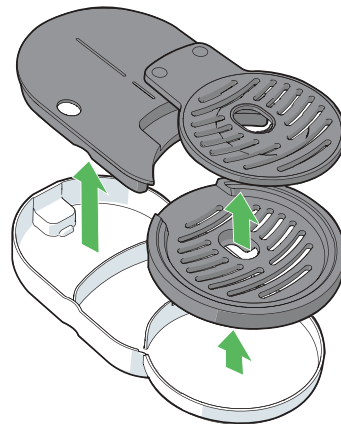
EXTERIOR

- 1 Clean the hot water and coffee spouts with a clean, damp cloth.
- 2 Clean the housing of the residue container with a clean, damp cloth.
- 3 Clean the machine exterior with a clean, damp cloth.
- 4 Clean the bean hopper lid with a clean, damp cloth.

- ⚠ Do not immerse the machine in water or any other liquid.
- ⚠ Do not touch the coffee spout during or after use, as it might be hot.

DRIP TRAY

- 1 Remove and disassemble the Drip Tray.
 - 2 Rinse all parts with clean water.
- i** *Hand washing of the Drip Tray and the lid is preferred for best results.*
- 3 Dry all parts with a clean, dry cloth.
 - 4 Reassemble the Drip Tray and slide it back into the machine.



BEAN HOPPER

Some coffee beans tend to be more oily and can cause a buildup of residue in the hopper, making it difficult for the beans to glide towards the grinder chute, and can result in a watered down coffee. Wiping down the hopper with a clean, dry cloth between bags of beans is highly recommended.

- ❶ When your beans are nearly gone is the best time to wipe down the hopper.
- ❷ **OPTIONAL** – Execute a 'Hopper flush' via the app to empty the hopper of the remaining few beans.
- ❸ Clean the bean hopper with a soft, dry cloth.
- ❹ Fill the bean hopper with fresh coffee beans, then close the bean hopper lid.



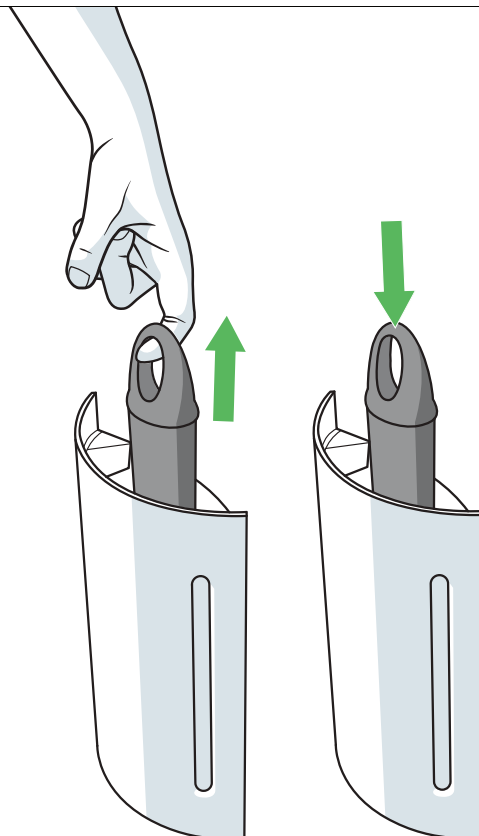
❶ *Emptying the hopper should never be done by tilting or turning the machine upside down.*

⚠ **WARNING:** Any other servicing should be performed by a certified Spinn Technician.

CHANGING THE WATER FILTER

i For best results the water filter must be replaced **every 2 months or after 1000 cups of coffee**, whichever comes first. See the App for more information about the remaining lifetime of the filter.

- 1 Remove the water tank from the machine.
- 2 Pull firmly to remove the water filter from the water tank and dispose it.
- 3 Take the new water filter out of its bag.
- 4 Slide the new water filter in the slots on the bottom of the water tank, exerting slight pressure.
- 5 Fill the water tank with fresh cold water.
- 6 Place the water tank back into the machine.
- 7 Run the **"New water filter"** cycle within the Spinn App.



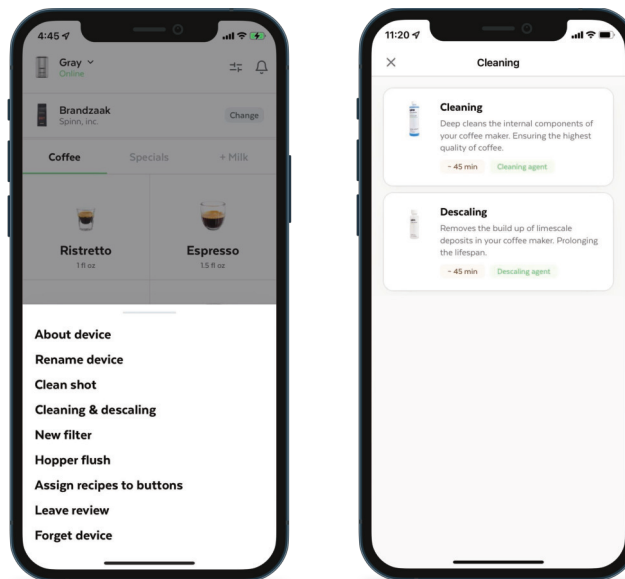
⚠ For best results, replace the filter after extended periods of not using your Spinn (such as after a long vacation).

CLEANING CYCLE

- i** For the machine to perform the best way possible, a thorough cleaning is required on a monthly basis (or after 180 cups brewed). Open the Spinn App to start, and follow the steps.

DESCALING CYCLE

- i** For the machine to perform the best way possible, a thorough descaling is required every 6 months (or after 1000 cups brewed). Open the Spinn App to start, and follow the steps.
- i** You can purchase the Spinn Maintenance Kit (~6 month supply) within the Spinn App or at [Spinn.com](https://www.spinn.com)

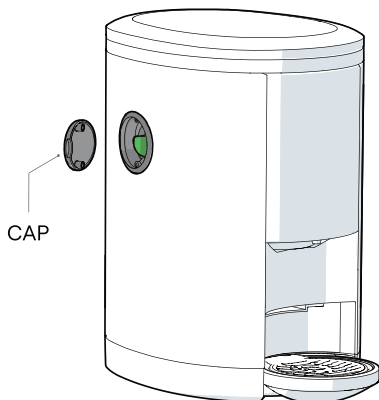


⚠ WARNING: Failure to run cleaning and descaling cycles when prompted will lead to machine malfunction, and may void your warranty.

TRANSPORT WORM MAINTENANCE

Coffee grounds are being transported from the grinder to the brewer. In case of excessive buildup, the transport worm needs to be removed, cleaned and re-installed.

You will get a notification in the app when maintenance needs to be performed here. Please contact support for instructions.



⚠ WARNING: Be sure to unplug your Spinn before removing the cap to avoid injury from moving parts.

⚠ Do not place any of the transport worm parts in the dishwasher. Only clean with lukewarm soapy water and let the parts dry completely before reassembling.



Watch transport worm video instructions here..

TROUBLESHOOTING

For the most frequently asked questions please scan the following QR-code:



VACATION

If you will be away from your Spinn for more than a couple of days for travel, please be sure to follow the steps below before you head out:

- ❶ Run a couple of clean shots through the Spinn App.
- ❷ Unplug your Spinn.
- ❸ Empty the water tank and leave it out to dry.
- ❹ Empty and clean the residue bin and drip tray, leave them out to dry.
- ❺ Place any unused bags of coffee beans in the freezer to help retain the freshness while you are away. Also check the status of your auto orders for beans to avoid them sitting on your porch if you will be away when they are scheduled for delivery.
- ❻ Enjoy your travels!
- ❼ When you return, place the residue bin and drip tray back in place, refill your water tank and prime the water filter (like you do through the App when changing filters.)
- ❽ Add those beans from the freezer (be sure to allow time to defrost!), reactivate your auto orders if have them paused, and enjoy!



SPECIFICATIONS

GENERAL SPECIFICATIONS

Height	_____	14.1" (35.8 cm)
Width	_____	8.6" (21.8 cm)
Length	_____	13.2" (33.6 cm)
Weight	_____	18.3 lbs (8.3 kg)
Power supply	____	110-125V ~ 50-60 Hz
Water tank	____	40 oz (1.2 L)
Bean hopper	____	18 oz (500 g)
Power cord	____	33.5" (85 cm)


WATER CONNECTION

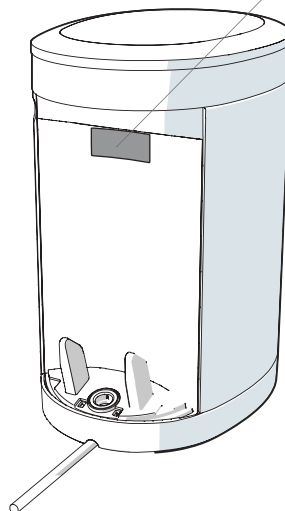
Max. water pressure 60 PSI

Min. water pressure 25 PSI

LABELS

Unique, machine specific information can be found on the label located behind the water tank.

 Do not remove labels or any stickers from your machine as this will void your warranty.



WIRELESS & NETWORK

Any changes or modifications not expressly approved by the party responsible for compliance could void the user's authority to operate the equipment.

Note: This equipment has been tested and found to comply with the limits for a Class B digital device, pursuant to part 15 of the FCC Rules. These limits are designed to provide reasonable protection against harmful interference in a residential installation. This equipment generates uses and can radiate radio frequency energy and, if not installed and used in accordance with the instructions, may cause harmful interference to radio communications. However, there is no guarantee that interference will not occur in a particular installation. If this equipment does cause harmful interference to radio or television reception, which can be determined by turning the equipment off and on, the user is encouraged to try to correct the interference by one or more of the following measures:

- Reorient or relocate the receiving antenna.
- Increase the separation between the equipment and receiver.
- Connect the equipment into an outlet on a circuit different from that to which the receiver is connected.
- Consult the dealer or an experienced radio/TV technician for help.

This equipment complies with FCC radiation exposure limits set forth for an uncontrolled environment. This equipment should be installed and operated with minimum distance 20cm between the radiator & your body. These FCC statements shall be stated in the user manual.

This device complies with Industry Canada licence-exempt RSS standard(s). Operation is subject to the following two conditions: (1) This device may not cause interference, and (2) This device must accept any interference, including interference that may cause undesired operation of the device.

Le présent appareil est conforme aux CNR d'Industrie Canada applicables aux appareils radio exempts de licence. L'exploitation est autorisée aux deux conditions suivantes: (1) l'appareil ne doit pas produire de brouillage, et (2) l'utilisateur de l'appareil doit accepter tout brouillage radioélectrique subi, même si le brouillage est susceptible d'en compromettre le fonctionnement.

DISPOSAL

The symbol on the material, accessories or packaging indicates that this product must not be treated as domestic waste. Dispose of the equipment via the collection point for the recycling of scrap electrical and electronic equipment.

WARRANTY

You can find warranty information and the Spinn return policy at **spinn.com/returns**

Responsible Party in North America can be found on the back of the owner's guide.

[illegible]

This image shows a single sheet of white paper with horizontal ruling lines. The lines are evenly spaced and run across the width of the page. There are no margins, text, or other markings on the paper.



Spinn Inc.

1040 Mariposa St.

San Francisco, CA 94107.

www.spinn.com

support@spinn.com

LIVE Chat Support - 7 Days a Week - 9 to 5 PST

