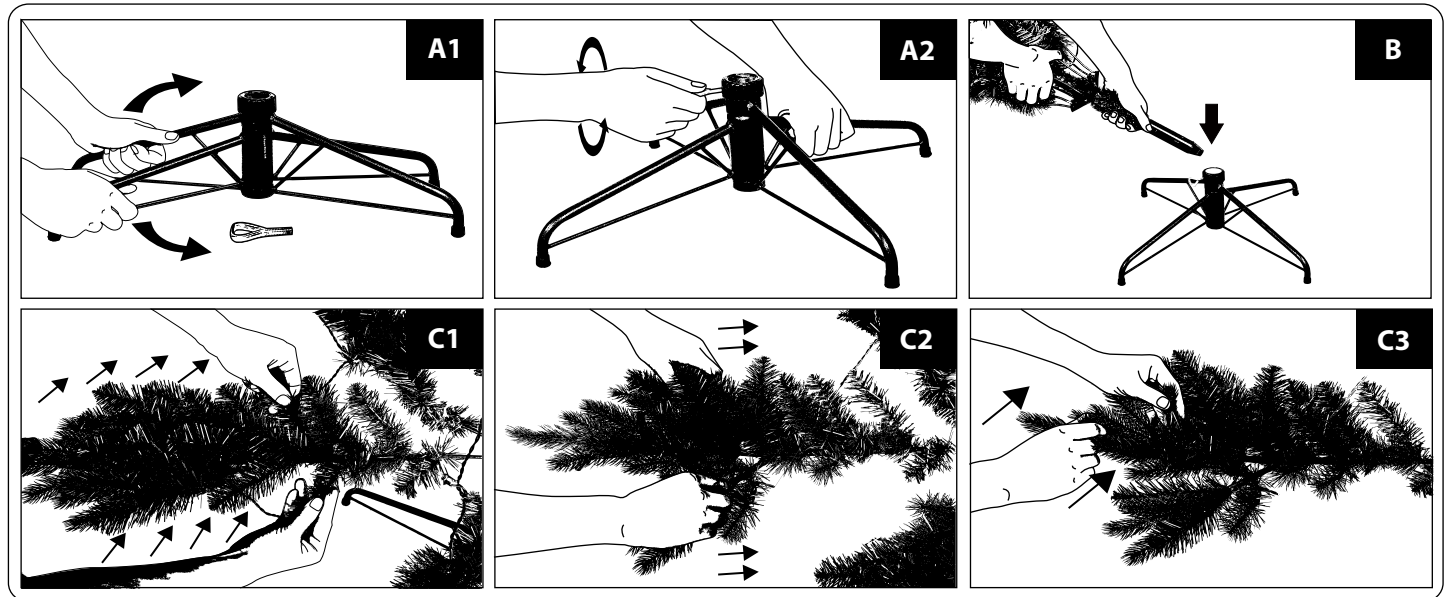


# ASSEMBLY INSTRUCTIONS

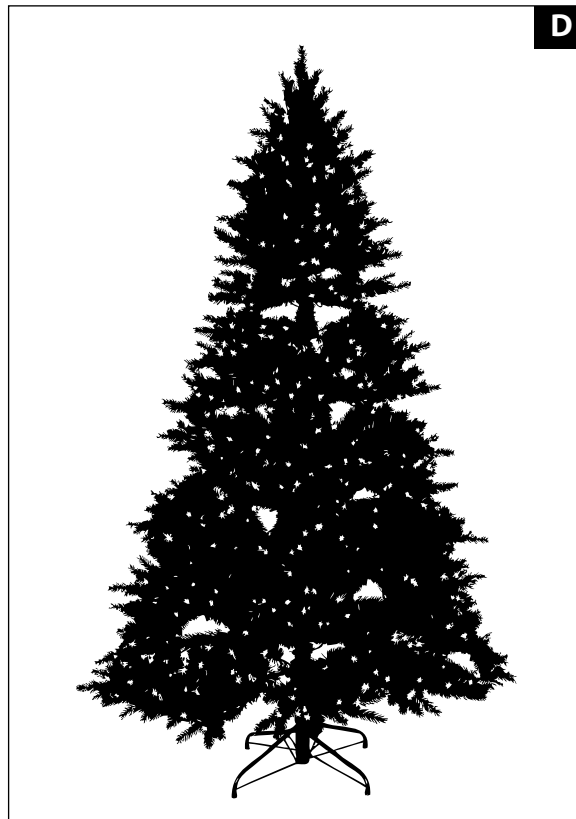
## Getting Ready

- Before you start to assemble your tree, choose a location that provides enough space for the width of your tree.
- Unwrap the plastic wrap from around all the sections and notate the identifying tag on each section. All sections are labeled for ease of assembly (for example, a three section tree will be comprised of Sections 1, 2 and 3. Section 1 is the bottom section). Keep the ties holding the branches fastened until the section has been either inserted into its corresponding section or tree stand.

## Assembly



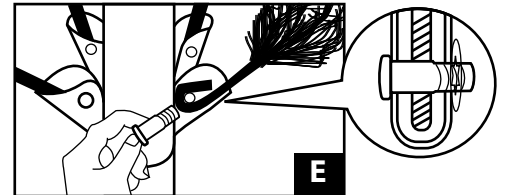
- Assemble the tree stand by pulling apart the legs of the stand so that they are X-shaped. Match the hole of the plastic flange with the pre-drilled hole in the stand. Screw the eyebolt through the hole in the stand, making sure it does not protrude into the center of the stand so that the tree trunk can be inserted easily into the stand. **(See Figure A1 and A2)**  
☒ **Helpful Tip:** The eye bolt should easily screw into the stand. If you are having difficulty inserting the eye bolt, realign the flange and stand holes to avoid stripping the eye bolt or cracking the flange.
- Locate the bottom section of your tree – it should have a tag with the first number printed on it. Fully insert the bottom section of your tree (with branches still tied) into the stand. Tighten the eyebolt(s) on your tree stand so that the section is straight. **(See Figure B)**
- Untie the branches and allow branches to fall into place.  
☒ **Helpful Tip:** Remember, the tree is highly-compressed for shipping and requires proper shaping for a full, realistic look.
- For best results, shape each section as you go working from bottom to top. Start with the branch tips closest to the trunk. The inner branches should be separated with each branch tip pointing up toward the ceiling to block light to create a full look and hide the trunk from view. For the outer branch tips, separate them so that they point up and out to create your desired silhouette. **(See Figure C1 to C3)** Insert the subsequent sections, untying and shaping one section at a time, until you have inserted and shaped all of the sections.  
☒ **Helpful Tip:** If you have purchased a tall tree, you may want to shape the top section before inserting it into Section 2.
- After shaping your whole tree, step back and take an overall look at the tree. Shift branches to fill any gaps. If your tree looks like the one in **Figure D**, you did NOT properly shape the tree. **Figure D** shows a tree that just had its outer tips mildly shaped, with no work done at the center and middle.



### ***Troubleshooting***

If a branch has come detached from the tree

- Find the hinge pin and plastic washer that are included with your tree
- Place the branch into the bracket attached to the center pole with the branch fully seated in the bracket
- Insert the hinge pin through the bracket holes and limb and secure the opposite side with the washer. **(See Figure E)**



### ***Tree Storage***

- Remove all ornaments and decorations.
- Gently lift off the top and middle sections, and remove the bottom section from the tree stand.
- Carefully replace the tree in its box and tape it shut. Do not store tree in a damp area or in an area where the temperature exceeds 100° F.