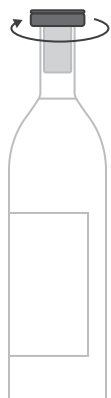
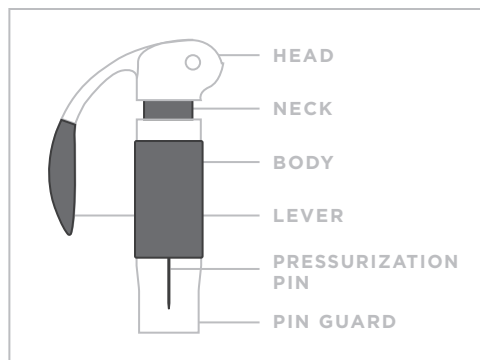




AERO WINE OPENER



01 REMOVE FOIL

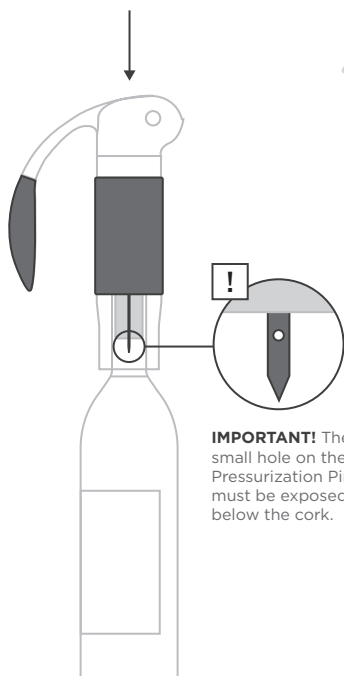
using provided Foil Cutter to prevent damage to your Aero Wine Opener.

Squeeze cutting wheels against cap firmly while turning bottle.



05 ENJOY WINE

Pour wine into glass and enjoy!



IMPORTANT! The small hole on the Pressurization Pin must be exposed below the cork.

02 INSERT PRESSURIZATION PIN

Grip head and body of the Aero and place on wine bottle.

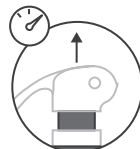
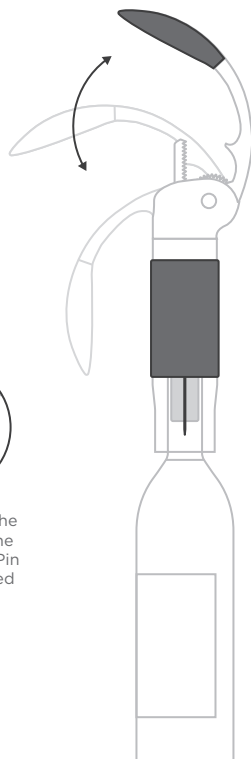
Push down on head until the Pressurization Pin slides through the cork and is exposed below.

The transparent Pin Guard is designed to help you align the Pin with the center of the cork.



06 CLEANING THE AERO

Hand wash only.



The head of the Aero will naturally rise as pressure builds.

03 BUILD AIR PRESSURE

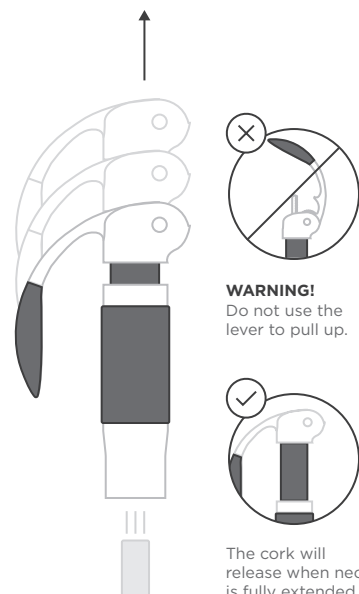
Gripping the rubber body of the Aero, raise and lower lever to build air pressure between the wine and the cork.

Fully extend lever with each pump in order to maximize air pressure.

The cork will pop off the bottle when adequate pressure has been created.



IMPORTANT! The number of pumps will vary due to varying shapes and materials of the bottle and cork.



WARNING! Do not use the lever to pull up.

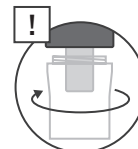


The cork will release when neck is fully extended.

04 EJECT CORK

Remove the Aero from wine bottle.

Hold body firmly down while pulling head up to release the cork.



IMPORTANT! If cork does not release, simply unscrew the Pin Guard by turning clockwise and remove cork with hand.