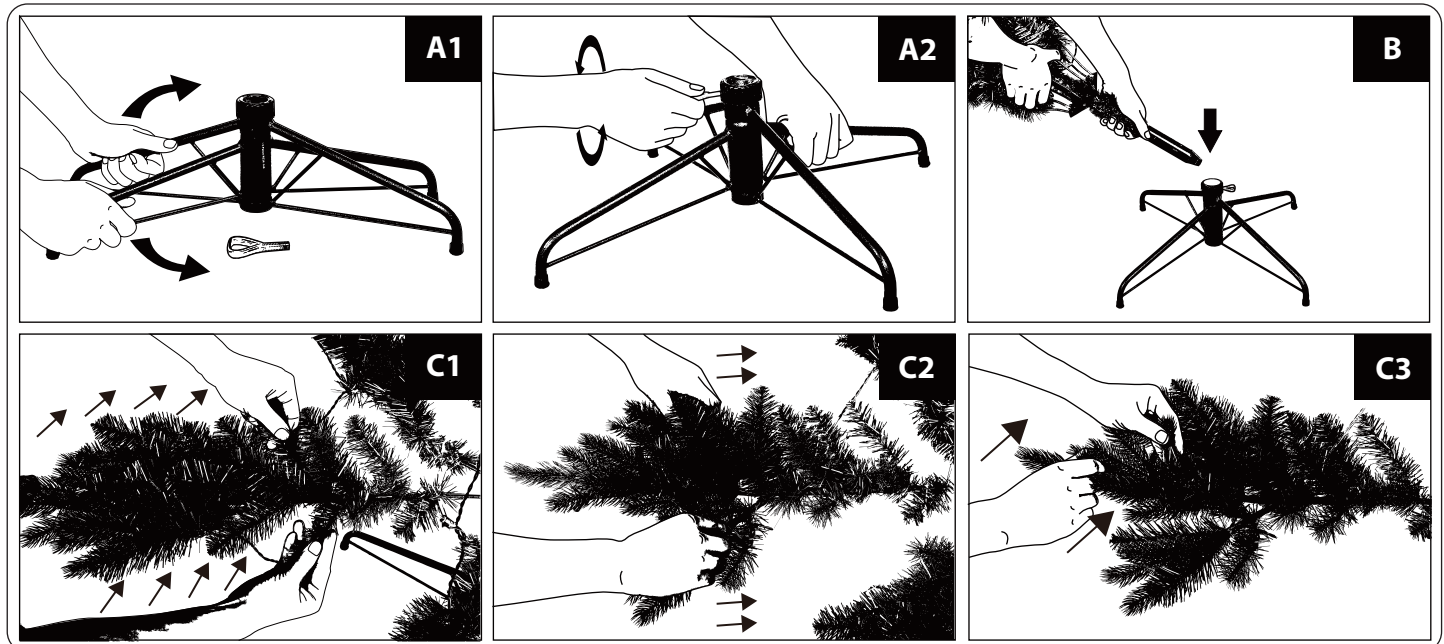


ASSEMBLY INSTRUCTIONS

Getting Ready

- Before you start to assemble your tree, choose a location that provides enough space for the width of your tree. For pre-lit trees, choose a location near an electrical outlet.
- Unwrap the plastic wrap from around all the sections and notate the identifying tag on each section. All sections are labeled for ease of assembly (for example, a three section tree will be comprised of Sections 1, 2 and 3. Section 1 is the bottom section). Keep the ties holding the branches fastened until the section has been either inserted into its corresponding section or tree stand.
- Identify and safely store the included extra bulbs, hinge pins provided, so you can find them easily if bulbs or hinges need to be replaced over the years.

Assembly



- Assemble the tree stand by pulling apart the legs of the stand so that they are X-shaped. Match the hole of the plastic flange with the pre-drilled hole in the stand. Screw the eyebolt through the hole in the stand, making sure it does not protrude into the center of the stand so that the tree trunk can be inserted easily into the stand. **(See Fig. A1 and A2)**
 - ✓ **Helpful Tip:** The eye bolt should easily screw into the stand. If you are having difficulty inserting the eye bolt, realign the flange and stand holes to avoid stripping the eye bolt or cracking the flange.
- Locate the bottom section of your tree -it should have a tag with the first number printed on it. Fully insert the bottom section of your tree (with branches still tied) into the stand. Tighten the eyebolt(s) on your tree stand so that the section is straight. **(See Fig. B)**
- Untie the branches and allow branches to fall into place.
 - ✓ **Helpful Tip:** Remember, the tree is highly-compressed for shipping and requires proper shaping for a full, realistic look.
- For best results, shape each section as you go working from bottom to top. Start with the branch tips closest to the trunk. The inner branches should be separated with each branch tip pointing up toward the ceiling to create a full look and hide the trunk from view. For the outer branch tips, separate them so that they point up and out to create your desired silhouette. **(See Fig. C1 to C3)** Insert the subsequent sections, untying and shaping one section at a time, until you have inserted and shaped all of the sections.
 - ✓ **Helpful Tip:** If you have purchased a tall tree, you may want to shape the top section before inserting it into Section 2.
- **FOR PRELIT TREES:** As you are assembling the tree, Connect the plug(s) securely to the extension cord(s) as per the color labels indicated in **Fig. D** and plug the adaptor connected with green labeled extension cord into the wall outlet. Your entire tree should now be lit. If some bulbs do not light or flicker, search for any loose plugs and/or broken, loose or missing bulbs. Replace bulbs promptly in order to maintain the performance and life expectancy of your pre-lit tree.
- After shaping (and lighting) your whole tree, step back and take an overall look at the tree. Shift branches to fill any gaps and ensure lights are well-spaced. If your tree looks like the one in **Fig. E**, you did NOT properly shape the tree. **Fig. E** shows a tree that just had its outer tips mildly shaped, with no work done at the center and middle.

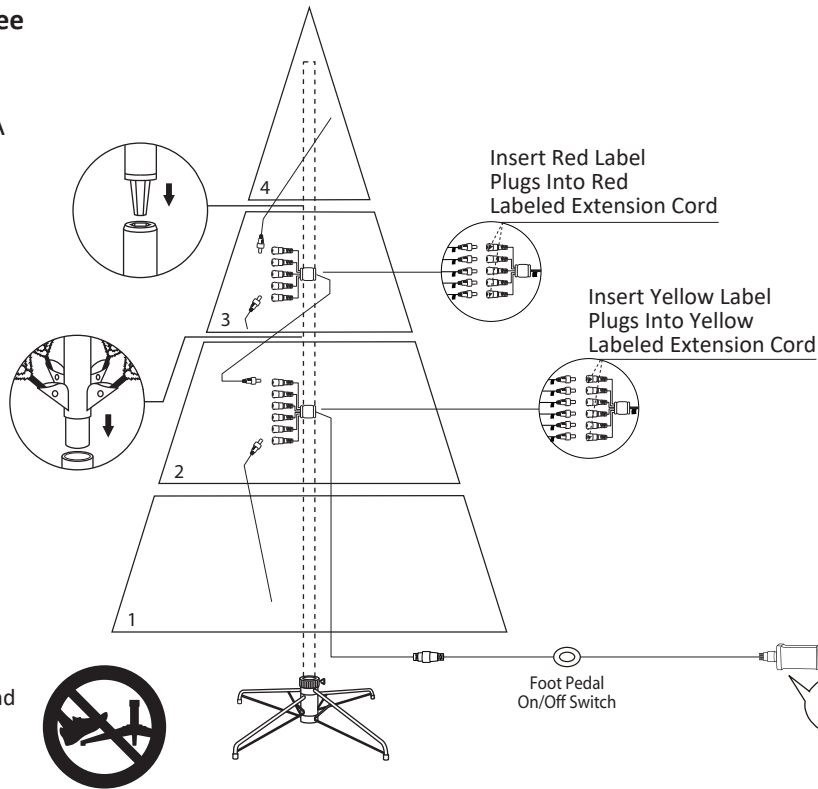
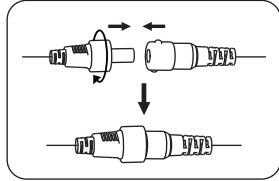
*Electrical Rating For The Tree

(For Indoor Use Only)

18 Watts

Input: AC 120V, 60Hz, 0.38A

Output: DC 28V, 0.643A



Note: Do not step on the tree stand legs during the setup. This may deform the tree stand and may result in an unbalanced tree.

Troubleshooting

If your entire tree does not light:

- Ensure all plugs are properly connected and adaptor is plugged into the wall outlet.
- Ensure all power cords from the sections are properly plugged into the main section.

If lights in certain areas of the tree are not lit:

- Ensure bulbs are securely fastened into bases.
- Verify all wires are intact.
- Please check for loose, broken or missing light bulbs and replace as needed.

If a branch has come detached from the tree

- Find the hinge pin and plastic washer that are included with your tree.
- Place the branch into the bracket attached to the center pole with the branch fully seated in the bracket.
- Insert the hinge pin through the bracket holes and limb and secure the opposite side with the washer.

Tree Storage

- Unplug extension cord with adaptor from the wall outlet and then disconnect light extension cord between each section of the tree.
- Remove all ornaments and decorations.
- Unplug each section of extension cord, keeping pre-plugged strings of lights connected together.
- Gently lift off the top and middle sections, and remove the bottom section from the tree stand.
- Carefully replace the tree in its box and tape it shut. Do not store tree in a damp area or in an area where the temperature exceeds 100 °F.

⚠ WARNING

- Use only power adapter supplied with this product, using a different adaptor will damage the lights and cause fire, electrical shock hazards.
- FOR INDOOR USE ONLY.

CAUTION

To reduce the risk of fire and electric shock:

- a) Use only the power supply that was provided with this product. Using a different adapter will damage the lights and may cause fire, or electrical shock hazards.
- b) Do not install on trees having needles, leaves or branch coverings of metal or materials which look like metal.
- c) Do not mount or support strings in a manner that can cut or damage wire insulation.

