

## WARRANTY

Krinner warrants this product to be free from defects in material and workmanship at the time of its original purchase by a consumer, and for a subsequent period of 3 years.

## WHAT WE WILL DO

If, during the warranty period, this product fails to operate under normal use and service, due to improper materials or workmanship, Krinner authorized distributors or authorised service partners will, at its option, replace the product in accordance with the terms and conditions stipulated herein.

## CONDITIONS

1. In order to obtain service under this limited warranty, the owner is responsible for shipping and handling fees for replacement stands.
2. The warranty is valid only if the original receipt by the dealer, specifying the date of purchase is presented with the product to be replaced. Krinner reserves the right to refuse warranty services if this information has been removed or changed after the original purchase of the product from the dealer.
3. If Krinner replaces the product, the replaced product shall be warranted for the remaining time of the original warranty period or for ninety (90) days from the date of repair, whichever is longer.
4. This warranty does not cover any failure of the product due to misuse, including but not limited to use in other than the normal and customary manner, in accordance with Krinner's USER INSTRUCTIONS, accident, acts of God and use of unauthorized parts or attachments.
5. This warranty does not cover product failures due to repair installations, modifications or improper service performed by a non Krinner authorized service workshop or opening of the product by non Krinner authorized persons.
6. This warranty is void if the Christmas Tree Genie™ by Krinner is structurally altered.
7. There are no other express warranties, whether written or oral, other than this printed limited warranty. Any and all implied warranties or merchantability or fitness for the prescribed purpose, are limited to the duration of this limited warranty. In no event shall Krinner be liable for incidental or consequential damages of any nature whatsoever, including but not limited to lost profits or commercial loss. To the full extent those damages are disclaimed by law. Some states do not allow the exclusion or limitation of incidental or consequential damage, or limitation of duration of implied warranties, so the preceding limitations or exclusions may not apply to you. This warranty gives you specific legal rights, and you may also have other rights which may vary from state to state.

## TECHNICAL DATA

Technical Data	KRINNER TREE GENIE S
Max tree height	6 Ft. / 2.00 m
Max trunk diameter	4.5" / 11.0 cm
Weight	11.0 lbs / 5.0 kg
Diameter	14.2" / 36.0 cm
Height	3.9" / 10.0 cm
Water capacity	0.9 gal. / 3.5 l
Warranty	3 Years

# KRINNER

*The Better Tree Stand*

## USER INSTRUCTIONS CHRISTMAS TREE GENIE S



### READ BELOW INFORMATION CAREFULLY BEFORE USING THIS CHRISTMAS TREE STAND.

ONLY USE THE KRINNER CHRISTMAS TREE STAND AS IT IS DESCRIBED IN THE FOLLOWING USER INSTRUCTIONS. KRINNER STANDS ARE FOR NATURALLY GROWN TREES ONLY. IT IS NOT A TOY!

TO PREVENT FLOOR DAMAGE DUE TO POSSIBLE LEAKAGE, PLEASE CHECK THE WATER TANK FOR CRACKS AND HOLES YEARLY BEFORE TREE SETUP.

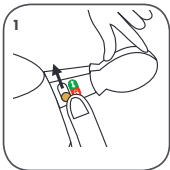
Made in Bavaria, Germany  
[www.krinnerusa.com](http://www.krinnerusa.com)

## SAFETY

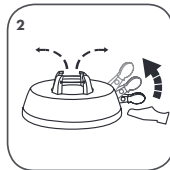


- Do not use the tree stand for any other purpose like sign plates, clothes dryers, flag poles or sunshades etc. KRINNER will not cover any damage done by misuse of this Christmas tree stand. This Christmas tree stand is for indoor use only.
- Before putting up your Christmas tree, ensure that your tree stand has a secure base. A thick carpet is not a secure base! Only use the tree stand on a solid, level and even surface. Uneven or inclined surfaces cause reduced stability and enhance the risk of the tree to fall.
- To prevent possible damage to your carpet or floor, the use of a heavy plastic sheet underneath the Christmas tree stand is recommended.
- To prevent floor damage due to possible leakage, please check water tank for cracks and holes yearly before tree setup. Check the water level indicator for free movement. Use a pointed tool to pull the indicator up and out. Wash with soap if there are sap residues.
- While pushing down the foot pedal with your feet, ensure that there are no hands or other body parts in between the clamps and the trunk as it can cause serious injuries. The Christmas tree stand is not a toy! Do not allow children to operate the tree stand. Make sure they are not near the stand while setting up your tree.
- This Krinner Christmas tree stand is a safety product. Do not alter the construction of the Krinner Christmas tree stand. This will void the warranty. Do not use the stand if it shows any structural damage.
- If electric lighting is used, do not allow this electric lighting to burn unattended. (!) Water is a conductor. Ensure that electric wires are in a safe distance to the water tank of the Christmas tree stand.
- Adding too much water will lead to overflowing and may cause damage to the surface underneath. Strictly follow the instructions under the chapter 'Putting up the tree (6.)'
- A fresh and green Christmas tree reduces the fire hazard. The trunk must have a fresh, clean and even cut to absorb water. Therefore always keep sufficient water in the tree stand.
- Ensure that the tree is securely fastened, well balanced and positioned in the middle of the tree stand before applying decorations and lighting.
- Keep your tree away from fireplaces and open flames.
- For helpful tips and contact go to [www.krinnerusa.com](http://www.krinnerusa.com)

## PUTTING UP THE TREE



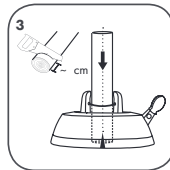
To release the foot pedal, first raise the red lock into the unlock position (green).



Gently lift the foot pedal upwards to open the clamping mechanism. The clamps will spring (!) into a vertical position step by step.



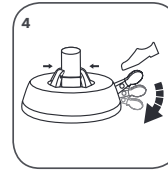
The foot pedal must be lifted with suitable foot wear. To avoid injury do not place any body parts (fingers) in area of the clamps.



Give the trunk a straight and even cut. Set the trunk in the center of the stand over the spike. Make sure the trunk and spike have contact but do not use force. Do not drill a hole into the trunk.



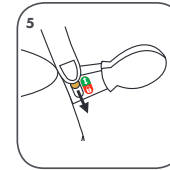
The trunk may not be drilled in the middle. If the cut is inclined or the trunk is drilled, recutting the trunk is necessary. An uneven or inclined cut causes reduced stability and enhances the risk of the tree to fall.



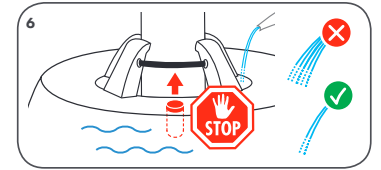
Push down the foot pedal. Repeat pushing until the clamping mechanism securely fastens the trunk.



The foot pedal must be lifted with suitable foot wear. To avoid injury do not place any body parts (fingers) in area of the clamps.



When tree and trunk are well positioned and securely fastened, slide the lock into the red position (locked) to secure the foot pedal.

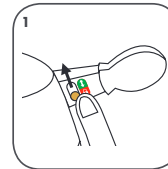


Add tap water to keep your tree fresh. Slowly fill the tank with tap water until the level indicator is clearly visible. Stop adding water. Always keep the inner container filled with tap water.

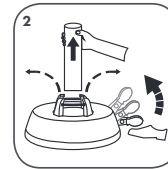


Overfilling can damage the seal and create recurrent leaking, and may cause damage to your floor covering. Please check the water tank for cracks and holes yearly before tree setup.

## TAKING OUT THE TREE



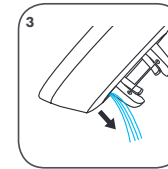
To take out the Christmas tree raise the lock into the unlock position (green).



Hold the tree in an upright position. Lift the foot pedal. The clamps will spring (!) into a vertical position. Now you can take out the Christmas tree.



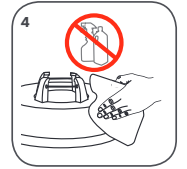
The foot pedal must be lifted with suitable foot wear.



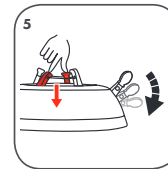
To drain the water, tip the stand towards the level indicator opening into a sink. Wash the stand with a soft sponge and a mild detergent. Rinse thoroughly.



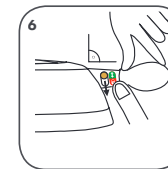
Do not use any chemicals or abrasive cleaners. Dry completely prior to storage.



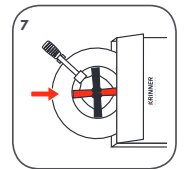
To clean the tree stand use a damp cloth and water.



Repeatedly push down the foot pedal to close the claws. Push 2 claws opposite of each other (5.) lower than the others to fully close the tree stand for storage. Stop pushing when claws are down and pedal is in horizontal position. Hold pedal and bring lock back into secured position (red).



Once locked, you can let go off the pedal. Now it should be in a horizontal position for storage.



Put the stand back in the box provided for this purpose.