

jura[®]



Instructions for use for ENA Micro 90



For your safety: read and understand manual before use.

en

fr

es

pt

Your ENA Micro 90

IMPORTANT SAFEGUARDS	4
Control elements	8
1 Preparing and using for the first time	10
3-color plain text display	10
Setting up the machine.....	10
Filling the bean container	10
First-time use.....	10
First-time use with filter cartridge activation	11
First-time use without filter cartridge activation.....	11
Determining the water hardness.....	12
Connecting milk.....	13
2 Preparation	13
Espresso, coffee.....	14
Latte macchiato, cappuccino.....	14
Milk foam	14
Ground coffee.....	14
Permanently setting the amount of water for the cup size.....	15
Adjusting the grinder.....	15
Hot water.....	16
3 Daily operation	16
Filling the water tank	16
Switching on the machine	16
Daily maintenance.....	16
Regular maintenance.....	16
Switching off the machine	17
4 Permanent settings in programming mode	17
Products	17
Setting the water hardness.....	18
Automatic switch-off.....	18
Unit for amount of water	18
Language.....	19
5 Maintenance	19
Rinsing the machine	20
Rinsing the milk system	20
Cleaning the milk system.....	20
Dismantling and rinsing the dual spout.....	21
Inserting and activating the filter	22
Changing the filter.....	23
Cleaning the machine.....	23
Descaling the machine	24
Descaling the water tank.....	26
Cleaning the bean container	26

6	Display messages	27
7	Troubleshooting	28
8	Transport and environmentally friendly disposal	29
	Transport / Emptying the system	29
	Disposal	29
9	Technical data	29
10	Index	30
11	JURA contact details / Legal information	32

Symbol description

Warnings



This is the safety alert symbol. It is used to alert you to potential personal injury hazards. Obey all safety messages that follow this symbol to avoid possible injury or death.



DANGER indicates a hazardous situation which, if not avoided, will result in death or serious injury.



WARNING indicates a hazardous situation which, if not avoided, could result in death or serious injury.



CAUTION, used with the safety alert symbol, indicates a hazardous situation which, if not avoided, could result in minor or moderate injury.



NOTICE is used to address practices not related to personal injury.

Symbols used



Prompt to take action. This symbol means that you are being prompted to perform some action.



Information and tips to make it even easier to use your ENA..



Display message

en

IMPORTANT SAFEGUARDS

Follow the basic safety precautions

When using electrical appliances, basic safety precautions shall always be followed, to reduce the risk of fire, electric shock, and/or injury to persons, including the following:

- Read all instructions.
- Do not touch hot surfaces. Use handles or knobs.
- To protect against fire, electric shock and injury to persons, do not immerse power cord, plugs, or body of machine in water or other liquid.
- Close supervision is necessary when any appliance is used by or near children.
- Unplug from outlet when not in use and before cleaning. Allow to cool before putting on or taking off parts, and before cleaning the appliance.
- Do not operate any appliance with a damaged cord or plug or after the appliance malfunctions, or has been damaged in any manner. Return appliance to the nearest authorized service facility for examination, repair or adjustment.
- The use of an accessory attachment not recommended by the appliance manufacturer may result in fire, electric shock, or injury to persons.
- Do not use outdoors.
- Do not let the cord hang over the edge of a table or counter, or touch hot surfaces.
- Do not place on or near a hot gas or electric burner, or in a heated oven.
- To disconnect, turn any control to 'OFF' then remove plug from wall outlet.
- Do not use appliance for other than intended use.
- Use extreme caution when dispensing hot steam, hot water or hot coffee.
- For household use only.

SAVE THESE INSTRUCTIONS.

Pass them on to any subsequent user.

Intended use The appliance is designed and intended for household use only. It shall only be used for coffee preparation, according to these instructions. Use for any other purpose will be deemed improper. JURA Elektroapparate AG cannot accept any responsibility for the consequences of improper use.

People, including children, who

- do not have the physical, sensory or mental capabilities to use the appliance safely or
- are inexperienced or lack knowledge in how to use the appliance safely

must be supervised by a responsible person when using it, or must be instructed in how to use it correctly.

Special power cord set instructions

- The power cord is provided to reduce the risk resulting from becoming entangled in or tripping over a long cord.
- The cord shall be arranged so that it will not drape over the counter top or table top where it can be pulled on by children or tripped over.
- This appliance has a 3-pin grounded plug.
- Do not modify the plug in any way.

Do NOT use extension cords.

If the user chooses to use an extension cord,

- the marked electrical rating of the extension cord shall be at least as great as the electrical rating of the appliance, and
- if the appliance is of the grounded type, the extension cord shall be a grounding type 3-wire cord, and
- the longer cord shall be arranged so that it will not drape over the counter top or tabletop where it can be pulled on by children or tripped over.



To reduce the risk of fire or electric shock, DO NOT remove any service covers. DO NOT modify the appliance in any way that is not described in these instructions. NO user serviceable parts included. Repair MUST be done by authorized personnel only.

In the event of signs of damage, for example if there is a smell of burning, unplug the machine immediately from outlet and contact JURA customer service.

en

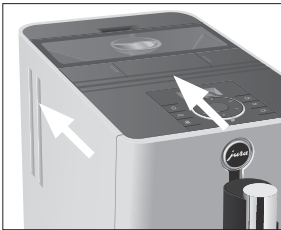
IMPORTANT SAFEGUARDS

⚠ CAUTION

This appliance is for household use. Any servicing other than cleaning and user maintenance shall be performed by an authorized service representative:

- Do not immerse base in water or try to disassemble.
- Do not put the appliance or any individual parts in the dishwasher.
- Check voltage to be sure that the voltage indicated on the name plate complies with your voltage. The name plate is located on the underside of the appliance.
- Never use warm or hot water to fill the water container. Use cold water only.
- Keep your hands and the cord away from hot parts of the appliance during operation.

NOTICE



- Never clean with scouring powders or hard implements.
- Ensure that the ventilation slots are not covered.
- Never pull out the drip tray during the brewing process. Only pull the drip tray when the display instructs you or when the appliance is ready for use.

NEVER DO (or you will void your warranty protection):

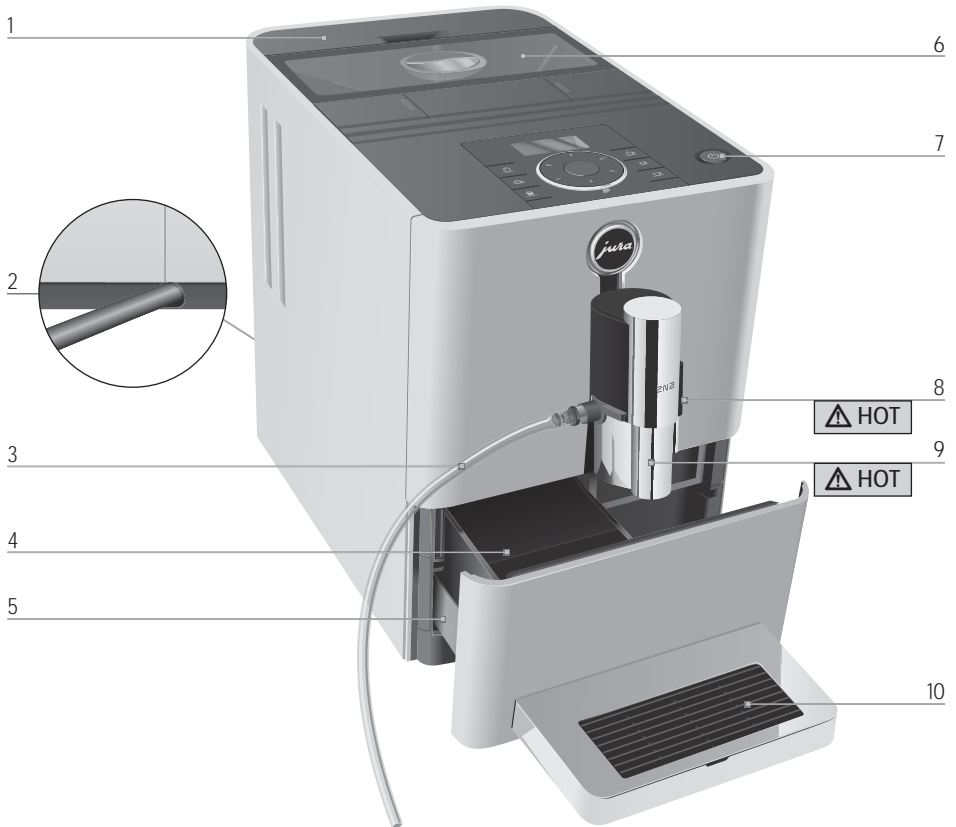
- Never fill instant coffee, chocolate mix etc. into the bean container or ground coffee funnel (filler funnel for ground coffee). It will damage the functioning of the brewing chamber.
- Never fill sugar coated coffee beans into the bean container. In case of doubt, call your dealer.
- Never fill anything other than coffee beans into the bean container (no chocolate, no rice, no nuts, no spices, nothing other than roasted coffee beans).
- Never fill frozen beans into the bean container. If you store beans in the freezer, let them thaw 3 to 4 hours before filling them into the bean container.
- Never fill anything but fresh, cold and clean water into the water tank, except when decalcifying.
- Never use mineral or carbonated water. You can use tap water, bottled water, spring water and reverse osmosis water.
- Never do anything with the machine which is not described in these instructions. In case of doubt, call your dealer.

- intentionally blank -


en

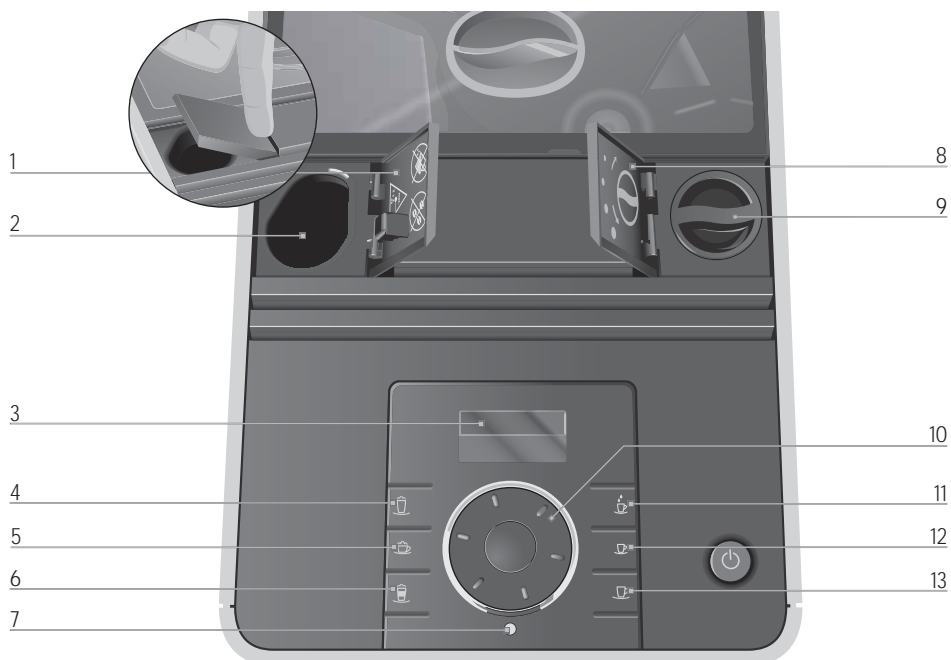
Control elements




Control elements






- 1 Water tank
- 2 Power cord (back of the machine)
- 3 Milk pipe
- 4 Coffee grounds container
- 5 Drip tray

- 6 Bean container with aroma preservation cover
- 7  On/Off button
- 8 Hot-water spout
- 9 Height-adjustable dual spout
- 10 Cup platform

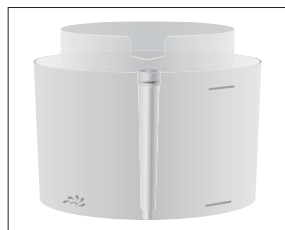


- 1 Cover for powder chute for ground coffee
- 2 Powder chute for ground coffee
- 3 Display
- 4  Milk Foam button
- 5  Cappuccino button
- 6  Latte Macchiato button
- 7 Rotary Switch status display

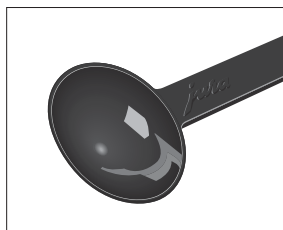
- 8 Cover cap for grinder adjustment switch
- 9 Grinder adjustment switch
- 10 Rotary Switch
- 11  Hot Water button
- 12  Espresso button
- 13  Coffee button

Accessories

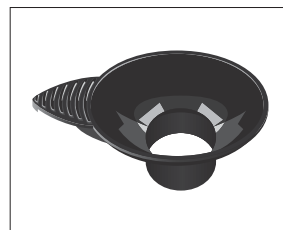
Container for milk system cleaning



Measuring spoon for ground coffee



Filler funnel for ground coffee



1 Preparing and using for the first time

1 Preparing and using for the first time

3-color plain text display

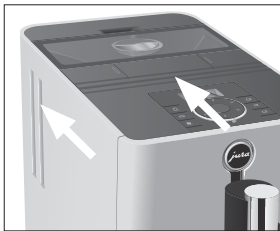
Your ENA features a 3-color plain text display. The colors of the display texts have the following meanings:

- Green: The ENA is ready for use.
- Red: The ENA is prompting you to perform some action.
- Yellow: You are in programming mode.

Setting up the machine

When setting up your ENA, please note the following:

- Place the ENA on a horizontal surface that is not sensitive to water.
- Choose a spot for your ENA which protects the machine against overheating. Ensure that the ventilation slots are not covered.



Filling the bean container

NOTICE

Coffee beans which have been treated with additives (e.g. sugar), ground coffee or freeze-dried coffee will damage the grinder.

- ▶ Only use untreated roasted coffee beans to refill the bean container.
- ▶ Remove the aroma preservation cover of the bean container.
- ▶ Remove any dirt or foreign objects from inside the bean container.

- ▶ Fill the bean container with coffee beans.
- ▶ Close the bean container.

First-time use

When using the machine for the first time, you can choose whether you want to operate ENA **with** or **without** the CLEARYL Blue filter cartridge. If the water hardness is 10 °dH or more, we recommend using the filter cartridge. If you do not know the hardness of your water, you can find this out first (see Chapter 1 'Preparing and using for the first time – Determining the water hardness').


⚠ WARNING

If the machine is operated with a defective power cord, there is a danger of potentially fatal electric shock.

- ▶ Never use a machine which is damaged.
- ▶ Never use a machine which has a defective power cord.

- i** The water volume is given as standard in **oz.** You can change this setting to **ml.** in programming mode (see Chapter 4 'Permanent settings in programming mode – Unit for amount of water').

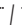

Precondition: The bean container has been filled.

- ▶ Insert the power plug into a power socket.
- ▶ Press the On/Off button  to switch the machine on.

LANGUAGE ENGLISH

- ▶ Press the Rotary Switch to confirm the language setting.



OK, the language is now set.
FILTER  / YES 

- i** Now decide whether you want to operate your ENA **with** or **without** a CLEARLY Blue filter cartridge.

First-time use with filter cartridge activation

- ▶ Press the Rotary Switch.
OK
INSERT FILTER
- ▶ Remove the water tank.
- ▶ Open the filter holder.
- ▶ Insert the filter cartridge into the water tank, exerting slight pressure.



- ▶ Close the filter holder. It will click into place audibly.

- i** After two months, the filter will cease to work. Set the date on the date plate on the filter holder in the water tank.

- ▶ Fill the water tank with fresh, cold water and reinsert it.
INSERT FILTER
- ▶ Place a receptacle (at least 17 oz or 500 ml) under the hot-water and dual spout.



- ▶ Press the Rotary Switch.
FILTER RINSING, water flows out of the hot-water spout.

- i** You can interrupt rinsing of the filter at any time by pressing any button. Press the Rotary Switch to continue rinsing of the filter.

- i** The water may be slightly discolored. This is not harmful to health and does not affect the taste.

Rinsing of the filter stops automatically.

SYSTEM FILLING, water flows out of the dual spout.
HEATING
READY

First-time use without filter cartridge activation

- ▶ Turn the Rotary Switch until FILTER — / NO — is displayed.

- ▶ Press the Rotary Switch.

OK
15° FH

- ▶ Turn the Rotary Switch to change the water hardness setting, e.g. to 25° FH.

- ▶ Press the Rotary Switch.

OK
FILL WATER TANK

- ▶ Remove the water tank.



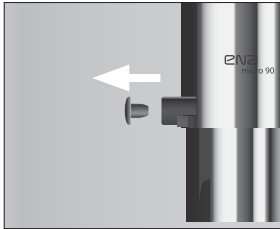
- ▶ Fill the water tank with fresh, cold water and reinsert it.

PRESS ROTARY

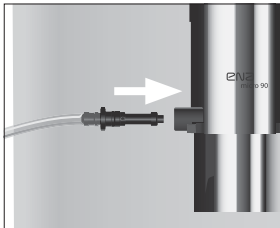
Connecting milk

Your ENA creates fine, creamy, feather-light milk foam with a perfect consistency. The most important requirement for frothing milk is a milk temperature of 39–46 °F (4–8 °C). We would therefore recommend using a milk cooler (e.g. the Cool Control Basic) or a vacuum milk container.

- ▶ Remove the protective cover of the dual spout.



- ▶ Connect the milk pipe to the dual spout.



- ▶ Connect the other end of the milk pipe to a milk container or immerse it in a milk carton.

- i** Ensure that the filling height of the milk is **no higher** than the milk pipe connection on the dual spout.

2 Preparation

⚠ WARNING

Hot Coffee can cause scalding. Scalding is a serious burn.

- ▶ Use extreme care when handling hot liquid.
- ▶ Allow liquid to cool down before drinking.
- ▶ In the event of scalding, rinse affected area with cold water and seek medical attention.
- ▶ Keep children AWAY.

- i** You can interrupt preparation at any time while a specialty coffee, specialty coffee with milk or hot water is being prepared. Just press any button.
- i** Before and during the grinding operation you can change the **coffee strength** of espresso ☞, coffee ☞, cappuccino ☞ and latte macchiato ☞ by turning the Rotary Switch.
- i** During preparation, you can change the preset **amounts** (e.g. amount of milk foam or water) by turning the Rotary Switch.
- i** You can follow the current status of preparation on the progress bar.
- i** The water volume is given as standard in ☞. You can change this setting to ☞ in programming mode (see Chapter 4 'Permanent settings in programming mode – Unit for amount of water').

Coffee tastes best served hot. A cold porcelain cup cools the beverage – and impairs the taste. We therefore recommend prewarming the cups. The full coffee aroma can develop only in prewarmed cups. You can purchase a JURA cup warmer from your specialized dealer.

You can make permanent settings for all products in programming mode (see Chapter 4 'Permanent settings in programming mode – Products').

2 Preparation

Espresso, coffee

Preparation of espresso ☞ and coffee ☞ follows this model.

Example: Proceed as follows to prepare one coffee.

Precondition: READY is displayed.

- ▶ Place a cup under the dual spout.
- ☞ ▶ Press the Coffee button to start preparation. COFFEE, the preset amount of water flows into the cup. Preparation stops automatically. READY

Latte macchiato, cappuccino

Your ENA can prepare a latte macchiato or cappuccino at the touch of a button. There is no need to move the glass or cup.

Latte macchiato ☞ and cappuccino ☞ are prepared following this model.

Example: Proceed as follows to prepare one latte macchiato.

Precondition: READY is displayed. Milk is connected to the dual spout.

- ▶ Place a glass under the dual spout.
- ☞ ▶ Press the Latte Macchiato button. LATTE MAC., the milk foam is prepared. Preparation stops automatically when the preset amount of milk is reached. PAUSE

- i** There is a short interval while the hot milk separates from the milk foam. This allows the typical layers of a latte macchiato to form. You can choose the length of this interval in programming mode (see Chapter 4 'Permanent settings in programming mode – Products').

LATTE MAC., coffee preparation starts. The preset amount of water flows into the glass. Preparation stops automatically. READY / M-RINSE

Milk foam

Precondition: READY is displayed. Milk is connected to the dual spout.

- ▶ Place a cup under the dual spout.
- ☞ ▶ Press the Milk Foam button. MILK, the milk foam is prepared. Preparation stops automatically when the preset amount of milk is reached. READY / M-RINSE

Ground coffee

You can choose to use a second coffee variety, for example decaffeinated coffee, with the powder chute for ground coffee.

- i** Never add more than one level measuring spoon of ground coffee.
- i** Use ground coffee which is not ground too finely. Very fine coffee can block up the system so that the coffee only comes out in drips.
- i** If you did not fill the machine with a sufficient amount of ground coffee, NOT ENOUGH POWDER is displayed and the ENA stops the operation.
- i** The desired specialty coffee must be prepared within approximately one minute after filling with the ground coffee. Otherwise the ENA stops the operation and is once more ready for use.

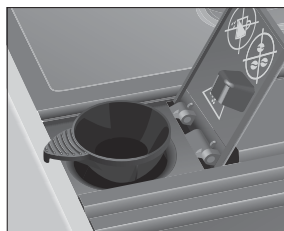
The preparation of coffee, espresso, cappuccino and latte macchiato with ground coffee follows this model.

Example: Prepare a cup of coffee using ground coffee.

Precondition: READY is displayed.

- ▶ Place a cup under the dual spout.
- ▶ Open the powder chute for ground coffee. FILL POWDER

- ▶ Place the filler funnel for ground coffee on the powder chute.



- ▶ Place one level measuring spoon of ground coffee into the filler funnel.
- ▶ Close the powder chute for ground coffee.

SELECT BUTTON

- ▶ Press the Coffee button to start preparation. COFFEE, the preset amount of water flows into the cup. Preparation stops automatically. READY

Permanently setting the amount of water for the cup size

It is easy to make permanent settings for the amount of water for all specialty coffees and hot water according to the cup size. Adjust the amount once as shown in the following example. Every time you prepare a drink in the future, this amount will be dispensed.

Example: Permanently adjust the amount of cappuccino to the cup size.

Precondition: READY is displayed. Milk is connected to the dual spout.

- ▶ Place a cup under the dual spout.
- ▶ **Press and hold** the Cappuccino button until ENOUGH MILK? appears.
- ▶ **Release** the Cappuccino button. The milk foam is prepared.
- ▶ Press any button as soon as there is sufficient milk foam in the cup. OK
- ▶ ENOUGH COFFEE?, the coffee flows into the cup.

- ▶ Press any button as soon as there is sufficient coffee in the cup. OK, CAPPUCCINO, the set amounts for one cappuccino are permanently stored. READY

- ▶ You can alter this setting at any time by repeating the above procedure.

Adjusting the grinder

You can adjust the grinder on a continuous scale to suit the degree of roast of your coffee.

NOTICE

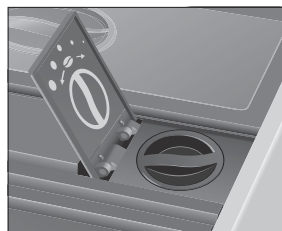
If you adjust the consistency of grind when the grinder is not operating, the grinder adjustment switch could be damaged.

- ▶ Only adjust the consistency of grind when the grinder is running.

The consistency of grind is correct if the coffee flows regularly from the dual spout. In addition a fine, thick crema forms.

Example: Change the consistency of grind during the preparation of an espresso.

- ▶ Place a cup under the dual spout.
- ▶ Open the cover cap of the grinder adjustment switch.



- ▶ Press the Espresso button to start preparation.
- ▶ Turn the grinder adjustment switch to the desired position while the grinder is running. The preset amount of water flows into the cup. Preparation stops automatically. READY

3 Daily operation


Hot water

⚠ CAUTION

There is a danger of scalding from hot water splashes.

- ▶ Avoid direct contact with the skin.
-

Precondition: READY is displayed.

- ▶ Place a cup under the hot-water spout.
-  ▶ Press the Hot Water button.
WATER, the preset amount of water flows into the cup.
Preparation stops automatically.
READY

3 Daily operation

Filling the water tank

Daily maintenance of the machine and hygiene when handling milk, coffee and water are key to a perfect coffee result in the cup every time. You should therefore change the water **daily**.

NOTICE


Milk, sparkling mineral water or other liquids can damage the water tank or the machine.

- ▶ Only fill the water tank with fresh, cold water.
- ▶ Remove the water tank and rinse with cold water.



- ▶ Fill the water tank with fresh, cold water and reinsert it.

Switching on the machine

- ▶ Place a receptacle under the dual spout.
-  ▶ Press the On/Off button to switch the machine on.
RINSING, the system rinses itself. The operation stops automatically.
READY

Daily maintenance

To ensure that you get many years of reliable service out of your ENA and to guarantee the optimum coffee quality, the machine requires daily maintenance.

- ▶ Remove the drip tray.
- ▶ Empty the coffee grounds container and drip tray and rinse with warm water.
- i** Always empty the coffee grounds container when the machine is **switched on**. This is the only way of resetting the coffee grounds counter.
- ▶ Reinsert the coffee grounds container and the drip tray.
- ▶ Rinse the water tank with clean water.
- ▶ Dismantle and rinse the dual spout (see Chapter 5 'Maintenance – Dismantling and rinsing the dual spout').
- ▶ Wipe the surface of the machine with a clean, soft, damp cloth (e.g. microfiber cloth).

Regular maintenance

Carry out the following maintenance actions **regularly** or **as required**:

- In the interests of hygiene, we recommend changing the milk pipe and interchangeable milk spout on a regular basis (approximately every 3 months). Replacements are available from specialized dealers.
- Clean the inside of the water tank, e.g. with a brush. Further information about the water tank is provided in these instructions for use

(see Chapter 5 ‘Maintenance – Descaling the water tank’).

- Traces of milk and coffee may stick to the top and bottom of the cup platform. If this happens, clean the cup platform.

Switching off the machine

When the ENA is switched off, the system is automatically rinsed if a specialty coffee has been prepared. If milk has been prepared, you will also be prompted to clean the milk system.

Precondition: READY is displayed.

- ▶ Place a receptacle under the dual spout.
- ▶ Press the On/Off button to switch the machine off.

- i** If milk has been prepared, you will be prompted to clean the milk system (M-CLEAN / START ?). After 10 seconds the switch-off process continues automatically.

RINSING, the system rinses itself. The operation stops automatically. Your ENA is switched off.

4 Permanent settings in programming mode

Products

⚠ WARNING

Hot coffee, hot steam and hot water can cause scalding. Scalding is a serious burn.

- ▶ Use extreme care when handling hot liquid or steam.
- ▶ Allow liquid to cool down before drinking.
- ▶ In the event of scalding, rinse affected area with cold water and seek medical attention.
- ▶ Keep children AWAY.

You can make the following permanent settings:

- **Espresso**
 - Amount of water: 0.5 OZ – 2.5 OZ (15 ml – 80 ml)
 - Coffee strength: 10 levels
 - Temperature: NORMAL, HIGH
- **Coffee**
 - Amount of water: 0.5 OZ – 8.0 OZ (25 ml – 240 ml)
 - Coffee strength: 10 levels
 - Temperature: NORMAL, HIGH
- **Latte macchiato and cappuccino**
 - Amount of milk foam: 3 SEC – 120 SEC
 - Interval: 0 SEC – 60 SEC
 - Coffee strength: 10 levels
 - Amount of water: 0.5 OZ – 8.0 OZ (25 ml – 240 ml)
 - Temperature: NORMAL, HIGH
- **Milk foam**
 - Amount of milk foam: 3 SEC – 120 SEC
- **Hot water**
 - Amount of water: 0.5 OZ – 15.0 OZ (25 ml – 450 ml)

Permanent settings in programming mode always follow the same model.

Example: Permanently change the coffee strength (FLAVOUR) of an espresso.

Precondition: READY is displayed.

- ▶ **Press and hold** the Rotary Switch until RINSE appears.
- ▶ Turn the Rotary Switch until PRODUCT is displayed.
- ▶ Press the Rotary Switch to enter the program item.
SELECT BUTTON

- i** Next select the button of the product for which you would like to make settings. No product is prepared at this point.

- ▶ Press the Espresso button.
ESPRESSO
WATER

en

4 Permanent settings in programming mode

- ▶ Turn the Rotary Switch until **FLAVOUR** is displayed.
- ▶ Press the Rotary Switch to enter the program item.
FLAVOUR (Example)
- ▶ Turn the Rotary Switch to change the setting.
- ▶ Press the Rotary Switch to confirm the setting.
OK, the coffee strength is now set.
FLAVOUR
- ▶ Turn the Rotary Switch until **EXIT** is displayed.
- ▶ Press the Rotary Switch to exit the program item.
PRODUCT
- ▶ Turn the Rotary Switch until **EXIT** is displayed.
- ▶ Press the Rotary Switch to exit programming mode.
READY

Setting the water hardness

- i** If you are using the **CLEARYL Blue** filter cartridge and have activated it in programming mode, you will not be able to adjust the water hardness.

The harder the water is, the more frequently the ENA needs to be descaled. It is therefore important to set the water hardness accurately.

The water hardness can be adjusted on a continuous scale between 1 °dH and 30 °dH.

Precondition: **READY** is displayed.

- ▶ **Press and hold** the Rotary Switch until **RINSE** appears.
- ▶ Turn the Rotary Switch until **HARDNESS** is displayed.
- ▶ Press the Rotary Switch to enter the program item.
16 °dH (Example)
- ▶ Turn the Rotary Switch to change the setting.

- ▶ Press the Rotary Switch to confirm the setting.
OK, the water hardness is now set.
HARDNESS
- ▶ Turn the Rotary Switch until **EXIT** is displayed.
- ▶ Press the Rotary Switch to exit programming mode.
READY

Automatic switch-off

By instructing your ENA to automatically switch itself off, you can cut down your energy consumption. If this function is activated, your ENA switches off automatically after the preset time following the last action on the machine.

The automatic switch-off can be set to between 15 minutes and 9 hours.

Precondition: **READY** is displayed.

- ▶ **Press and hold** the Rotary Switch until **RINSE** appears.
- ▶ Turn the Rotary Switch until **OFF AFTER** is displayed.
- ▶ Press the Rotary Switch to enter the program item.
2 HRS (Example)
- ▶ Turn the Rotary Switch to change the setting.
- ▶ Press the Rotary Switch to confirm the setting.
OK, the switch-off time is now set.
OFF AFTER
- ▶ Turn the Rotary Switch until **EXIT** is displayed.
- ▶ Press the Rotary Switch to exit programming mode.
READY

Unit for amount of water

You can change the unit for the amount of water from 'oz' to 'ml'.

Precondition: READY is displayed.

- ▶ **Press and hold** the Rotary Switch until RINSE appears.
- ▶ Turn the Rotary Switch until DISPLAY is displayed.
- ▶ Press the Rotary Switch to enter the program item.
OZ (Example)
- ▶ Turn the Rotary Switch to change the setting.
- ▶ Press the Rotary Switch to confirm the setting.
OK, the unit for the amount of water is now set.
DISPLAY
- ▶ Turn the Rotary Switch until EXIT is displayed.
- ▶ Press the Rotary Switch to exit programming mode.
READY

Language

In this program item you can set the language used by your ENA.

Example: Change the language from ENGLISH to DEUTSCH.

Precondition: READY is displayed.

- ▶ **Press and hold** the Rotary Switch until RINSE appears.
- ▶ Turn the Rotary Switch until LANGUAGE is displayed.
- ▶ Press the Rotary Switch to enter the program item.
ENGLISH
- ▶ Turn the Rotary Switch until DEUTSCH is displayed.
- ▶ Press the Rotary Switch to confirm the setting.
OK, the language is now set.
SPRACHE
- ▶ Turn the Rotary Switch until EXIT is displayed.

- ▶ Press the Rotary Switch to exit programming mode.

BEREIT

5 Maintenance

WARNING

Use of maintenance products that are harmful to health and discharge of liquids during maintenance program. Harmful if swallowed.

Irritating to eyes and skin.

- ▶ Keep children AWAY.
- ▶ Keep children away from the machine while it is performing a maintenance program.
- ▶ Avoid contact with skin and eyes.
- ▶ Avoid generation of dust. Do not inhale dust.
- ▶ When using do not eat or drink.
- ▶ Keep maintenance products away from food, drink and animal food.
- ▶ Keep container tightly closed and dry. Keep in a cool place.

Your ENA has the following integrated maintenance programs:

- Rinsing the machine (RINSE)
- Rinsing the milk system in the dual spout (M-RINSE)
- Cleaning the milk system in the dual spout (M-CLEAN)
- Changing the filter (FILTER) (only if filter is activated)
- Cleaning the machine (CLEAN)
- Descaling the machine (DE-SCALE)

i Clean or descale the machine, rinse the milk system or change the filter when you are prompted to do so.

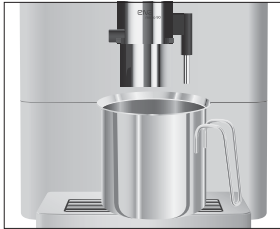
i In the interests of hygiene, you should clean the milk system **daily** when you have been preparing milk.

i You can start the maintenance programs at any time in programming mode (program item RINSE).

Rinsing the machine

Precondition: READY is displayed.

- ▶ Place a receptacle under the dual spout.



- ▶ **Press and hold** the Rotary Switch until RINSE appears.
- ▶ Press the Rotary Switch to enter the program item.
M-CLEAN
- ▶ Turn the Rotary Switch until RINSE is displayed.
- ▶ Press the Rotary Switch to initiate the rinse operation.
RINSING, the system rinses itself. The operation stops automatically.
READY

Rinsing the milk system

After each milk preparation, the ENA prompts you to perform a milk system rinse.

Precondition: READY / M-RINSE is displayed.

- ▶ Place a receptacle under the dual spout.



- ▶ Press the Rotary Switch to start milk system rinsing.
RINSING, the milk system is rinsed. The rinse stops automatically. READY appears on the display.

Cleaning the milk system

To ensure that the milk system in the dual spout always works properly, you must clean it **daily** when you have been preparing milk.

⚠ WARNING

Non-recommended cleaning agents will not optimally remove milk residues. This may cause the cappuccino frother to become blocked and fly off the machine. Discharge of hot steam.

- ▶ Use only original JURA milk system cleaner.

⚠ WARNING

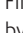
Harmful and irritating cleaning agent. Harmful if swallowed. Irritating to eyes and skin.

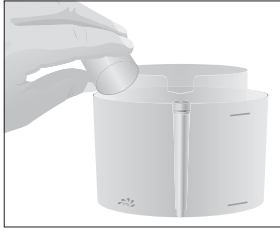
- ▶ Keep children AWAY.
- ▶ Avoid contact with skin and eyes.
- ▶ After contact with skin, wash immediately with plenty of water. In case of skin irritation, seek medical advice.
- ▶ After eye contact, immediately flush eyes with plenty of water and seek medical advice.
- ▶ If swallowed, rinse mouth immediately and drink large quantities of water. Do not induce vomiting. Seek medical advice immediately and show label.

i JURA milk system cleaner is available from specialized dealers.

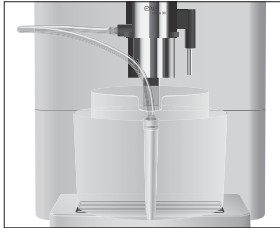
i To clean the milk system, use the container supplied.

- ▶ **Press and hold** the Rotary Switch until RINSE appears.
- ▶ Press the Rotary Switch to enter the program item.
M-CLEAN
- ▶ Press the Rotary Switch to start milk system cleaning.
AGENT FOR M-CLEAN
- ▶ Remove the milk pipe from the milk container or carton.

- ▶ Fill the front part of the container (indicated by ) with 8.5 oz (250 ml) fresh water and 1 capful of milk system cleaner.



- ▶ Place the container under the dual spout.
- ▶ Connect the milk pipe to the container.

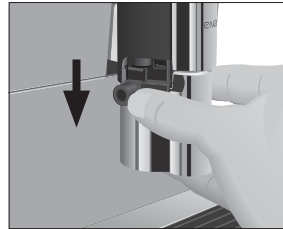


- i** To connect the milk pipe to the container correctly, the pipe must be fitted with a connector.
- ▶ Press the Rotary Switch. **CLEANING**, the milk system and the pipe are cleaned. The operation is interrupted, **WATER FOR M-CLEAN**.
 - ▶ Rinse the container thoroughly and fill the front part with 8.5 oz (250 ml) fresh water.
 - ▶ Place the container under the dual spout and connect the milk pipe with the container again.
 - ▶ Press the Rotary Switch. **CLEANING**, the milk system and the pipe are rinsed with fresh water. The operation stops automatically. **READY**

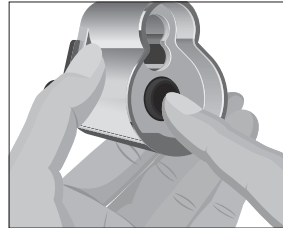
Dismantling and rinsing the dual spout

The dual spout must be dismantled and rinsed **daily** if milk has been prepared to make sure it functions perfectly and also in the interests of hygiene.

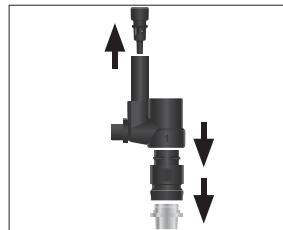
- ▶ Remove the milk pipe and rinse thoroughly under running water.
- ▶ Press the releasing devices and pull the dual spout down and off.



- ▶ Push the milk system down and remove it.



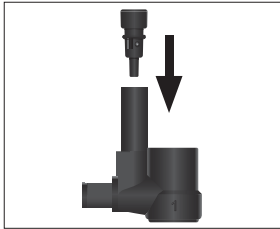
- ▶ Dismantle the milk system into its individual parts.



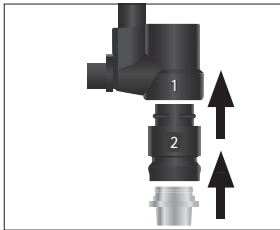
- ▶ Rinse all parts under running water. If a lot of milk residue has dried on, first soak the individual parts in a solution of 8.5 oz (250 ml) of cold water and 1 capful of JURA milk system cleaner and then rinse thoroughly.

5 Maintenance

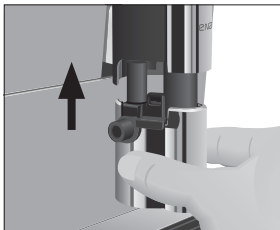
- ▶ Fit the air intake pipe.



- ▶ Reassemble the milk system, noting the numbering on the parts.



- ▶ Insert the assembled individual parts into the dual spout and press them together. They will click into place audibly.
- ▶ Fit the dual spout on the machine. It will click into place audibly.



Inserting and activating the filter

Your ENA no longer has to be descaled if you are using the CLEARYL Blue filter cartridge. If you did not activate the filter cartridge the first time you used the machine, you can do this now as follows.

- i** Perform the ‘inserting the filter’ operation without any interruptions. This will ensure that your ENA always produces its best.

Precondition: READY is displayed.

- ▶ **Press and hold** the Rotary Switch until RINSE appears.
- ▶ Turn the Rotary Switch until FILTER — is displayed.
- ▶ Press the Rotary Switch to enter the program item.

NO —

- ▶ Turn the Rotary Switch until YES ✓ is displayed.
- ▶ Press the Rotary Switch to confirm the setting.

OK

INSERT FILTER

- ▶ Remove and empty the water tank.
- ▶ Open the filter holder.
- ▶ Insert the filter cartridge into the water tank, exerting slight pressure.



- ▶ Close the filter holder. It will click into place audibly.

- i** After two months, the filter will cease to work. Set the date on the date plate on the filter holder in the water tank.

- ▶ Fill the water tank with fresh, cold water and reinsert it.
- ▶ Place a receptacle (at least 17 oz or 500 ml) under the hot-water spout.



- ▶ Press the Rotary Switch.
FILTER RINSING, water flows out of the hot-water spout.

- i** You can interrupt rinsing of the filter at any time by pressing any button. Press the Rotary Switch to continue rinsing of the filter.
- i** The water may be slightly discolored. This is not harmful to health and does not affect the taste.

Rinsing of the filter stops automatically.

HEATING
READY

The filter is now activated.

Changing the filter

- i** After 2000 oz (60 liters) of water have flowed through, the filter will cease to work. Your ENA will automatically prompt you to change the filter.
- i** After two months, the filter will cease to work. Set the date on the date plate on the filter holder in the water tank.
- i** If the CLEARLY Blue filter cartridge is not activated in programming mode, you will not be prompted to change the filter.

Precondition: FILTER / READY is displayed.

- ▶ Press the Rotary Switch.
INSERT FILTER
- ▶ Remove and empty the water tank.
- ▶ Open the filter holder and remove the old filter cartridge.
- ▶ Insert a new filter cartridge into the water tank, exerting slight pressure.



- ▶ Close the filter holder. It will click into place audibly.
- ▶ Fill the water tank with fresh, cold water and reinsert it.
- ▶ Place a receptacle (at least 17 oz or 500 ml) under the hot-water spout.



- ▶ Press the Rotary Switch.
FILTER RINSING, water flows out of the hot-water spout.

- i** You can interrupt rinsing of the filter at any time by pressing any button. Press the Rotary Switch to continue rinsing of the filter.
- i** The water may be slightly discolored. This is not harmful to health and does not affect the taste.

Rinsing of the filter stops automatically.

HEATING
READY

Cleaning the machine

After 180 preparations or 80 switch-on rinses, the ENA will prompt you to clean it.

⚠ WARNING

Non-recommended (e.g. liquid) cleaning agents may contain substances that could damage the machine or leave residues.

- ▶ Use only original JURA cleaning tablets. These are specially formulated for your machine.

⚠ WARNING

Harmful and irritating cleaning agent. Harmful if swallowed. Irritating to eyes and skin.

- ▶ Keep children AWAY.
- ▶ Avoid contact with skin and eyes.
- ▶ Avoid generation of dust. Do not inhale dust.
- ▶ After contact with skin, wash immediately with plenty of water. In case of skin irritation, seek medical advice.
- ▶ After eye contact, immediately flush eyes with plenty of water and seek medical advice.
- ▶ If swallowed, rinse mouth immediately and drink large quantities of water. Do not induce vomiting. Seek medical advice immediately and show label.

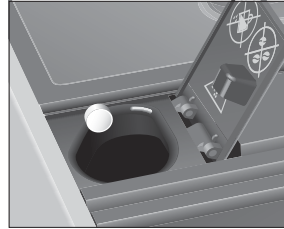
- i** The cleaning program lasts approximately 15 minutes.
- i** Do not interrupt the cleaning program. The quality of cleaning will be impaired if you do so.
- i** JURA cleaning tablets are available from specialized dealers.

Precondition: CLEAN / READY is displayed.

- ▶ Press the Rotary Switch.
EMPTY TRAY
- ▶ Empty the drip tray and coffee grounds container and reinsert them.
PRESS ROTARY
- ▶ Place a receptacle under the dual spout.



- ▶ Press the Rotary Switch.
CLEANING, water flows out of the dual spout.
The operation is interrupted, ADD TABLET.
- ▶ Open the powder chute for ground coffee and drop in a JURA cleaning tablet.



- ▶ Close the powder chute for ground coffee.
PRESS ROTARY
- ▶ Press the Rotary Switch.
CLEANING, water flows out of the dual spout repeatedly.
EMPTY TRAY
- ▶ Empty the drip tray and coffee grounds container and reinsert them.
READY

Descaling the machine

The ENA builds up deposits of limescale over time and automatically prompts you to descale it when necessary. The degree of calcification depends on the hardness of your water.

- i** If you use a CLEARYL Blue filter cartridge and this is activated, you will not be prompted to descale.

⚠ WARNING

Non-recommended descaling agents (e.g. vinegar) may contain substances that could damage the machine or leave residues.

- ▶ Use only original JURA descaling tablets. These are specially formulated for your machine.

⚠ WARNING

Harmful and irritating descaling agent. Harmful if swallowed. Irritating to eyes and skin.

- ▶ Keep children **AWAY**.
- ▶ Avoid contact with skin and eyes.
- ▶ Avoid generation of dust. Do not inhale dust.
- ▶ After contact with skin, wash immediately with plenty of water. In case of skin irritation, seek medical advice.
- ▶ After eye contact, immediately flush eyes with plenty of water. Remove contact lenses. Seek medical advice.
- ▶ If swallowed, rinse mouth immediately and drink large quantities of water. Do not induce vomiting. Seek medical advice immediately and show label.

NOTICE

If the descaling operation is interrupted, there may be damage to the machine.

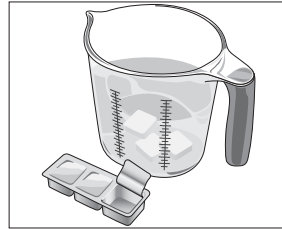
- ▶ Allow the descaling program to run to the end.

- i** The descaling program lasts approximately 40 minutes.
- i** JURA descaling tablets are available from specialized dealers.
- i** If the descaling agent comes into contact with sensitive surfaces (e.g. marble), damage cannot be ruled out. Clean up any splashes immediately.

Precondition: DE-SCALE / READY is displayed.

- ▶ Press the Rotary Switch.
EMPTY TRAY
- ▶ Empty the drip tray and coffee grounds container and reinsert them.
AGENT IN TANK
- ▶ Remove and empty the water tank.

- ▶ Completely dissolve 3 JURA descaling tablets in a receptacle holding 17 oz (500 ml) of water. This may take several minutes.



- ▶ Pour the solution into the **empty** water tank and reinsert the tank.
- DE-SCALE / READY
- ▶ Place a receptacle under the hot-water spout.



- ▶ Press the Rotary Switch.
DE-SCALING, water flows out of the hot-water spout repeatedly.
- EMPTY TRAY
- ▶ Empty the drip tray and coffee grounds container and reinsert them.
FILL WATER TANK
 - ▶ Empty the receptacle and place it under the dual and hot-water spout.



5 Maintenance

- ▶ Remove the water tank, rinse thoroughly, fill with fresh, cold water and reinsert.

PRESS ROTARY

- ▶ Press the Rotary Switch.

DE-SCALE, water flows out of the dual and hot-water spout.

The operation is interrupted, EMPTY TRAY.

- ▶ Empty the drip tray and coffee grounds container and reinsert them.

READY

- i** If the descaling operation stops unexpectedly, rinse the water tank thoroughly.

- ▶ Remove the coffee beans with a vacuum cleaner.
- ▶ Clean the bean container with a soft, dry cloth.
- ▶ Fill the bean container with fresh coffee beans, then close the bean container cover.

Descaling the water tank

Limescale deposits may form in the water tank. To ensure correct function of the machine, descale the water tank from time to time.

- ▶ Remove the water tank.
- ▶ If you use a CLEARYL Blue filter cartridge, remove it.
- ▶ Completely fill the water tank and dissolve 3 JURA descaling tablets in it.
- ▶ Leave the water tank with the descaling solution for several hours (e.g. overnight).
- ▶ Empty the water tank and rinse thoroughly.
- ▶ If you use a CLEARYL Blue filter cartridge, reinsert it.
- ▶ Fill the water tank with fresh, cold water and reinsert it.

Cleaning the bean container

Coffee beans may be covered with a slight oil film which remains on the walls of the bean container. These traces may negatively affect the coffee result. For this reason clean the bean container from time to time.

- 🔌 ▶ Press the On/Off button to switch the machine off.
- ▶ Disconnect the power plug.
- ▶ Remove the bean container cover.

6 Display messages

Message	Cause/Result	Action
FILL WATER TANK	The water tank is empty or not correctly inserted. You cannot prepare any products.	<ul style="list-style-type: none"> ▶ Fill the water tank (see Chapter 3 'Daily operation – Filling the water tank'). ▶ Insert the water tank.
EMPTY GROUNDS	The coffee grounds container is full. No specialty coffees can be prepared, but hot water preparation is possible.	▶ Empty the coffee grounds container and the drip tray (see Chapter 3 'Daily operation – Daily maintenance').
TRAY MISSING	The drip tray is not inserted correctly or is not inserted at all. You cannot prepare any products.	▶ Insert the drip tray.
FILL BEANS	The bean container is empty. No specialty coffees can be prepared, but hot water preparation is possible.	▶ Fill the bean container (see Chapter 1 'Preparing and using for the first time – Filling the bean container').
CLOSE COVER	The aroma preservation cover for the bean container is not fitted or not fitted correctly.	▶ Fit the aroma preservation cover correctly.
PRESS ROTARY	The ENA is prompting you to perform a rinse or continue a maintenance program that was already started.	▶ Press the Rotary Switch to start the rinse or to continue the maintenance program.
READY / M-RINSE	The ENA requests a milk system rinse.	▶ Press the Rotary Switch to start milk system rinsing.
READY / CLEAN	The ENA is prompting you to clean it.	▶ Perform cleaning (see Chapter 5 'Maintenance – Cleaning the machine').
READY / DE-SCALE	The ENA is prompting you to descale it.	▶ Perform descaling (see Chapter 5 'Maintenance – Descaling the machine').
READY / FILTER	The filter cartridge no longer works. The ENA is prompting a filter change.	▶ Replace the CLEARYL Blue filter cartridge (see Chapter 5 'Maintenance – Changing the filter').
NOT ENOUGH POWDER	There is insufficient ground coffee in the machine; the ENA stops the operation.	▶ The next time you prepare a beverage, add more ground coffee (see Chapter 2 'Preparation – Ground coffee').
TOO HOT	The system is too hot to start a maintenance program.	▶ Wait for several minutes until the system has cooled or prepare a specialty coffee or hot water.

7 Troubleshooting

Problem	Cause/Result	Action
Insufficient foam is produced when the milk is frothed, or milk sprays from the dual spout.	The dual spout is dirty.	<ul style="list-style-type: none"> ▶ Clean the dual spout (see Chapter 5 'Maintenance – Cleaning the milk system'). ▶ Dismantle and rinse the dual spout. (see Chapter 5 'Maintenance – Dismantling and rinsing the dual spout').
Coffee only comes out in drips when it is being prepared.	Coffee or ground coffee has been ground too finely and is blocking the system.	▶ Set the grinder to a coarser setting or use coarser ground coffee (see Chapter 2 'Preparation – Adjusting the grinder').
Water hardness cannot be adjusted.	The CLEARYL Blue filter cartridge is activated.	▶ Deactivate the CLEARYL Blue filter cartridge in programming mode.
FILL WATER TANK is displayed although the water tank is full.	The water tank float is trapped.	▶ Descale the water tank (see Chapter 5 'Maintenance – Descaling the water tank').
Grinder is making a very loud noise.	There are foreign objects in the grinder.	▶ Contact customer support in your country (see Chapter 11 'JURA contact details / Legal information').
ERROR 2 is displayed.	If the machine has been exposed to the cold for a long period of time, heating may be disabled for safety reasons.	▶ Warm the machine at room temperature.
Other ERROR messages are displayed.	–	<ul style="list-style-type: none"> ▶ Switch off the ENA with the On/Off button. ▶ Contact customer support in your country (see Chapter 11 'JURA contact details / Legal information').

i If you were unable to solve the problem, contact customer support in your country (see Chapter 11 'JURA contact details / Legal information').

8 Transport and environmentally friendly disposal

Transport / Emptying the system

Keep the packaging for your ENA. It should be used to protect the machine during transport.

In order to protect the ENA from frost during transport, the system must be emptied.

Precondition: READY is displayed.

- ▶ Place a receptacle under the hot-water spout.




- ▶ Press the Hot Water button.
WATER, hot water flows out of the hot-water spout.
- ▶ Remove and empty the water tank.
Hot water will continue to flow until the system is empty.
FILL WATER TANK
- ▶ Press the On/Off button to switch the machine off.

Disposal

Please dispose of old machines in an environmentally neutral way.



9 Technical data

Voltage	120 V ~, 60 Hz
Power	1450 W
Conformity mark	
Pump pressure	static, max. 15 bar
Holding capacity of water tank (without filter)	37.2 oz (1.1 l)
Holding capacity of bean container	4.4 oz (125 g)
Holding capacity of coffee grounds container	Approx. 10 servings
Cord length	Approx. 43.3 in. (1.1 m)
Weight	Approx. 20.7 lb (Approx. 9.4 kg)
Dimensions (W × H × D)	9.0 × 12.7 × 17.5 in. (23 × 32.3 × 44.5 cm)

Directives

The machine complies with the following directives:

- Standard UL 1082
- Canadian Standard CSA C22.2 No. 64

10 Index

A

- Addresses 32
- Aroma preservation cover
 - Bean container with aroma preservation cover 8
- Automatic switch-off 18

B

- Bean container
 - Bean container with aroma preservation cover 8
 - Cleaning 26
 - Filling 10
- Bus bar
 - Technical data 29

Button

- Cappuccino button 9
- Coffee button 9
- Espresso button 9
- Hot Water button 9
- Latte Macchiato button 9
- Milk Foam button 9
- On/Off button 8

C

- Cappuccino 14
- Cappuccino frother cleaning
 - Cleaning the milk system 20
- Cappuccino frother rinsing
 - Rinsing the milk system 20
- Cleaning
 - Bean container 26
 - Machine 23
- CLEARYL Blue filter cartridge
 - Changing 23
 - Inserting and activating the filter 22
- Coffee 14
- Coffee grounds container 8
- Consistency of grind
 - Adjusting the grinder 15
 - Grinder adjustment switch 9
- Contact details 32
- Cup platform 8
- Customer support 32

D

- Descaling
 - Machine 24
 - Water tank 26
- Display 9, 10
- Display messages 27
- Disposal 29
- Drip tray 8
- Dual spout
 - Dismantling and cleaning 21
 - Height-adjustable dual spout 8

E

- Emptying the system 29
- Errors
 - Troubleshooting 28
- Espresso 14

F

- Filler funnel
 - Filler funnel for ground coffee 9
- Filling
 - Bean container 10
 - Water tank 16
- Filter
 - Changing 23
 - Inserting and activating the filter 22
- First-time use 10
 - With filter cartridge activation 11
 - Without filter cartridge activation 11

G

- Grinder adjustment switch 9
- Ground coffee 14
 - Measuring spoon for ground coffee 9
 - Powder chute for ground coffee 9

H

- Hotline 32
- Hot water 16
- Hot-water spout 8

I

- Important safeguards
 - Safety 4
- Instant coffee
 - Ground coffee 14

J

- JURA
 - Contact details 32

L

- Language 19
- Latte macchiato 14

M

- Machine
 - Cleaning 23
 - Descaling 24
 - Regular maintenance 16
 - Rinsing 20
 - Setting up 10
 - Switching off 17
 - Switching on 16
- Maintenance 19
 - Daily maintenance 16
 - Regular maintenance 16
- Measuring spoon for ground coffee 9
- Messages, display 27
- Milk
 - Connecting milk 13
- Milk foam 14
- Milk system
 - Cleaning 20
 - Rinsing 20

P

- Permanently setting the water for the cup size 15
- Permanent settings in programming mode 17
- Powder chute
 - Powder chute for ground coffee 9
- Power cord 8
- Preparation 13, 14
 - Cappuccino 14
 - Coffee 14
 - Espresso 14
 - Ground coffee 14
 - Hot water 16
 - Latte macchiato 14
 - Milk foam 14
- Problems
 - Troubleshooting 28

- Programming mode 17
 - Automatic switch-off 18
 - Language 19
 - Products 17
 - Setting the water hardness 18
 - Unit for amount of water 18

R

- Regular maintenance 16
- Rinsing
 - Machine 20
- Rotary Switch 9
 - Status display 9
- Rotary Switch status display 9

S

- Safety
 - Important safeguards 4
- Settings
 - Permanent settings in programming mode 17
- Setting up
 - Setting up the machine 10
- Spout
 - Height-adjustable dual spout 8
 - Hot-water spout 8
- Switching off 17
- Switching on 16
- Switch-off
 - Automatic switch-off 18
- Symbol description 3

T

- Technical data 29
- Tel 32
- Transport 29
- Troubleshooting 28

U

- Unit for amount of water 18
- Use, First-time 10

W

- Water hardness
 - Determining the water hardness 12
 - Setting the water hardness 18
- Water tank 8
 - Descaling 26
 - Filling 16

11 JURA contact details / Legal information

11 JURA contact details / Legal information

Headquarters

JURA Elektroapparate AG
Kaffeeweltstrasse 10
CH-4626 Niederbuchsiten
Switzerland

	USA: JURA Inc.	Canada: FAEMA
Customer Service		
Phone	1-800-220-5701	1-(855)-544-8600
E-Mail	info@us.jura.com	info@juracanada.ca
Opening Hours (EST)	Mon – Thu 9am – 9pm Fri 9am – 8pm Sat 9am – 5pm	
Distributor Address	20 Craig Road Montvale, NJ 07645	115 Matheson Boulevard East Mississauga, Ontario, L4Z 1X8
Phone	001 (201) 767-3999	1-(905)-501-8600
Fax	001 (201) 767-9684	
Internet	www.us.jura.com	www.ca.jura.com

@ You will find additional contact details for your country at www.jura.com.

Technical changes

We reserve the right to make technical changes. The diagrams used in these instructions for use are for illustration purposes only and do not represent the original colors of the machine. Some details of your ENA may vary.

Feedback

Your opinion is important to us! Use the contact details at www.jura.com.

Copyright

The instructions for use contain information which is protected by copyright. It is not permitted to photocopy these instructions for use or translate them into another language without the prior written consent of JURA Elektroapparate AG.