

Create.
New.
Taste.



iSi GmbH
Kürschnergasse 4
A-1217 Vienna
T +43 (1) 250 99-0
info@isi.com
www.isi.com/culinary

Distribution Deutschland
iSi Deutschland GmbH
Mittelitterstraße 12-16
D-42719 Solingen
T +49 (212) 397-0
isideutschland@isi.com
www.isi.com/culinary/de

Imported and distributed by
iSi North America, Inc.
Fairfield, NJ 07004
Phone +1 (973) 227-2426
Phone +1 (800) 447-2426
isinorthamerica@isi.com
www.isi.com/culinary/us



Inspiring food.

Dessert
Whip.

Dessert
Whip
Mini.

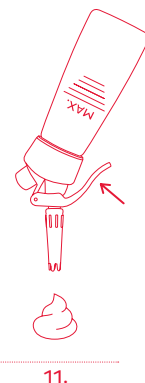
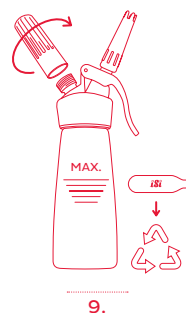
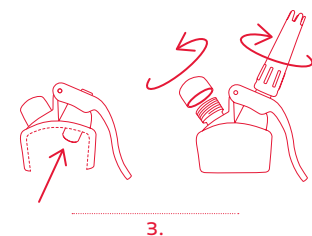
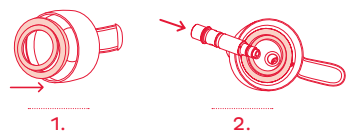
Instructions for Use / Gebrauchsanleitung /
Notice d'utilisation / Istruzioni per l'uso /
Modo de empleo / Handleiding / Instruções de
uso / Οδηγός χρήσης / Használati útmutató /
คำแนะนํารุ่น



947070000

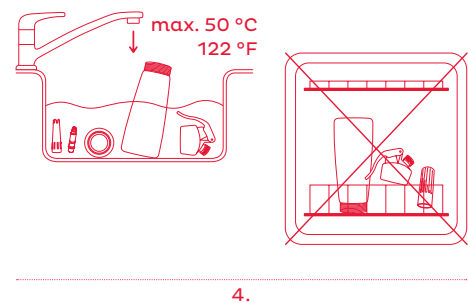
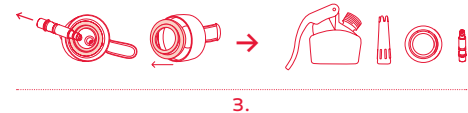
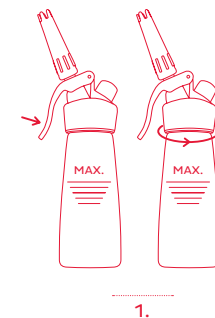
Instructions for Use

Gebrauchsanleitung / Notice d'utilisation /
Istruzioni per l'uso / Modo de empleo /
Handleiding / Instruções de uso /
Οδηγίες χρήσης / Használati útmutató /
คำแนะนำการใช้งาน



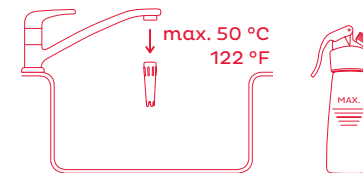
Cleaning

Reinigung / Nettoyage / Pulizia / Limpieza / Reiniging /
Limpeza / Καθαρισμός / Tisztítás / การทำความสะอาด



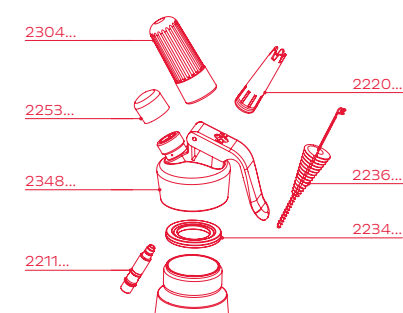
Interim Cleaning

Zwischenreinigung / Nettoyage intermédiaire /
Pulizia intermedia / Limpieza intermedia /
Tussenreiniging / Limpeza intermediária /
Ενδιάμεσος καθαρισμός / Közbenő tisztítás /
การทำความสะอาดระหว่างใช้งาน



Expanded Drawing

Explosionszeichnung / Vue éclatée / Esploso /
Vista detallada / Opengewerkte tekening /
Vista explodida / Αναπτυσγμένο διάγραμμα /
Robbantott ábra / ระเบิดระดมดู ๕





Inspiring food.

EN

English
2

ES

Español
38

EL

Ελληνικά
56

DE

Deutsch
14

NL

Nederlands
44

HU

Magyar
62

FR

Français
20

PT

Português
50

TH

ชาวไทย
68

IT

Italiano
32

EN

Thank you for
choosing an iSi
product.

Please read the Whipper instructions
carefully before first-time use.

Discover the world of iSi:

Visit the iSi website and learn more about our extensive range of products: Our comprehensive collection of recipes from simply yummy to creatively sophisticated combinations offers you access to the entire culinary world of iSi. Let yourself be inspired!

Want to speak directly with a cooking professional? No problem! Our head chef is happy to answer your questions on our iSi blog, where you can find up-to-date, interesting information all about iSi. Take a look!

The iSi website provides detailed product information about all iSi Whippers/Siphons and iSi Accessories.

The detailed online instructions provide information about first-time use, cleaning, and troubleshooting iSi Whippers and Siphons.

www.isi.com/culinary

www.isi.com/culinary/us

If you have any further questions please contact info@isi.com
For the US: isinorthamerica@isi.com

Guaranteed quality:

Every iSi Whipper and Siphon is thoroughly inspected before leaving the factory. iSi offers a two-year warranty for materials and machining, as long as faults are not determined to be the result of improper use. The warranty is effective from the date on the purchase receipt.

Register online now and we will extend your warranty!

Enjoy the benefits of a three-year warranty for materials and machining.

The warranty is only valid when original whipper parts from iSi are used, as given in the list of product components. The perfect function of your Whipper/Siphon can only be guaranteed if you exclusively use iSi chargers with it. No warranty or liability claim will be upheld for faults, damage, or consequential damage particularly determined to be the result of non-compliance and/or ignorance of the user instructions and the safety information therein.

FOR U.S. ONLY:

Limited warranty, Limitations and Warning: iSi products are thoroughly tested before they leave the factory, and iSi warrants for a period of two years that its products are free from defects in materials and workmanship and, if used only with other iSi products, will function as intended. iSi's liability in the event of a product's failure to meet this warranty is limited to repair or replacement of the product or, at iSi's option or if iSi is unable to deliver a replacement product, to refund the purchase price. In no event, however, shall iSi be liable for incidental or consequential damages. Any implied warranties are limited to the terms of the express warranties, including the two-year duration. iSi cream whipping systems, bottles and chargers are designed and engineered to function together as a system and involve gas under pressure. All iSi products and parts bear the iSi logo; iSi recommends that only iSi parts and products be used with iSi products, including that only iSi chargers be used with iSi Whippers/Siphons and that iSi chargers be used only in iSi Whippers/

Siphons. Failure to follow this recommendation or any failure to follow the instructions for use and care of the products invalidates this warranty and all implied warranties in their entirety as to any consequences of such failure.

WARNING: In addition, failure to follow this recommendation or any of the instructions for use and care constitutes misuse of iSi products and could result in malfunction of the system and possible personal injury and/or property damage. In the event of any personal injury, you should promptly seek appropriate medical attention.



Simply register online and take
advantage of the extended benefits:
www.isi.com/warranty



For the US please refer to
www.isi.com/warranty/us

Whipper Data.

Max. service pressure PS	20 bar / 290 psig
Min. operating temperature	1°C / 34°F
Max. operating temperature	30°C / 86°F
Max. filling volume	0.25 L / half US pint 0.5 L / 1 US pint
Max. number of chargers to be used	1 iSi cream charger
Usage	Not approved for commercial use. For fresh, pure cream, and desserts. Suitable for cold preparations only.

Material List.

Description	Material
Bottle	Stainless steel
Head	PBT, POM, NBR, silicone, PU, Messing, brass, nickel-plated brass, stainless steel
Head gasket	TPE
Decorator tip	PP, PBT
Charger holder	PA
Dispensing piston	Aluminum, stainless steel, NBR



Safety Information.

Failure to follow this safety instructions or any recommendation for use and care constitutes misuse of iSi products and could result in malfunction of the system and possible personal injury and/or property damage.

- Do not exceed minimum or maximum pressure, minimum or maximum temperature, maximum filling volume, number of chargers or usage of the iSi Whipper shown in the Whipper Data! Do not use for any purposes not indicated in these instructions!
- Please read the instructions for use carefully to avoid operating errors and keep a copy on hand!
- Do not use force when screwing on or off the head, using the whipper and during any operation described in these instructions!
- Store the iSi Whipper out of the reach of children!
- Only charge a whipper that is filled!
- Never store or use the iSi Whipper outside of the min. and max. operating temperatures. Do not store in a freezer!
- Only use a head and bottle of the same iSi Whipper model together!
- Never combine iSi components with components from another brand or manufacturer!
- The head and the charger holder should always be screwed on straight and completely tight, never crooked or incompletely tightened!
- Only use original iSi cream chargers!

- When screwing on the charger, do so away from others and keep face away from the whipper; do not bend over the whipper!
- The whipper is a pressure equipment. If it is dropped or damaged (e.g. cracked or dented), do not use again because it poses a risk of injury. Please have the whipper checked by the iSi service center!
- Never unscrew the head when the whipper is pressurized!
- Never use the lever as a carrying handle!
- Proper cleaning is a mandatory requirement in order to avoid the whipper becoming blocked. Check that the iSi Whipper has been properly cleaned before use!
- Only dismantle the iSi Whipper for cleaning in accordance with the illustration!
- Only clean by hand using lukewarm water and domestic hand dishwashing detergent. The iSi Whipper is not dishwasher safe! Cleaning the head of the whipper in the dishwasher may damage the plastic head and the charger holder, which ultimately puts your safety when using your iSi Whipper at risk!
- Do not make any modifications to the iSi Whipper. This will void the warranty and exempt the company from any liability!
- Never use more chargers than specified and never overfill the whipper. This will ensure that the specified maximum operating pressure is not exceeded!
- If the pressure will not release, please contact iSi or your service center!

NOTE: Before using the iSi Whipper for the first time, carry out thorough cleaning as shown in the Cleaning illustration

NOTE: To avoid the formation of lumps, you should completely dissolve powdered ingredients such as sugar, etc., in some liquid before filling. Do not use any ingredients with fruit pulp or seeds.

Instructions for Use.

NOTE: Please observe the illustrations “instructions for use”!

Cream/cream-based desserts should be cold when filled. Dispense cream/cream-based desserts from the iSi Whipper shortly before eating.

Preparation

1. Make sure that the head gasket is inserted into the head.
2. Insert dispensing piston into the head.
3. Screw the decorator tip onto the dispensing piston, not too tight but enough to be secure.
4. Fill bottle with the prepared mixture.

NOTE: Please note the fill line and marking on the bottom of the bottle. Do not overfill! The remaining empty space is required for optimal whipping results. Use a measuring cup.

Equipment Setup

5. Screw the head onto the bottle so that it is straight and tighten by hand.
6. Insert the original iSi cream charger into the charger holder.

NOTE: Never screw on the charger when there is no decorator tip attached to the dispensing piston.

7. Screw the charger holder with the inserted charger onto the head until you can hear that all of the charger contents have flowed into the whipper.

 **WARNING:** The whipper is now pressurized!

8. Shake the whipper vigorously > 5.
9. Unscrew the charger holder and recycle the empty charger.

NOTE: A slight hissing noise may be heard when removing the charger holder. This is normal.

10. Screw the cap onto the thread.

Operation

11. For dispensing, the device must be held „head-first“ (with the decorator tip facing downwards!) and the lever must be operated gently.

NOTE: Test the consistency of the contents when the whipper is first used. Shake the whipper again if the consistency is still too runny.

Cleaning.

NOTE: Please observe the illustrations on cleaning!

1. Press the lever until the whipper is completely empty and there is no pressure left. Remove the head from the bottle.
2. Remove the decorator tip from the dispensing piston.
3. Remove the head gasket and the dispensing piston for basic cleaning.
4. Clean product components by hand using warm (max. 50°C) potable water along with domestic hand dishwashing detergent and clean the dispensing piston and decorator tip using the cleaning brush. Completely remove any traces of fat or egg white.

NOTE: Do not use scouring agents or abrasive sponges/brushes.

NOTE: Do not put in the dishwasher and do not wash in boiling water.

NOTE: The decorator tip can be unscrewed at any time for periodic cleaning.

Storage.

If the iSi Whipper is not going to be filled again immediately, leave the components to air dry in a clean place and store the iSi Whipper in a dismantled condition. Never store the whipper with the head screwed on!

Troubleshooting.

Release the pressure

Place the whipper upright, place a towel over the decorator tip and gently operate the lever until the pressure is gone from the iSi Whipper. Now the head can be removed from the bottle.

If the pressure will not release, please contact iSi or your service center.

I cannot remove the content and/or the iSi Whipper sprays.

1. There is a blockage due to undissolved ingredients such as sugar:
 - „Release the pressure“ and then carry out „Cleaning“.
 - Make sure that powdered ingredients are dissolved completely.
2. The cream or cream-filled preparation has become too stiff:
 - Next time decrease the intensity and frequency of the shaking cycles.
 - For information on the frequency of the shaking cycles, refer to www.isi.com/home-edition/whippedcream.
3. Content is too firm due to over-cooling:
 - Leave the whipper to stand at room temperature for around 5-10 minutes.
 - Avoid freezing the content.
4. No pressure/not enough pressure in the device:
 - Only use original iSi cream chargers.
 - Do not reuse empty chargers. They should be recycled immediately.
 - Only operate the whipper „headfirst“ with a vertical decorator tip because otherwise there could be a loss of pressure.^

5. Too many chargers were used:
 - Pay attention to the maximum number of chargers to be used indicated in the Whipper Data.
 - „Release the pressure“ and then set-up again.

The content being dispensed is too runny.

1. The whipper was overfilled:
 - „Release the pressure“, pour out the excess liquid and then set-up the whipper again.
 - Observe the maximum filling amounts.
2. The Whipper was not shaken or not shaken enough:
 - For information on the frequency of the shaking cycles, refer to www.isi.com/home-edition/whippedcream.
3. The content is not cold enough:
 - Place a filled and prepared iSi whipper in the refrigerator for at least 1-2 hours.
 - Please observe the instructions on the cream packaging regarding optimal preparation temperature.
4. An unsuitable charger was used:
 - Only use original iSi cream chargers.

The cream charger will not puncture.

1. The charger being used is not suitable:
 - Only use original iSi cream chargers.
2. The charger was inserted backwards:
 - Insert the charger correctly (see diagram: Instructions for Use).
3. The puncturing unit has been damaged:
 - Send the whipper to iSi or to a service center.

During operation, gas is leaking through the dispensing piston or decorator tip.

1. The device was used without the decorator tip:
 - Before screwing on the charger, make sure that the decorator tip is attached to the dispensing piston.
 - „Release the pressure“ and then set-up the whipper again.

2. The dispensing piston seal has been damaged:
 - The dispensing piston needs to be replaced and is available as an original iSi spare part.

During operation, gas is leaking between the bottle and the head.

1. The head gasket is missing:
 - „Release the pressure“ and insert the head gasket into the head.
2. The head gasket has been damaged:
 - „Release the pressure.“ The head gasket needs to be replaced and is available as an original iSi spare part.
3. The head was not tightened securely:
 - „Release the pressure“
 - Tighten the head on to the bottle by hand as per the instructions.
4. The bottle has been damaged on the upper edge:
 - „Release the pressure“ and send the whipper to iSi or a service center.

Service.

Replacement parts are available individually and at an affordable price.

See your specialist dealer for the availability of replacement parts. In Austria, you can also get in contact via info@isi.com. In the US contact isinorthamerica@isi.com

Only send in the complete whipper for repairs.

Replacement parts can be seen in greater detail on the expanded drawing.

