



Hanging lamp with horn
Assembly and installation instructions

CAUTION: • BEFORE INSTALLING THE LUMINAIRE, MAKE SURE THAT THE CURRENT IS CUT TO THE BOX FUSES / MAIN CIRCUIT BREAKER.

Important safety instructions:

- These instructions are provided for security reasons. Read them carefully and completely before begin assembling and installing this fixture.
- We recommend that a qualified electrician install all direct electrical cables.
- A PERSON WHO KNOWS CONSTRUCTION AND OPERATION AND HAZARDS POSSIBLE THIS PRODUCT MUST INSTALL IT, ACCORDING TO INSTALLATION CODES APPLY.
- The luminaire is intended for indoor use. It must be connected only to electronic circuits single-phase, 3-wire (with earth wire or equivalent protection system).
- For security reasons, it is highly recommended that two people participate in the installation of the luminaire.
- This fixture operates with up to six (6) standard 40-watt TYPE G incandescent bulbs maximum (not included) or six (6) 9 watt compact fluorescent bulbs (not included) or six (6) bulbs SBLED 4.5 watts (not included). To avoid the risk of fire, do not exceed the wattage recommended for lighting.
- The luminaire is intended for indoor use, DRY LOCATIONS ONLY.
- Keep these instructions.

CAUTION:

- To avoid the risk of fire, electric shock, or personal injury, always turn off the power. fixture so that it cools before changing the bulb.
- Do not touch the bulb when the light is on. Do not look directly at the lighted bulb.
- Do not get near flammable materials from the lighted bulb.
- This fixture contains lead, a chemical known in the state of California to cause the cancer and congenital malformations or other damage to the fetus. Wash your hands after installed, handled, cleaned or touch this fixture.

Pre-assembly:

- Remove all parts and materials from the box and all plastic protective packaging.
- Do not discard any contents before assembly is complete to avoid accidentally throwing small ones parts or materials.
- For your comfort and safety, it is recommended that two people participate in this installation.

NECESSARY TOOLS (not included):

Parts included:

(A) Mounting Wedge (1)

(B) Mounting screws (3)

(C) Mount (1)

(D) Supports (6)

(E) Lamp post (1)

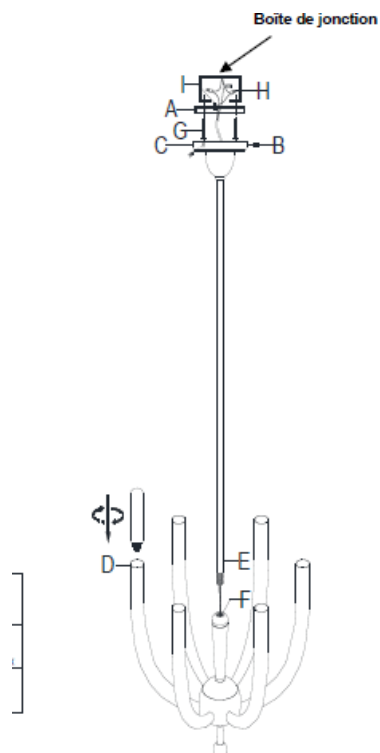
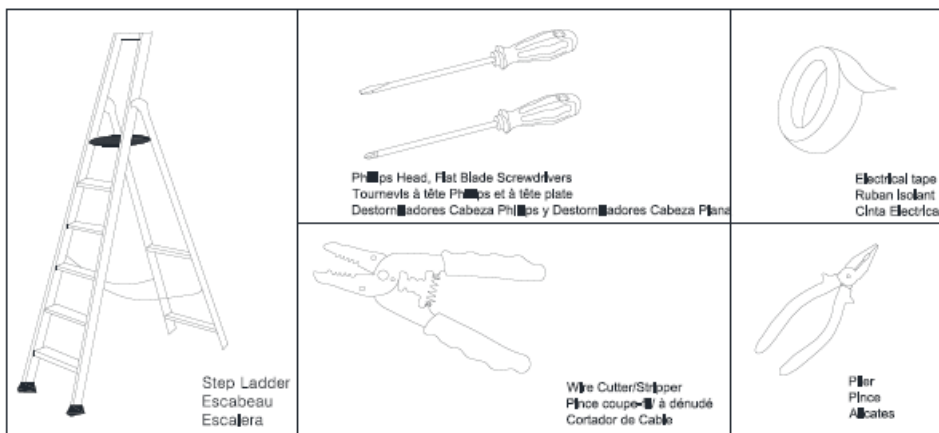
(F) Joint (1)

Material provided:

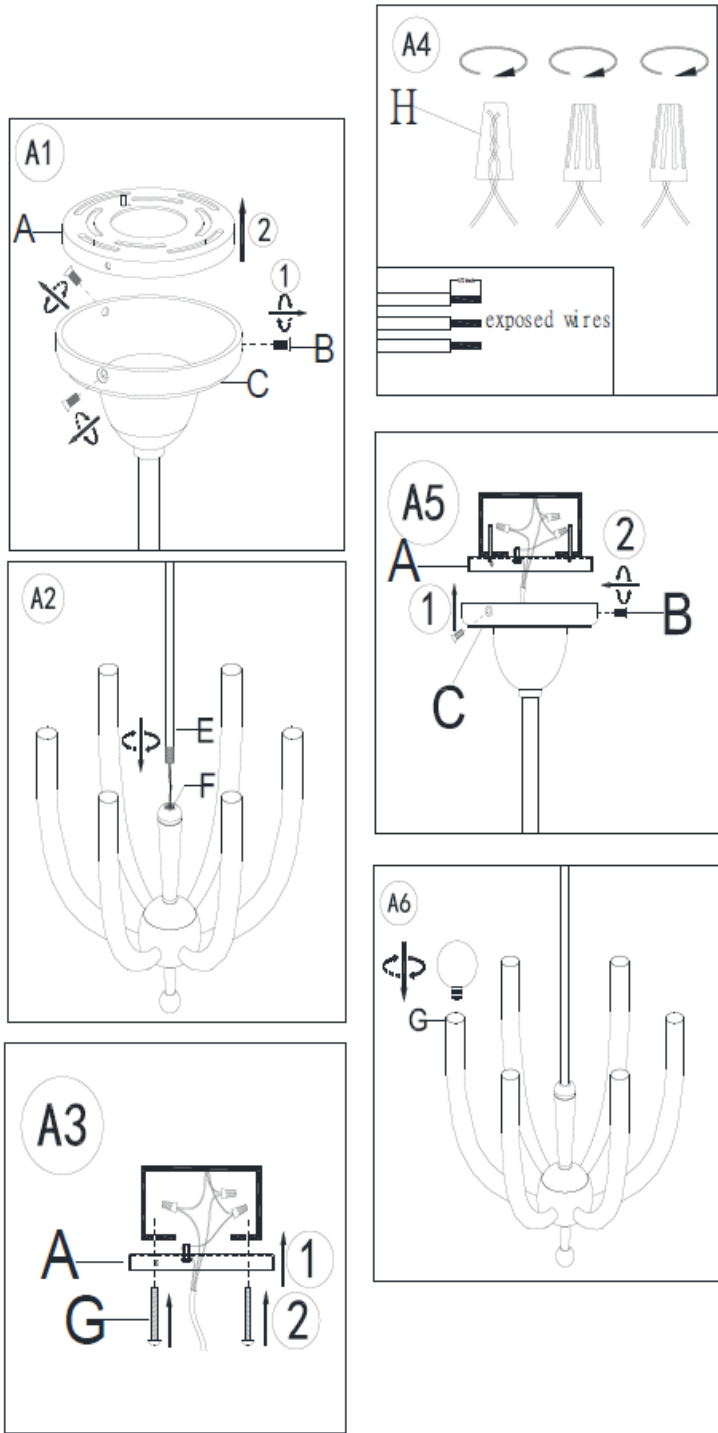
(G) Fixing screws (2)

(H) Plastic Cable Clipped Connectors (3)

(I) Green ground screw (1)



Assembly and installation instructions: λ CUT THE MAIN POWER SUPPLY OF THE FUSE OR CIRCUIT BREAKER. λ Carefully unpack all parts and materials from the luminaire and place them on a clean work area.



1. Separate the mounting block (A) from the mount (C) removing the mounting screw (B) clockwise of a watch. Do not discard the screws as they will be used later.

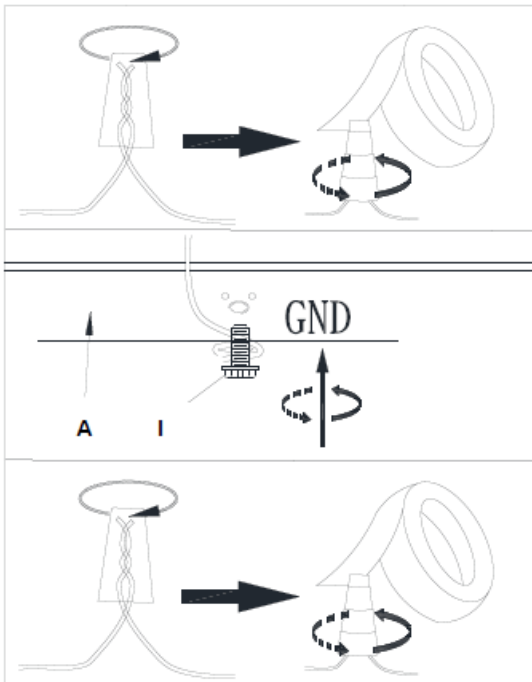
2. Thread the lamp post (E) into the top opening seal (F) by turning clockwise shows until tightening.

3. Secure the mounting block (A) to the box join using the mounting screws (G).

4. Read the section "To make the cable connections "below.

5. Attach the mount (C) to the shim mounting (A) using mounting screws (B).

6. Insert the indicated bulbs (no included) in the supports (G). DO NOT EXCEED POWER IN WATTS SHOWN.



To make the cable connections:

1. Carefully remove the existing cables from the junction box and allow the cables to hang from the ceiling. The

HOT cable is usually black. The NEUTRE cable is usually white. Check if there is a ground wire is usually green or green with a yellow stripe or exposed copper wire. If necessary, use a stripper to wires to remove approximately 1/2 "of insulation from each wire.

2. Thoroughly inspect the luminaire wires. NEUTRAL LUMINAIRE CABLE has GROOVES LONGITUDINAL FINES along its length. The HOT CABLE OF LUMINAIRE is SMOOTH and the wire in COPPER NU is the WIRE OF EARTH. If in doubt and it is impossible to determine the electrical wires with trust, we recommend to ask an electrician and not to continue the installation.

3. With the help of another person who will have to support the weight of the luminaire, fix the cables of the luminaire to the cables of the junction box as shown in the illustrations.

Connect the EARTH CORD LUMINAIRE IN THE WIRE OF EARTH JUNCTION BOX using the wired jack connector in plastic (H) and wrap the connection with insulating tape.

If the junction box is NOT equipped of a WIRE, wrapping the wire of ground of the luminaire around the earth screw (I) and insert the screw into the mounting (A), marked "GND" and tighten the screw to secure the cable.

First connect the NEUTRAL CABLE OF LUMINAIRE WITH NEUTRAL CABLE OF JUNCTION BOX and then connect HOT CABLE from LUMINAIRE to HOT CABLE FROM THE BOX JUNCTION using the connectors to wired plastic cradle (H). To wrap up.

NOTE: IT IS IMPERATIVE THAT THE JUNCTION BOX IS PROPERLY EARTHED! DO NOT REVERSE HOT AND NEUTRAL CONNECTIONS OR SAFETY WILL BE COMPROMISED. 4. Check the connections and if everything looks good, group the wires in the ceiling junction box.

Care instructions: • Wipe with a soft, dry cloth or feather duster. • Never use strong chemical or abrasive cleaners as they may damage the finish of the unit. luminaire. thank you for your purchase.