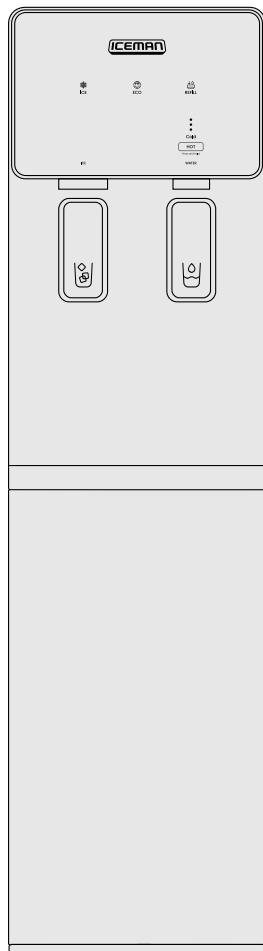




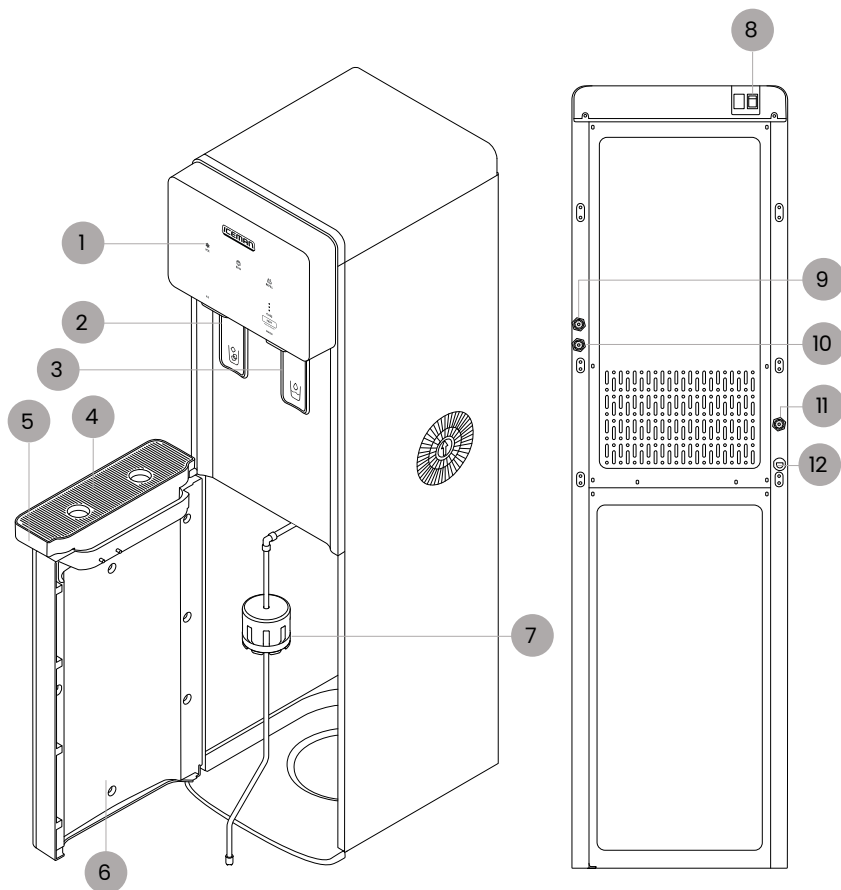
Ice Maker & Water Dispenser



RJ56-DIS

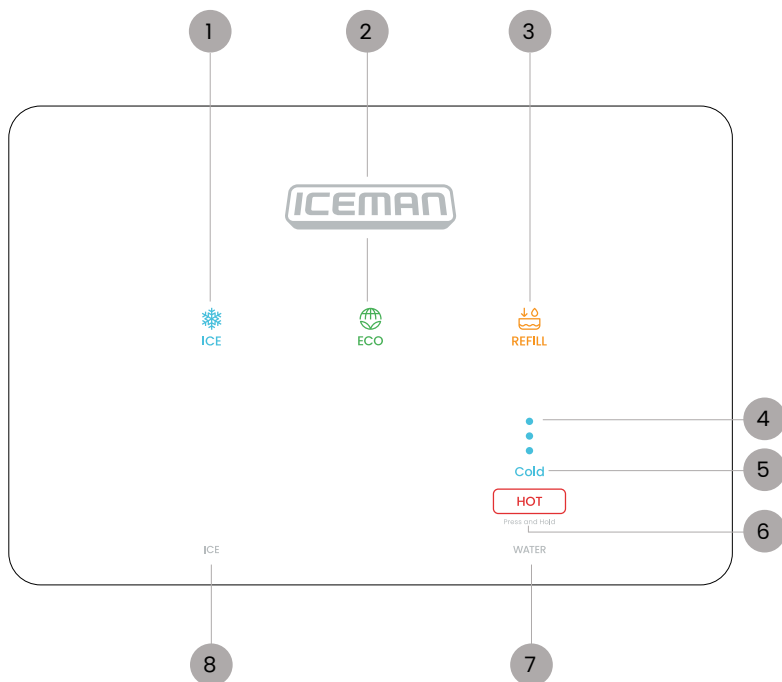
Get to Know Your Ice Maker

1. Control panel
2. Ice dispensing trigger
3. Water dispensing trigger
4. Drip tray cover
5. Drip tray
6. Door
7. Bottle cover and supply tube
8. Power switch
9. Hot water tank drain valve
10. Storage tank drain valve
11. Cold water tank drain valve
12. Power cord (not shown)



Control Panel

1. ICE button
2. ECO mode button
3. REFILL indicator and button
4. Progress indicator lights
5. Cold water indicator light
6. HOT water button
7. WATER outlet label
8. ICE outlet label



READ ALL INSTRUCTIONS BEFORE USE

For your safety and continued enjoyment of this product, always read the instruction manual before using.

SAFETY INSTRUCTIONS & IMPORTANT SAFEGUARDS

WARNING: When using electrical appliances, basic safety precautions should always be followed, including:

1. Read all instructions.
2. **DANGER!** To protect against the risk of electric shock, do not immerse the cord, plug, or any part of the unit in water or other liquid.
3. **Do NOT** operate any electrical appliance with a damaged cord or plug, or after the appliance malfunctions or has been dropped or damaged in any manner. If damage is suspected, contact Chefman® Customer Support for examination, repair, or electrical or mechanical adjustment.
4. The use of accessory attachments that are not recommended by the manufacturer may cause fire, electric shock, or injury.
5. **Do NOT** use outdoors.
6. **Do NOT** use an appliance for anything other than its intended use.
7. Prior to use, this dispenser must be properly assembled and installed in accordance with this manual.
8. This dispenser is intended for water dispensing only. Do not use other liquids. Use recommended water bottles only. Do not use for anything other than intended purposes.
9. Install and use only on a hard, flat, and level surface.
10. **Do NOT** place the dispenser in an enclosed space or cabinet.
11. **Do NOT** operate the dispenser in the presence of explosive fumes.
12. Position the right side of the dispenser no closer than 6 inches from the wall, and permit free airflow between the wall and the dispenser.
13. Use only properly grounded outlets.
14. **Do NOT** use an extension cord with this unit.
15. Always grasp plug and pull straight out from outlet. Never unplug by pulling on power cord.
16. Never allow children to dispense hot water without proper and direct supervision. Unplug unit to prevent unsupervised use by children.
17. Service should be performed only by a certified technician.
18. **WARNING: Do NOT** damage the refrigerant circuit.

SAFETY INSTRUCTIONS & IMPORTANT SAFEGUARDS

19. This appliance can be used by children aged from 8 years and above if they have been given supervision or instruction concerning use of the appliance in a safe way and if they understand the hazards involved. Cleaning and user maintenance shall not be made by children unless they are older than 8 and supervised. Keep the appliance and its cord out of reach of children less than 8 years.
20. Appliances can be used by persons with reduced physical, sensory, or mental capabilities or lack of experience and knowledge if they have been given supervision or instruction concerning use of the appliance in a safe way and understand the hazards involved. Children shall not play with the appliance.
21. This appliance is intended to be used in a household and similar applications such as: kitchen areas in shops, offices, and other working environments, bed-and-breakfast-type environments, and catering and similar nonretail applications.
22. **Do NOT** store explosive substances such as aerosol cans with flammable propellant in this appliance.
23. If the supply cord is damaged, it must be replaced by a special cord assembly available from the manufacturer or its service agent.
24. Never turn the machine upside down or lean it more than 45°.
25. The thermostat has been adjusted. There is no need to adjust it by yourself. When the machine is below the freezing point and blocked by ice, the ice making mode should be turned off for 4 hours before turning it on again to continue its operation.
26. **CAUTION:** The dispenser will heat water to a temperature of approximately 204°F. It can cause severe burns if not handled carefully. Please use caution while operating and cleaning. Please allow ample time for any hot water inside the machine to cool down before draining it.

SAVE THESE INSTRUCTIONS FOR HOUSEHOLD USE ONLY

SAFETY INSTRUCTIONS & IMPORTANT SAFEGUARDS

WARNING: Improper use of the grounding plug can result in electric shock.

GROUNDING INSTRUCTIONS

This appliance must be grounded. In the event of an electrical short circuit, grounding reduces the risk of electric shock by providing an escape wire for the electric current. To protect against electrical shock, this appliance is equipped with a cord having a 3-prong grounding-type plug for insertion into a proper grounding-type electrical outlet.

Do NOT alter the plug for use in a 2-prong outlet. If the plug will not fit into an outlet, have a proper outlet installed by a qualified electrician.

SHORT CORD INSTRUCTIONS

A short power-supply cord is provided to reduce the hazards of entanglement or tripping over a longer cord. Longer detachable power-supply cords or extension cords are available and may be used if care is exercised in their use. If a longer detachable power-supply extension cord is used:

1. The marked electrical rating of the extension cord should be at least as great as the electrical rating of the appliance;
2. If the appliance is of the grounded type, the extension cord should be a grounding-type 3-wire cord; and
3. The longer cord should be arranged so that it will not drape over the countertop or tabletop where it can be pulled on by children or tripped over.

SAFETY INSTRUCTIONS & IMPORTANT SAFEGUARDS

POWER CORD SAFETY TIPS

1. Never pull or yank on the cord or the appliance.
2. To insert the plug, grasp it firmly and guide it into the outlet.
3. To disconnect the appliance, grasp the plug and remove it from the outlet.
4. Never use the product if the power cord shows signs of abrasion or excessive wear. Contact Chefman® Customer Support for additional guidance and support.
5. Never wrap the cord tightly around the appliance, as this could place undue stress on the cord where it enters the appliance and cause it to fray and break.

DO NOT OPERATE THE APPLIANCE IF THE POWER CORD SHOWS ANY DAMAGE OR IF THE APPLIANCE WORKS INTERMITTENTLY OR STOPS WORKING ENTIRELY.



California Proposition 65:

(Applicable for California Residents only)

WARNING: Cancer and Reproductive Harm
www.P65Warnings.ca.gov

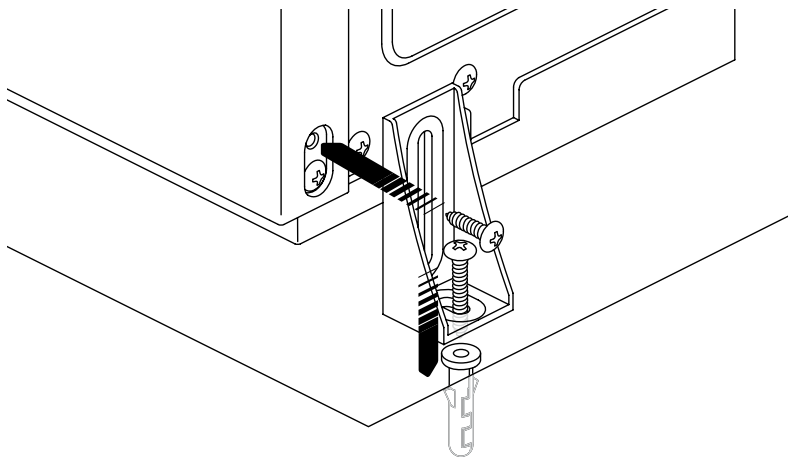
Do not place the appliance on a stovetop or any other heatable surface, even if stovetop is not on. Doing so is a fire hazard.



Before First Use



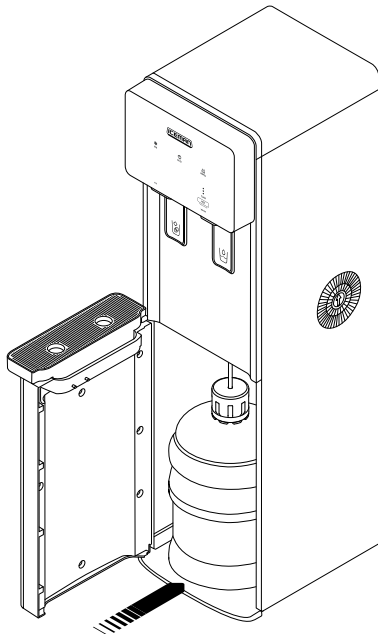
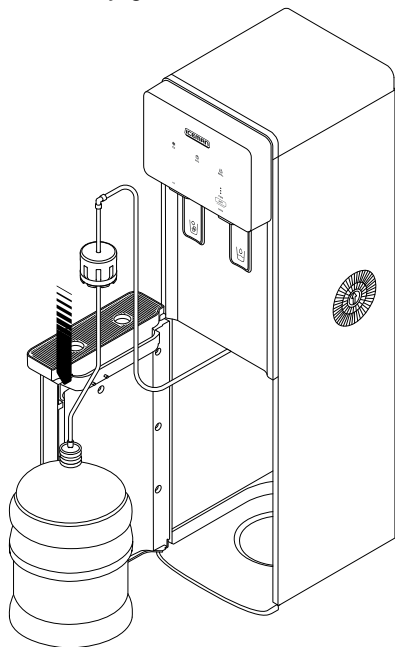
1. Remove all packaging materials, such as plastic bags and foam inserts. Check to ensure that all parts and accessories are accounted for.
2. Read and remove any stickers on the unit except for the rating label, which should remain on the unit.
3. Before plugging in the water dispenser, place it on a level surface away from direct sunlight and other heat sources. Keep at least 6 inches of clearance on the right side of the unit to ensure proper ventilation.
4. If the ground is NOT completely flat, install the anti-tip bracket: Using a screwdriver, remove the upper frame panel screw from the lower left or right side of the back of the unit as shown below. **NOTE:** There are two screws in this location; be sure to remove the upper one. Place the L-shaped bracket with the long side up against the unit and the short side on the floor. Secure it to the unit using the same screw that was removed.
5. Using a drill with a $\frac{3}{8}$ -inch diameter bit, drill a $1\frac{1}{2}$ -inch deep hole into the floor. Tap the anchor into the hole so it's flush with the floor.
6. Place the washer and long screw over the hole in the bracket and use a screwdriver to tighten the screw, securing the unit to the floor.



7. **IMPORTANT:** Before plugging in the water dispenser, let it sit upright for 24 hours. This will allow the refrigerant fluid to settle.

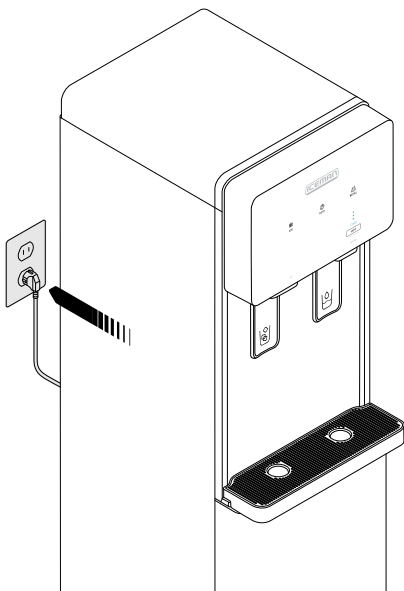
Quick Start: Set Up Your Ice Maker

1. Remove the plastic cap from a standard water jug up to 5 gallons. Feed the metal supply tube into the jug and press the bottle cover firmly over the neck of the jug.
2. Slide the water jug into the unit, centered on the circular indentation in the floor of the unit, then close the door.

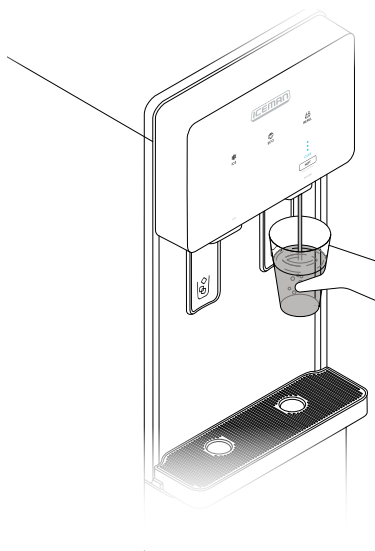


Quick Start: Set Up Your Ice Maker

3. Plug in the unit and turn on the power switch. The **Cold** light will illuminate in blue. As the water cools, the three indicator lights above will progressively light up.

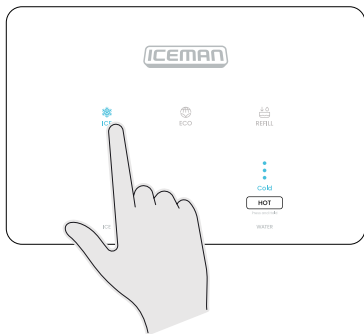


4. To dispense water, press a cup against the right dispensing trigger. Depending on the water's initial temperature and ambient room temperature, it will take about 20 to 25 minutes to cool the water to 50°F; however, you can dispense water immediately.

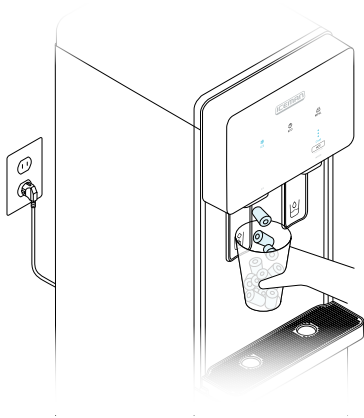


●	Cooling active:
○	Cold Water tank is above 50°F
●	Cooling active:
●	Cold Water tank is between 50°F – 41°F
○	
●	Cooling complete:
●	Cold Water tank has reached 41°F

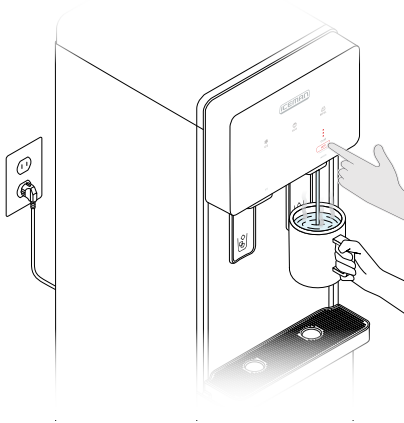
5. To activate the ice maker, press the **ICE** button. The unit will begin making ice after the water in the tank has cooled to 50°F.



6. To dispense ice, press a cup against the dispensing trigger. You can dispense ice as soon as some is available in the internal ice bucket (about 5 minutes after it starts making ice). The unit will completely fill the bucket in about 3½ hours.



7. To dispense hot water, press and hold the **HOT** button while simultaneously pressing a cup to the water dispensing trigger. The **Cold** light will turn off, and the three indicator lights will progressively light up red. When all three indicator lights are red (about 3 seconds), the hot water will begin to dispense. This double action to dispense protects against accidental hot water burns. After the hot water begins dispensing, you can release the **HOT** button.



8. To stop dispensing hot water, remove the cup from the dispensing trigger.

Additional Functions

Eco Mode

Eco Mode enables the ice maker to conserve energy during long stretches of disuse, such as overnight in an office. To turn on Eco Mode, press the **ECO** button; it will illuminate green. After sensing that the room is dark for 30 minutes, the unit will stop making ice (if ICE mode is active) and hold the water at 55°F. When lights in the room turn back on, water cooling and ice making (if previously active) will resume. If desired, you can keep the unit in Eco Mode all the time. To turn off Eco Mode, simply press the **ECO** button again.

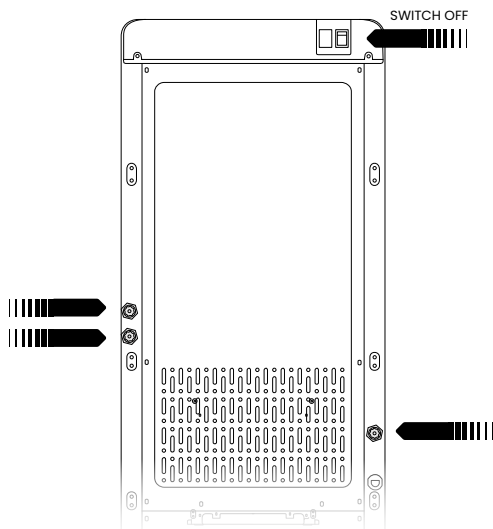
Refill Indicator

When the unit detects that it is no longer pumping water, the **REFILL** light illuminates orange and the rest of the lights turn off. To refill the unit, open the door, pull the empty water jug out from under the unit, then remove the bottle cover and metal supply tube from the empty jug. Follow instructions 1 through 3 on pp. 9 and 10 to set up the dispenser with a new jug. Close the door or press **REFILL** to resume water cooling and ice making.

Keep It Clean

Since fresh water jugs are swapped into the unit each time one runs out, the ice maker requires no regular cleaning. However, every few months the tank should be drained and the supply lines flushed with fresh water. The tank should also be drained in this manner before transporting the unit:

1. Press and hold the **REFILL** button for 3 seconds. The progress indicator lights will alternately blink blue and red.
2. The cleaning cycle will run for about 10 minutes. During this time, the other functions can't be used. (To cancel the cleaning cycle and return to standby mode, press **REFILL**.)
3. When the cleaning cycle is complete, the ICE, ECO, and REFILL icons will blink. The power switch must be turned off, then back on, to resume normal operation.
4. Power the unit off with the switch on the back. One at a time, unscrew the three valve caps on the back of the unit and remove the three rubber plugs to drain the water lines.



5. When the water has finished flowing out of all three valves, replace the plugs and screw the valve caps back on. Make sure to remove the water jug before attempting to relocate the unit.

Terms & Conditions

Limited Warranty

RJ Brands, LLC d/b/a Chefman® offers a limited 1-year Warranty (the “Warranty”) available on sales through authorized distributors and retailers only. Please note that this Warranty becomes valid from the date of initial retail purchase and that the Warranty is nontransferable and applies only to the original purchaser.

This Warranty is void without proof of purchase within the United States and Canada. Please be aware that this Warranty supersedes all other warranties and constitutes the entire agreement between the consumer and Chefman®. Any changes to the Terms and Conditions of this Warranty must be in writing, signed by a representative of Chefman®. No other party has the right or ability to alter or change the Terms and Conditions of this Warranty.

We may ask you to please submit, via email, photos and/or video of the issue you are experiencing. This is to help us better assess the matter and possibly offer a quick fix. Photos and/or video may also be required to determine Warranty eligibility.

We encourage you to register your product. Registering can make the Warranty process easier and can keep you informed of any updates or recalls on your product. To register, follow the directions on the Chefman® Warranty Registration page in the Chefman® User Guide. Please retain your proof of purchase even after registering. In the event that you do not have proof of your purchase date, we may declare your Warranty void or we may, at our sole discretion, apply the date of manufacture as the purchase date for purposes of this Warranty.

What the Warranty Covers

- **Manufacturer Defects**

Chefman® products are warranted against defects in material and workmanship, under normal household use, for a period of 1 year from the date of purchase when used in accordance with the directions listed in the Chefman® User Guide. If your product does not work as it should, please contact Customer Support at support@chefman.com so that we may assist you.

This Warranty Does Not Cover

- **Misuse**

Damage that occurs from neglectful or improper use of products, including, but not limited to, damage that occurs as a result of usage with incompatible voltage, regardless of whether the product was used with a converter or adapter. See Safety Instructions in the Chefman® User Guide for information on proper use of product;

- **Poor Maintenance**

General lack of proper care. We encourage you to take care of your Chefman® products so that you may continue to enjoy them. Please see Keep It Clean directions in this Chefman® User Guide for information on proper maintenance;

- **Commercial Use**

Damage that occurs from commercial use;

- **Normal Wear and Tear**

Damage or degradation expected to occur due to normal use over time;

- **Altered Products**

Damage that occurs from alterations or modifications by any entity other than Chefman® such as the removal of the rating label affixed to the product;

- **Catastrophic Events**

Damage that occurs from fire, floods, or natural disasters; or

- **Loss of Interest**

Claims of loss of interest or enjoyment.

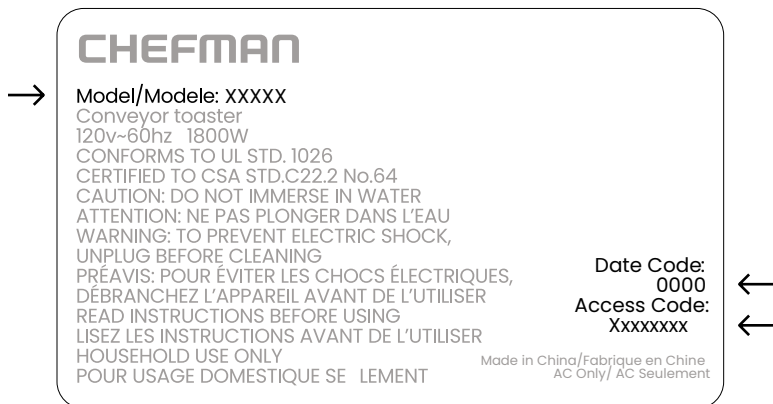
For product information, please visit us at Chillwithiceman.com.

EXCEPT WHERE SUCH LIABILITY IS REQUIRED BY LAW, THIS WARRANTY DOES NOT COVER, AND CHEFMAN® SHALL NOT BE LIABLE FOR, INCIDENTAL, INDIRECT, SPECIAL, OR CONSEQUENTIAL DAMAGES, INCLUDING WITHOUT LIMITATION, DAMAGE TO, OR LOSS OF USE OF THE PRODUCT, OR LOST SALES OR PROFITS OR DELAY OR FAILURE TO PERFORM THIS WARRANTY OBLIGATION. THE REMEDIES PROVIDED HEREIN ARE THE EXCLUSIVE REMEDIES UNDER THIS WARRANTY, WHETHER BASED ON CONTRACT, TORT OR OTHERWISE.

Warranty Registration

What do I need to register my product?

- Contact Information
- Model Number (see example below)
- Proof of Purchase (online confirmation, receipt, gift receipt)
- Date Code (see example below)
- Access Code (see example below)



NOTE: Label depicted here is an example.

Please see label on your product for actual model/date code/access code.

How do I register my product?

All you need to do is fill out a simple Chefman® registration form. You can easily access the form in one of the two ways listed below:

- Visit Chefman.com/register.
- Scan the QR code to the right to access site.





Ice Maker & Water Dispenser

RJ56DISUG091724

Iceman® designed by ©Chefman 2024.

Chefman® is a registered trademark of RJ Brands, LLC.

Iceman® is a registered trademark of RJ Brands, LLC.