

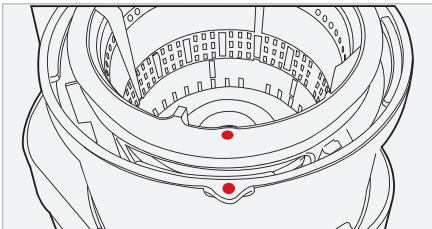
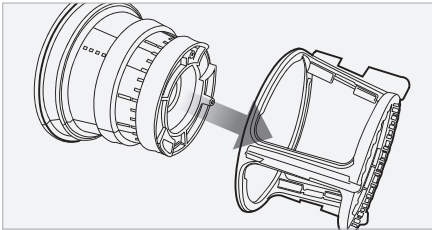
# HOW TO ASSEMBLE

## STEP 1 Drum Set Assembly

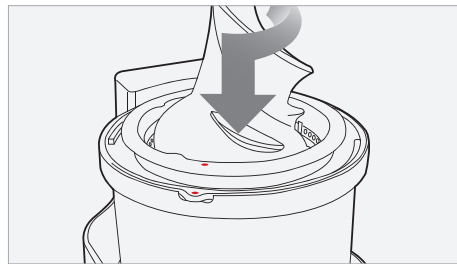
### Check Before Operating

- Wash the parts before first use.
- Ensure that scrapers of rotation wiper and silicone ring of strainer are assembled properly.

- 1** Assemble the strainer into the rotation wiper then place this assembly in to the juicing bowl ensuring the red dot ● on the strainer is aligned with the red dot ● on the juicing bowl.

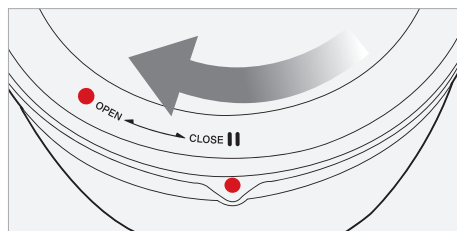
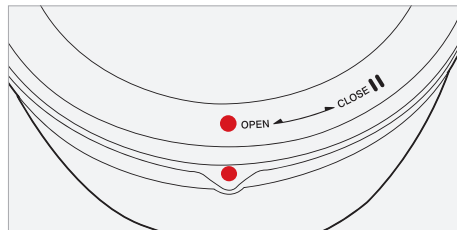


- 2** Place the juicing screw into the strainer. Turn and press down on it until it clicks into place.



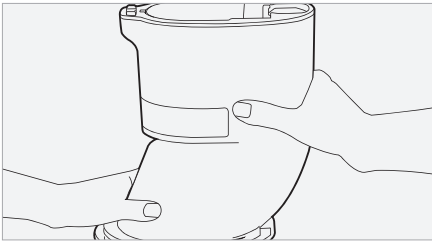
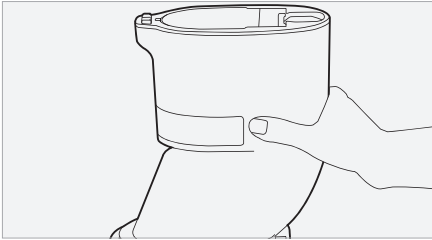
**Note** | The juicing screw needs to be locked in place in order to close the drum lid.

- 3** Place the drum lid onto the juicing bowl aligning the red dot ● on the drum lid with the red dot ● on the juicing bowl. Turn clockwise to close, aligning the red dot ● on the drum lid with the close mark ||.

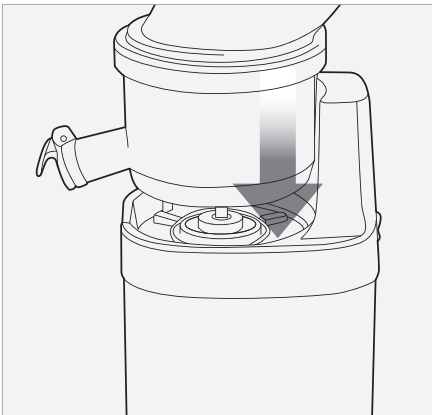


## STEP 2 Drum Set and Body Assembly

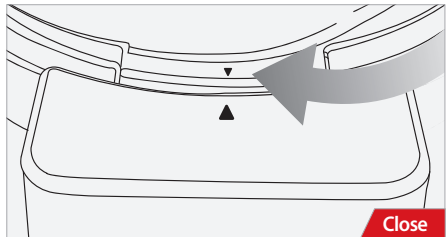
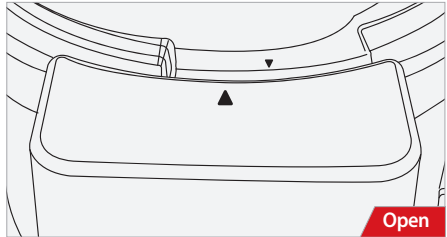
**TIP** For easy assembly hold the drum lid by grabbing the feeding tube and turn clockwise as shown in the illustration.



**4** Place the drum lid on the juicing bowl. Align the down arrow ▼ on the drum lid with the OPEN mark on the body and turn to the ▲CLOSE position.



**5** Open/Close mark on the drum set.



**Note** | The juicer will not operate if the down arrow ▼ on the drum lid is not completely aligned with the ▲CLOSE mark on the body.

**6** Place the pulp cup under the pulp spout and place the juice cup under the juice spout as shown in the illustration.

