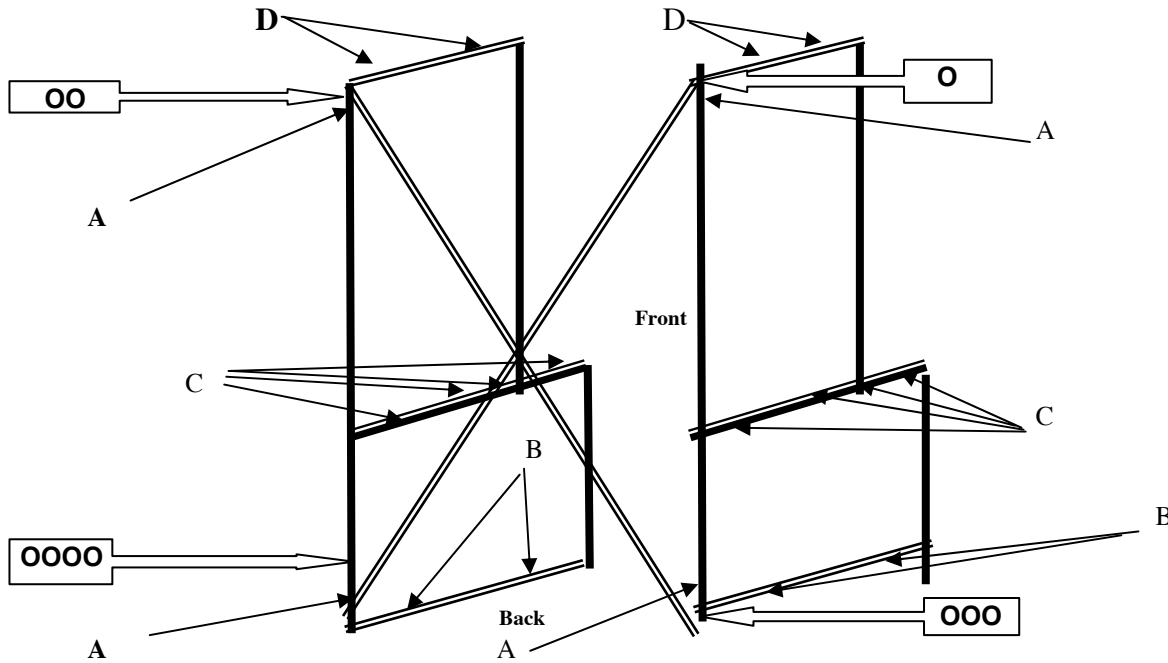


WILLIAMS-SONOMA

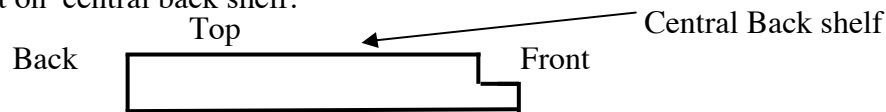
BAKERS RACK ASSEMBLY INSTRUCTIONS

2 persons necessary



- 1° Stand the uprights and the "X" according to the points.
Each "0" mark on the "X" must match with the same "0" mark on the uprights.
- 2° Insert the bolts "A" in the "X" holes and tighten the nuts.
The structure becomes totally stable.
- 3° Put on lower shelf. Insert bolts "B" in the holes and tighten.

- 4° Put on central back shelf.



- 5° Place the supports on each upright (Fit them to the end).
 - 6° Put on the three upper part shelves.
 - 7° Put on the front part of central shelf and fit in the junction.
 - 8° Screw the two elements of the central shelf in the pre-drilled holes, using the "C" bolts.
- Put on the cornice. Attach it with the "D" bolts and washers.
- 9° Put on bookends.

MAINTENANCE

Apply with a brush a little bit of "rustic dark" wax
Let it dry and make it shine slowly.